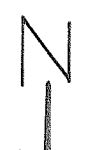


PART OF ASSESSORS PLAT NO. 1 AMENDED

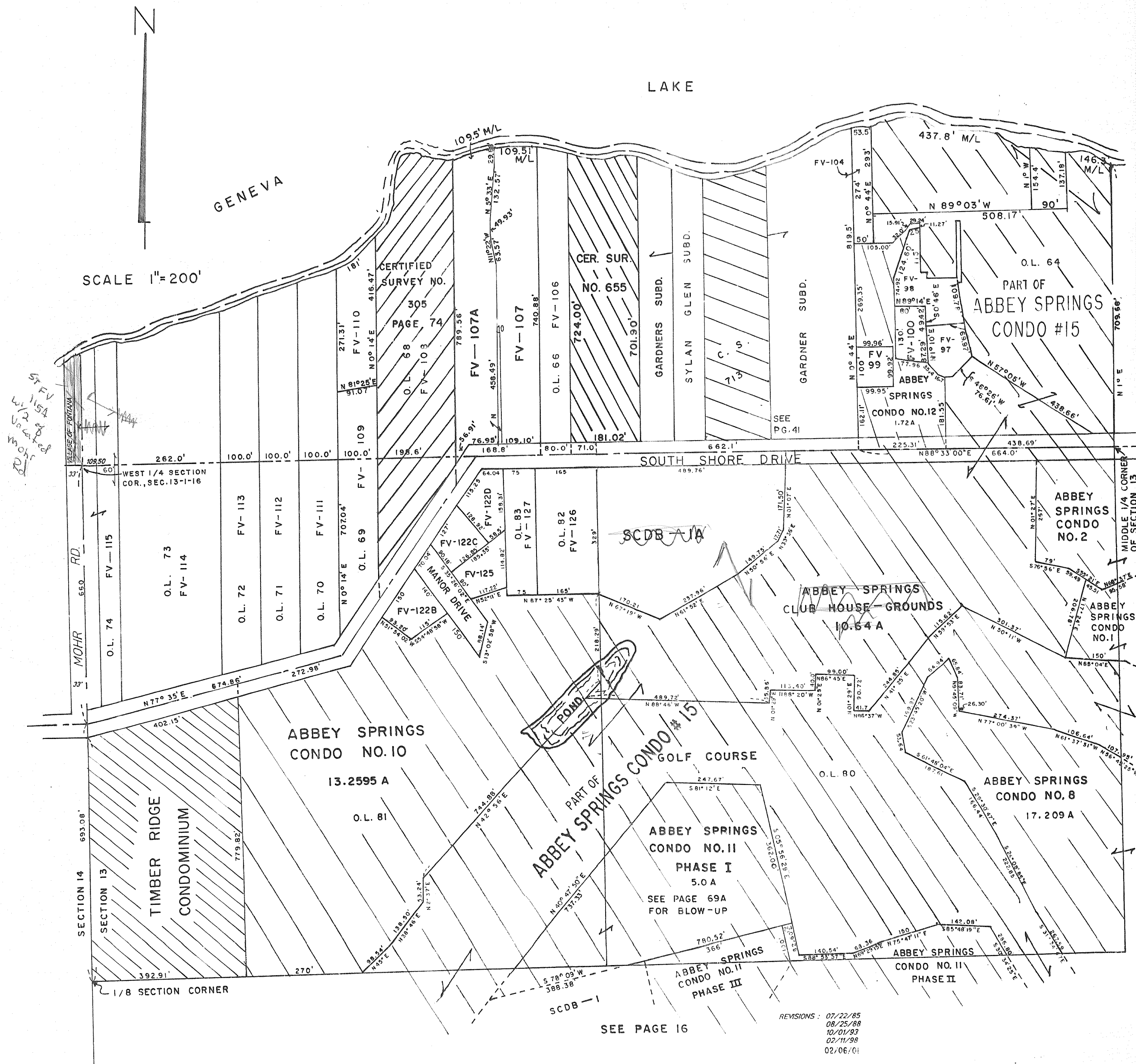
VILLAGE OF FONTANA
OUTLOTS 64 TO 74 & 80 TO 83 INCL.
SEC. 13 - TIN - RIGE



SCALE 1"=200'

GENEVA

LAKE



ST FV
1154
w/2 of
vacated
Mohr
RD.

MIDDLE 1/4 CORNER
OF SECTION 13

REVISIONS : 07/22/85
08/25/88
10/01/93
02/11/98
02/06/01

SEE PAGE 16