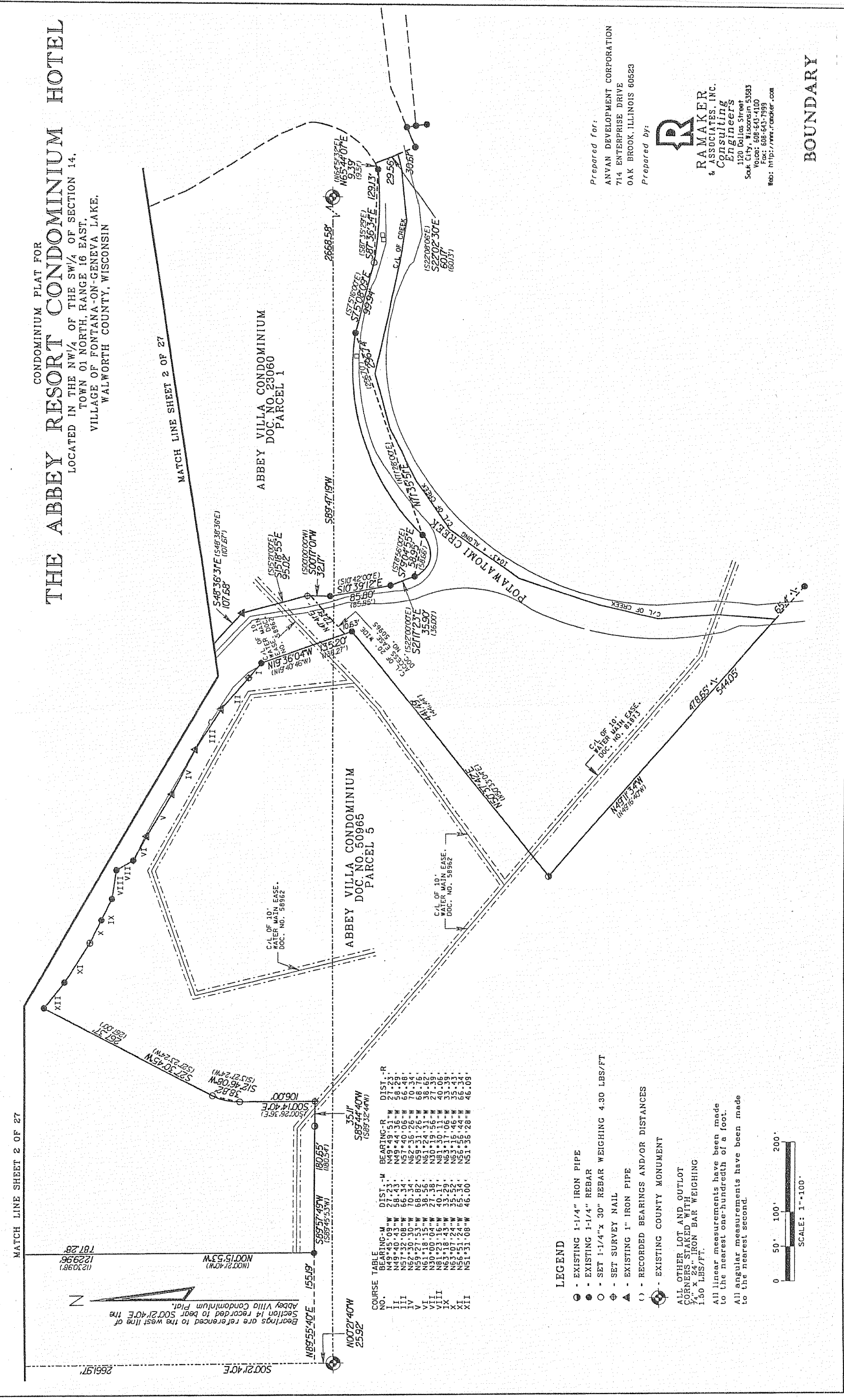
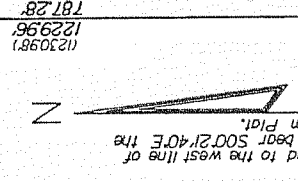


**THE ABBEY RESORT CONDOMINIUM HOTEL**  
 CONDOMINIUM PLAT FOR  
 LOCATED IN THE NW/4 OF THE SW/4 OF SECTION 14,  
 TOWN 01 NORTH, RANGE 16 EAST,  
 VILLAGE OF FONTANA-ON-GENEVA LAKE,  
 WALWORTH COUNTY, WISCONSIN



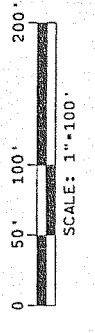
Bearings are referenced to the west line of  
 Section 14 recorded to book 5002140E the  
 Abbey Villa Condominium Plat.




COURSE TABLE

NO.	BEARING	DIST.	BEARING	DIST.
I	N49°41'09"W	21.23	S89°44'40"W	180.95
II	N49°44'35"W	58.43	S89°45'23"W	155.09
III	N52°30'30"W	70.54	S89°44'40"W	180.95
IV	N59°21'53"W	68.82	S89°44'40"W	180.95
V	N61°08'05"W	28.58	S89°44'40"W	180.95
VI	N61°08'05"W	28.58	S89°44'40"W	180.95
VII	N61°08'05"W	28.58	S89°44'40"W	180.95
VIII	N61°08'05"W	28.58	S89°44'40"W	180.95
IX	N61°08'05"W	28.58	S89°44'40"W	180.95
X	N61°08'05"W	28.58	S89°44'40"W	180.95
XI	N61°08'05"W	28.58	S89°44'40"W	180.95
XII	N61°08'05"W	28.58	S89°44'40"W	180.95

- LEGEND**
- - EXISTING 1-1/4" IRON PIPE
  - - EXISTING 1-1/4" REBAR
  - - SET 1-1/4"x 30" REBAR WEIGHING 4.30 LBS/FT
  - ⊕ - SET SURVEY NAIL
  - - EXISTING 1" IRON PIPE
  - - RECORDED BEARINGS AND/OR DISTANCES
  - - EXISTING COUNTY MONUMENT
- ALL OTHER LOT AND OUTLOT  
 CORNERS, STAKED WITH  
 1.50 LBS/FT.
- All linear measurements have been made  
 to the nearest one-hundredth of a foot.
- All angular measurements have been made  
 to the nearest second.



Prepared for:  
 ANYAN DEVELOPMENT CORPORATION  
 714 ENTERPRISE DRIVE  
 OAK BROOK, ILLINOIS 60523

Prepared by:  
  
**RAMAKER & ASSOCIATES, INC.**  
 Consulting Engineers  
 1120 Dallas Street  
 Oak City, Wisconsin 53083  
 Phone: 800.541.7990  
 Fax: 800.541.7992  
 Web: <http://www.ramaker.com>

**BOUNDARY**