

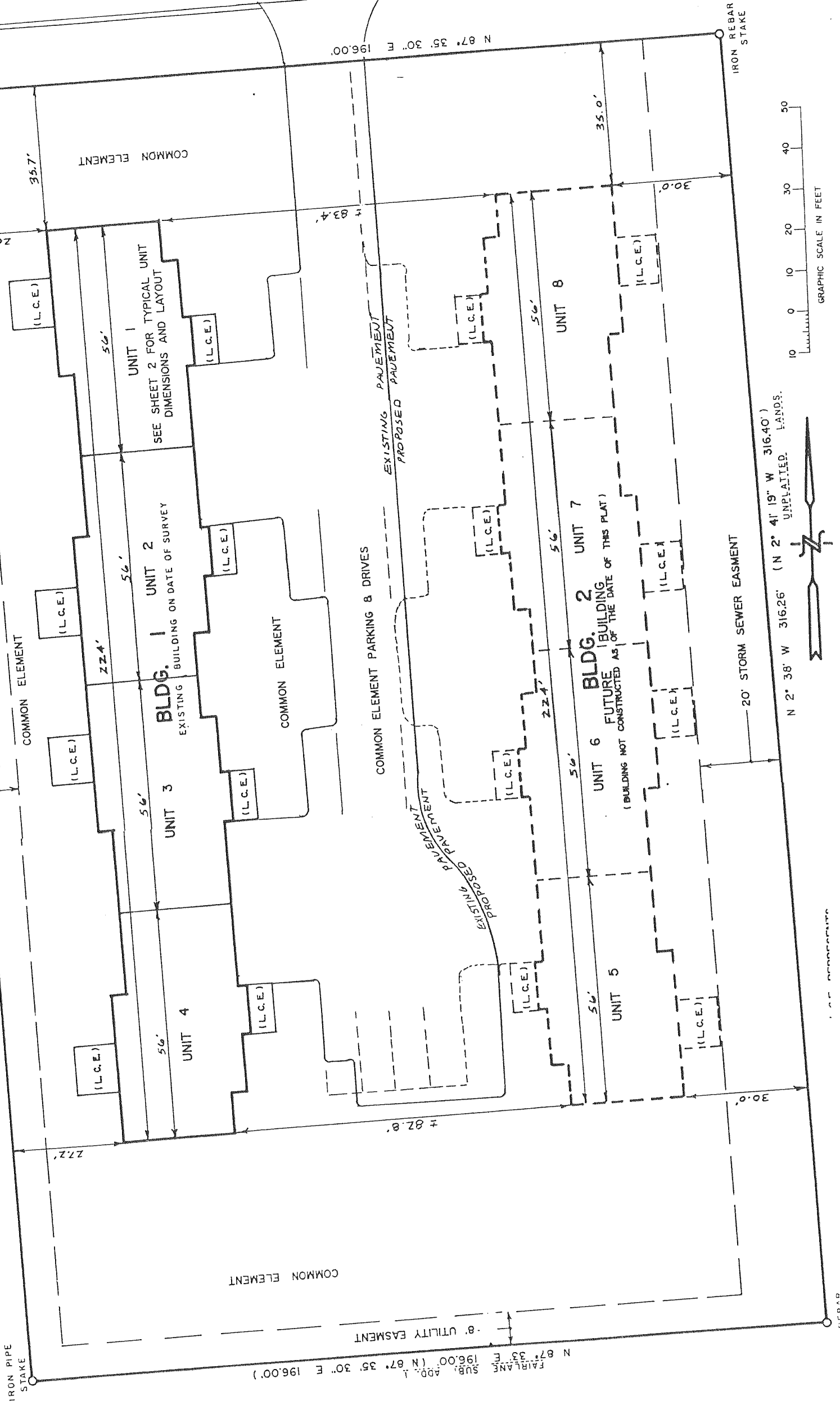
# FIELDCREST CONDOMINIUMS

LOCATED IN THE NW 1/4 OF THE NW 1/4 SECTION 31, T. 3 N. R. 17 E. CITY OF ELKHORN, WALWORTH CO., WI.

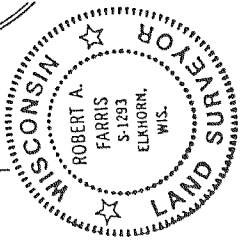
UNPLATTED LANDS

S 2° 38' E 316.40' (S 2° 41' 19" E 316.40')

8' UTILITY EASEMENT



THIRD AVENUE  
PUBLIC STREET (66' R.O.W.)



*Robert A. Farris*  
ROBERT A. FARRIS  
WIS. REGISTERED  
LAND SURVEYOR, S-1293