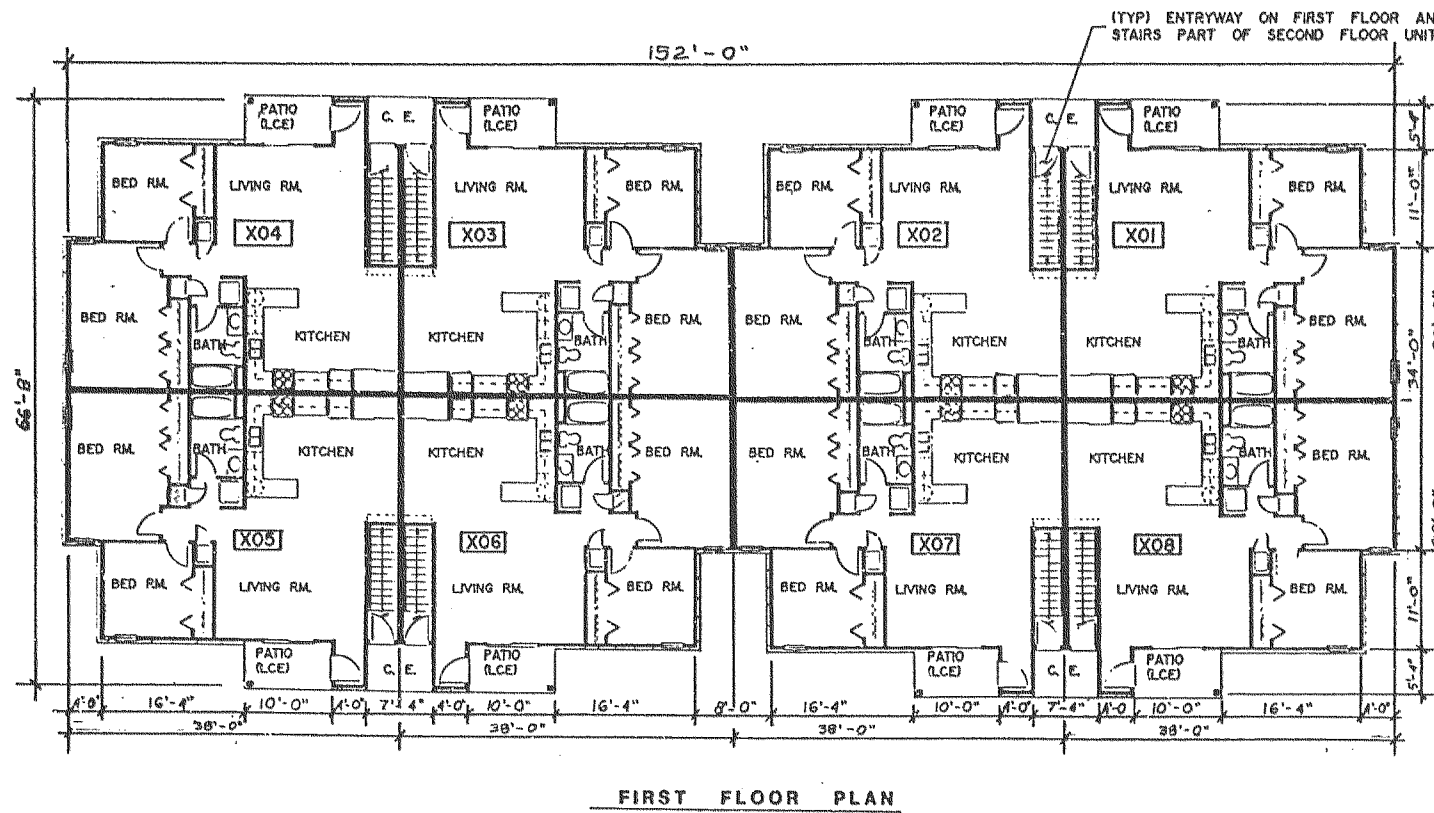


CITY OF ELKHORN

FAIRFIELD HEIGHTS AN APARTMENT CONDOMINIUM DEVELOPMENT

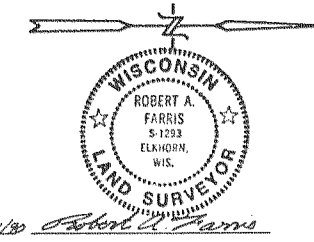
IN THE NW1/4 OF SECTION 31, TOWN 3 NORTH, RANGE 17 EAST, CITY OF ELKHORN, WALWORTH COUNTY, WISCONSIN



FIRST FLOOR PLAN

NOTE: These floorplans have been prepared using information shown on architectural plans for this proposed building and do not represent measurement of the building in place. These drawings represent proposed construction which has not yet begun as of the date of this document. Any existing physical boundaries of any unit or common elements constructed or reconstructed in substantial conformity with the condominium plat shall be conclusively presumed to be its boundaries, regardless of the shifting, settlement or lateral movement of any building and regardless of minor variations between the physical boundaries as described in the declaration or shown on the condominium plat and the actual physical boundaries of any such unit or common element as finally constructed.

- C. E. = COMMON ELEMENT
- LCE = LIMITED COMMON ELEMENT
- X = REPRESENTS UNIT NUMBER FOR INDIVIDUAL UNIT LEGAL DESCRIPTIONS
- X = BUILDING UNIT NUMBER SHOWN ON SHEET 1 OR 2



THIS INSTRUMENT DRAFTED BY
FARRIS HANSEN & ASSOCIATES, INC.
ELKHORN, WISCONSIN

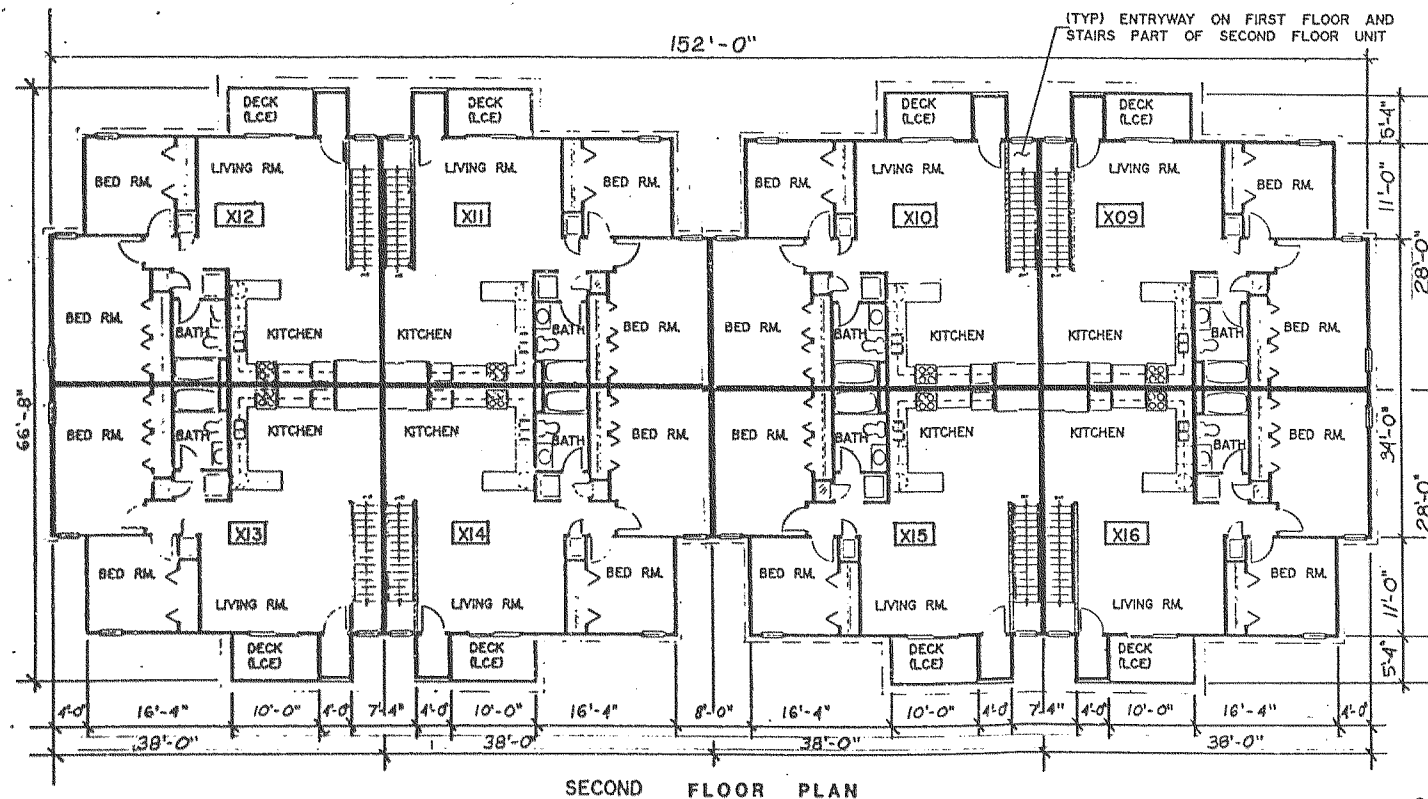
AMENDMENT 1 TO CONDOMINIUM PLAT
EXHIBIT
FIRST FLOOR PLAN - CONDOMINIUM PLAT

PROJ.#3147

SHEET 3 OF 4 SHEETS

FAIRFIELD HEIGHTS AN APARTMENT CONDOMINIUM DEVELOPMENT

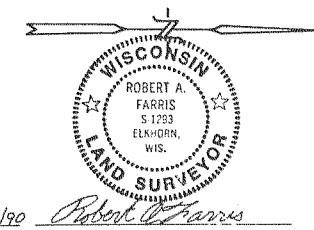
IN THE NW1/4 OF SECTION 31, TOWN 3 NORTH, RANGE 17 EAST, CITY OF ELKHORN, WALWORTH COUNTY, WISCONSIN



SECOND FLOOR PLAN

NOTE: These floorplans have been prepared using information shown on architectural plans for this proposed building and do not represent measurement of the building in place. These drawings represent proposed construction which has not yet begun as of the date of this document. Any existing physical boundaries of any unit or common elements constructed or reconstructed in substantial conformity with the condominium plat shall be conclusively presumed to be its boundaries, regardless of the shifting, settlement or lateral movement of any building and regardless of minor variations between the physical boundaries as described in the declaration or shown on the condominium plat and the actual physical boundaries of any such unit or common element as finally constructed.

- C. E. = COMMON ELEMENT
- LCE = LIMITED COMMON ELEMENT
- X = REPRESENTS UNIT NUMBER FOR INDIVIDUAL UNIT LEGAL DESCRIPTIONS
- X = BUILDING UNIT NUMBER SHOWN ON SHEET 1 OR 2



THIS INSTRUMENT DRAFTED BY
FARRIS HANSEN & ASSOCIATES, INC.
ELKHORN, WISCONSIN

AMENDMENT 1 TO CONDOMINIUM PLAT
EXHIBIT
SECOND FLOOR PLAN - CONDOMINIUM PLAT

PROJ.#3147

SHEET 4 OF 4 SHEETS