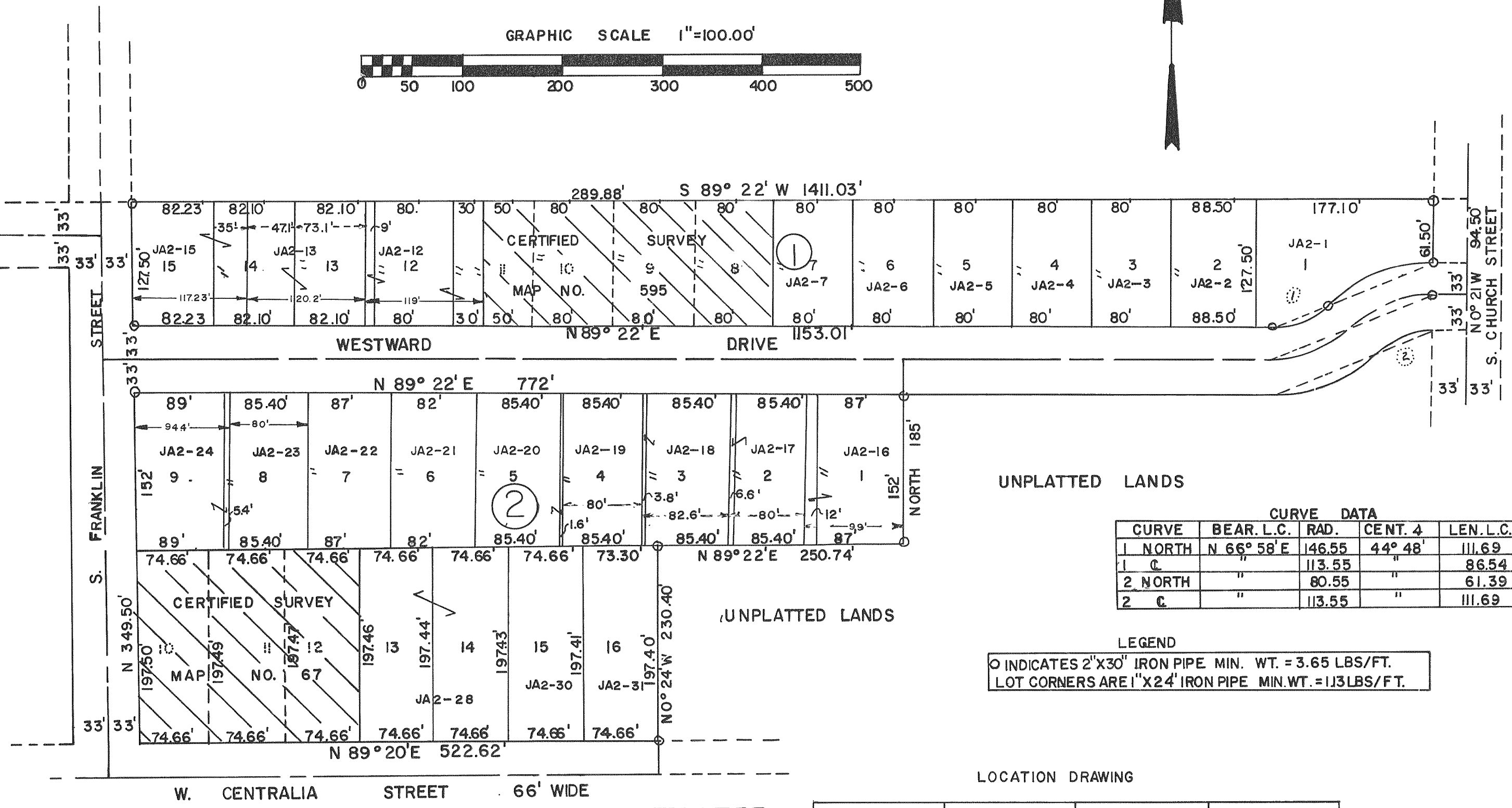
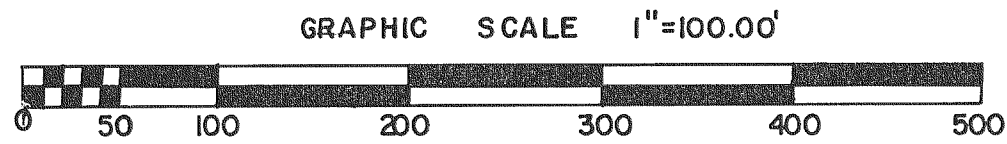


JAMES JONES 2ND ADDITION

LOCATED IN NW1/4, NE1/4 & NE 1/4, NW1/4 SEC. 1, 2-16



CURVE DATA

CURVE	BEAR. L.C.	RAD.	CENT. 4	LEN. L.C.
1 NORTH	N 66° 58' E	146.55	44° 48'	111.69
1 C	"	113.55	"	86.54
2 NORTH	"	80.55	"	61.39
2 C	"	113.55	"	111.69

LEGEND

○ INDICATES 2"X30" IRON PIPE MIN. WT. = 3.65 LBS/FT.
 LOT CORNERS ARE 1"X24" IRON PIPE MIN. WT. = 113 LBS/FT.

FOR REMAINDER OF SUBDIVISION SEE P.39

