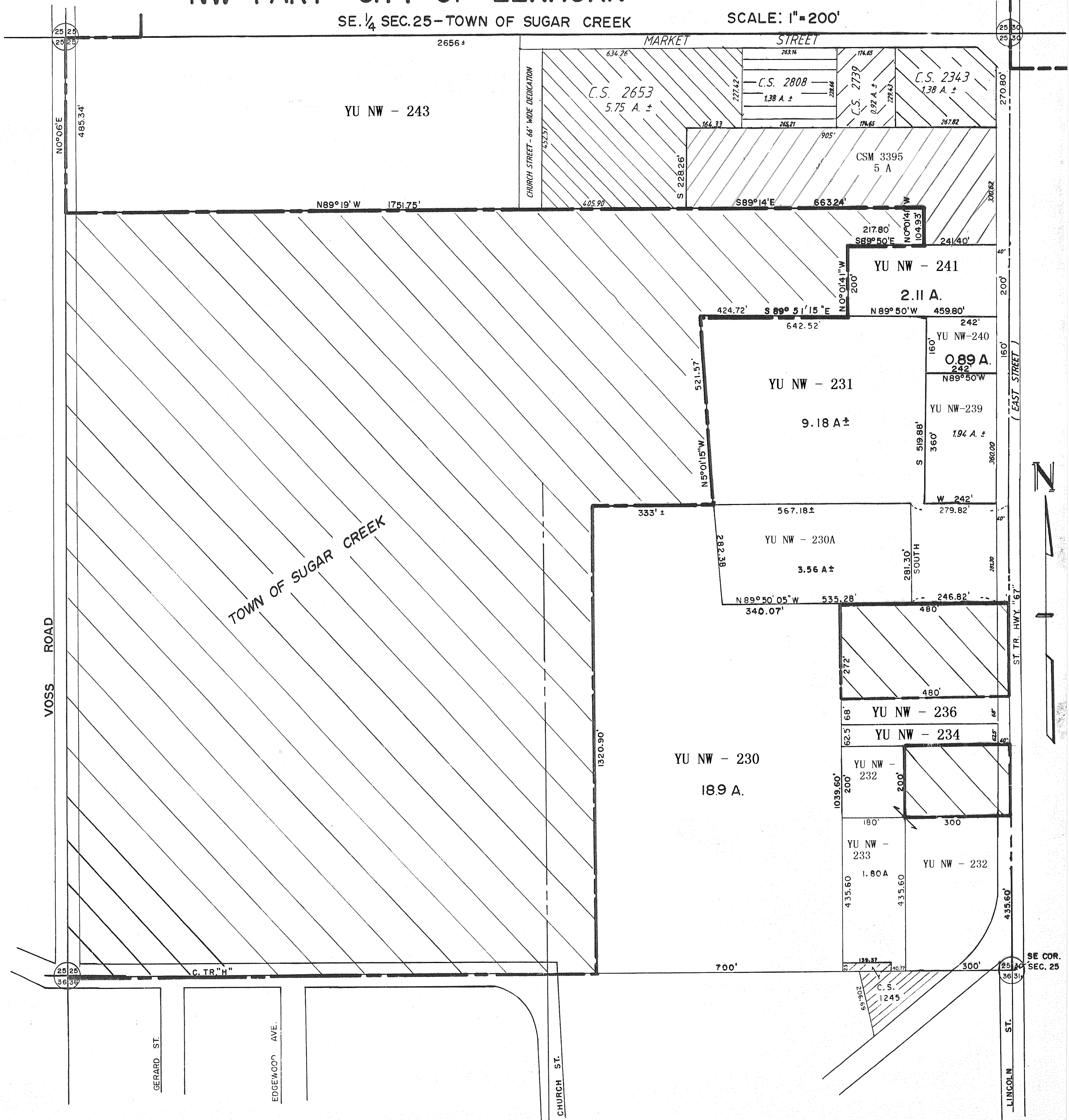


NW-PART-CITY OF ELKHORN

SE. 1/4 SEC. 25 - TOWN OF SUGAR CREEK

SCALE: 1" = 200'

1C



N0°06'E

485.34'

2656 ±

MARKET STREET

CHURCH STREET - 66' WIDE DEDICATION

C.S. 2653
5.75 A. ±

C.S. 2808
1.38 A. ±

C.S. 2343
1.38 A. ±

YU NW - 243

N89°19' W 1751.75'

CSM 3395
5 A

S89°14'E 663.24'

217.80'
S89°50'E

YU NW - 241

2.11 A.

424.72' S89°51'15"E 642.52' N89°50'W 459.80'

YU NW - 231

9.18 A. ±

YU NW-240

0.89 A.

YU NW-239

1.94 A. ±

YU NW - 230A

3.56 A. ±

N89°50'05"W 535.28'

YU NW - 230

18.9 A.

YU NW - 236

YU NW - 234

YU NW - 232

YU NW - 233

1.80 A

YU NW - 232

VOSS ROAD

TOWN OF SUGAR CREEK

GERARD ST.

EDGEWOOD AVE.

CHURCH ST.

LINCOLN ST.

SE COR. SEC. 25

