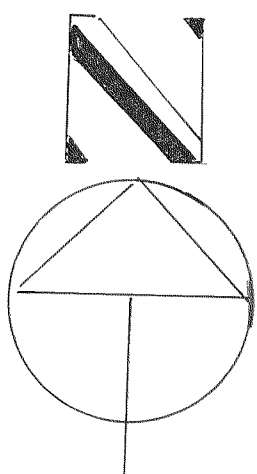


S 89°52'00"E 506.33' NORTH 1/4 CORNER SECTION 36, T3N, R16E. COUNTY TRUNK HIGHWAY "H" (66.00' WIDE) NORTH LINE OF SECTION 36-3-16 NORTHEAST CORNER SECTION 36, T3N, R16E.

EDGEWOOD ESTATES

LOCATED IN THE NW 1/4 OF THE NE 1/4 SECTION 36, T3N, R16E. WALWORTH COUNTY.



SCALE 1" = 40 FT.



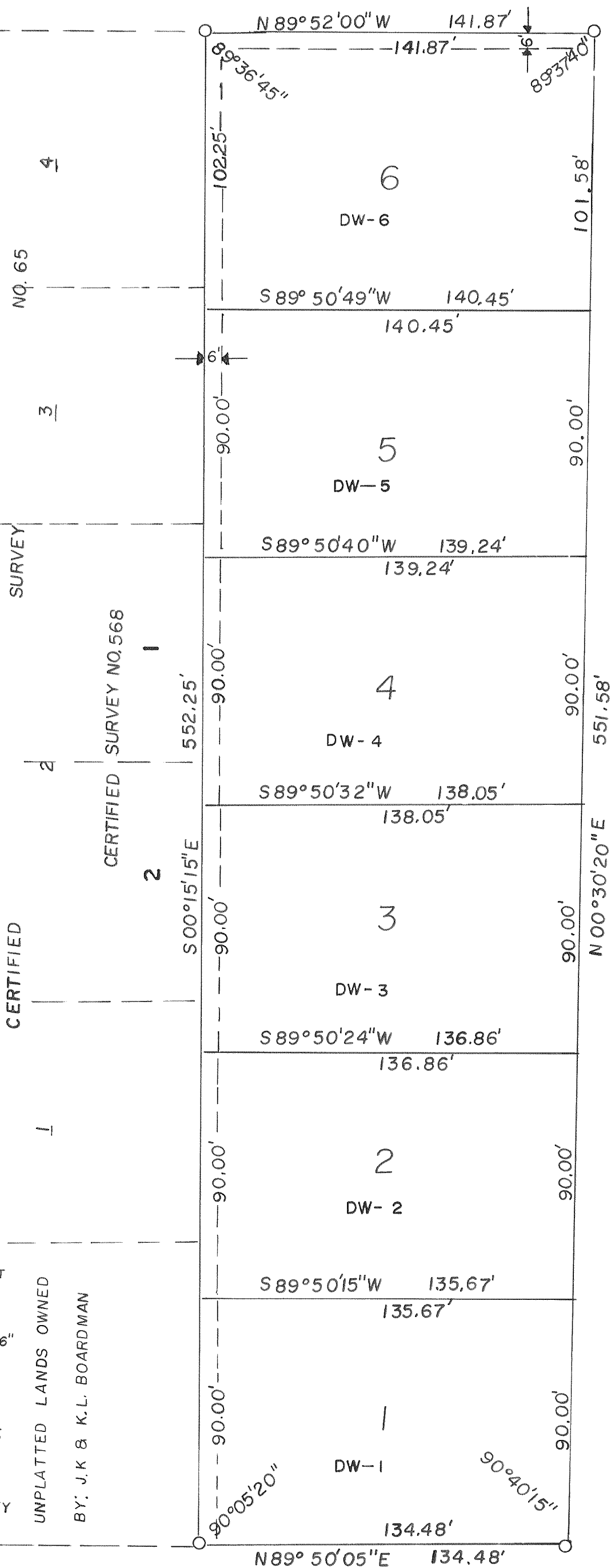
LEGEND

IRON PIPE FOUND 1-1/4 DIA. RESET WITH 2" X 30" IRON PIPE, MINIMUM WEIGHT 3.65 LB./FT.

CONCRETE MONUMENT FOUND, 6" X 6" SPIKE FOUND

NOTE: ALL OTHER LOT CORNERS ARE 1" X 24" IRON PIPES, MINIMUM WEIGHT 1.13 LB/FT.

NOTE: NO VEHICULAR INGRESS OR EGRESS WITH COUNTY TRUNK HWY "H" FROM LOT 6 AS SHOWN ON THIS PLAT.



UNPLATTED LANDS OWNED BY: J.K & K.L. BOARDMAN

EDGEWOOD ESTATES 1ST. ADD.

NO. 524

SURVEY 3

CERTIFIED 2

1

FOURTH AV (66.00' WIDE)

EDGEWOOD AVE. (66.00' WIDE)