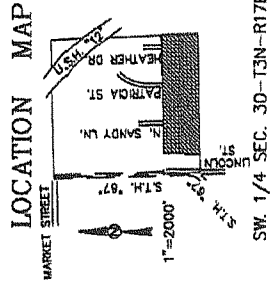


HARVEST POINTE SOUTH

BEING A PART OF THE SE 1/4 AND SW 1/4 OF THE SW 1/4 SECTION 30, T.3N., R.17E., CITY OF ELKHORN, WALWORTH COUNTY, WISCONSIN

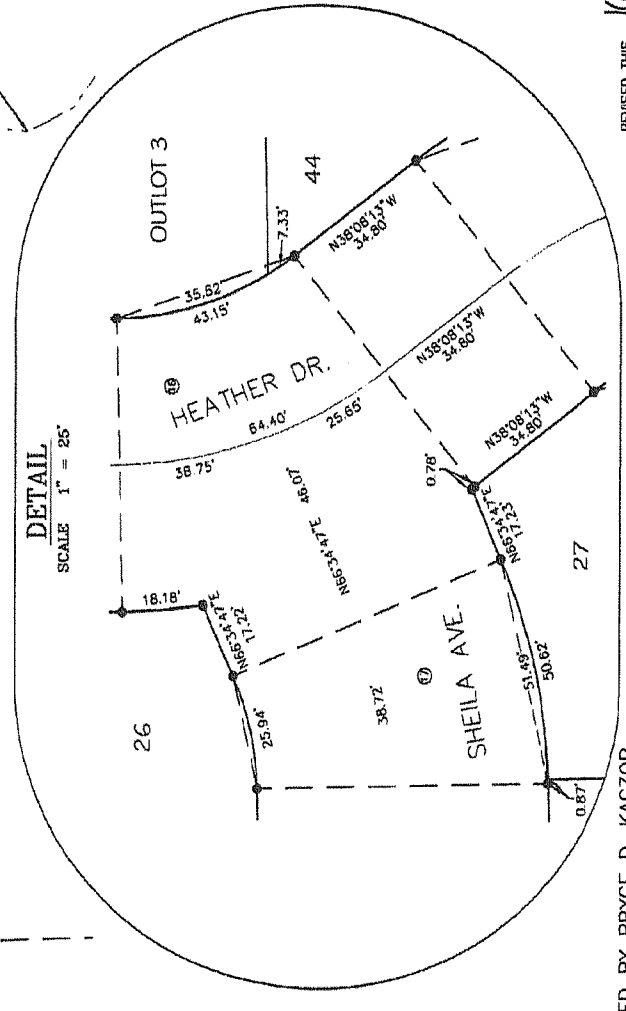
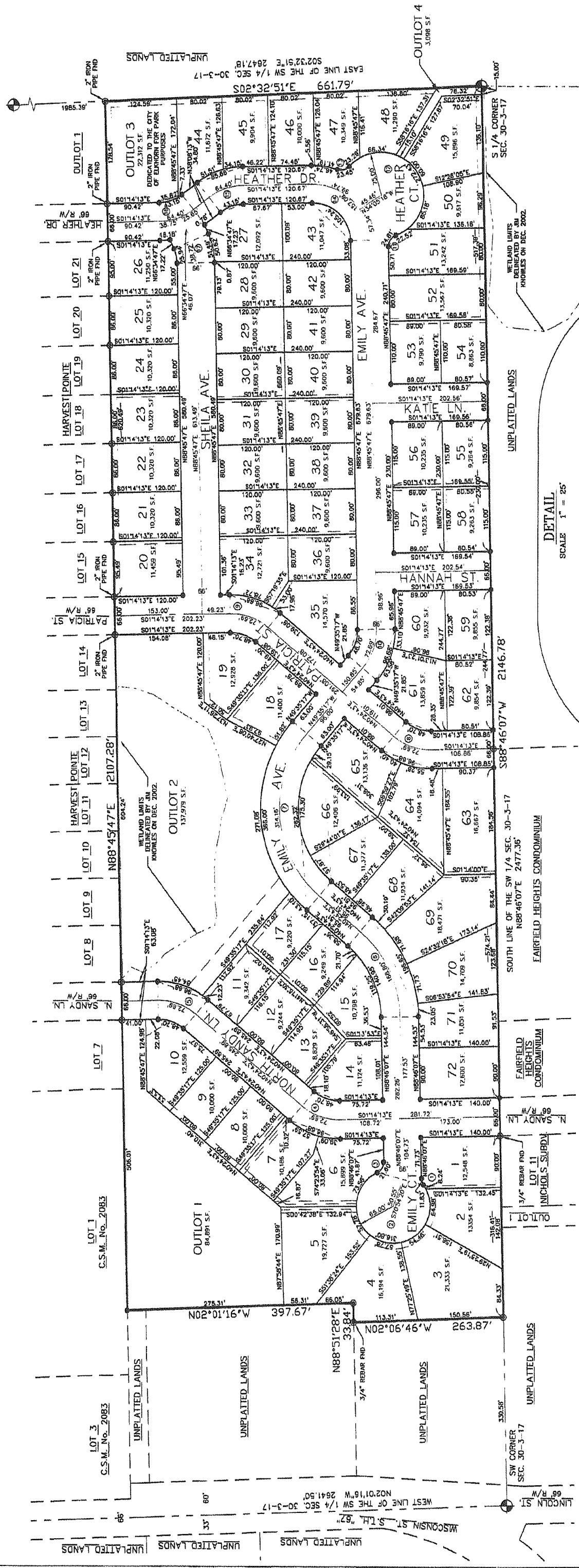
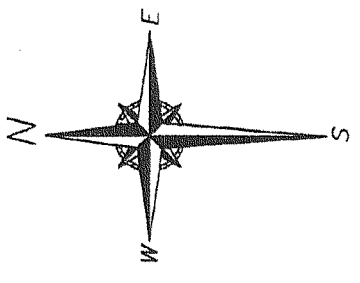


- LEGEND
- 2.375" O.D. IRON PIPE SET, 18" LONG, WT. = 3.65 LBS./LIN. FT.
 - 1.315" X 18" IRON PIPE SET AT ALL OTHER LOT CORNERS. WT. = 1.13 LBS./LIN. FT.
 - ⊕ - CONCRETE MONUMENT W/ BRASS CAP FOUND
 - ⊙ - 1" IRON PIPE FOUND (UNLESS OTHERWISE STATED)

SCALE: 1" = 100'

BEARINGS ARE REFERENCED TO THE WISCONSIN STATE PLANE COORDINATE SYSTEM, SOUTH ZONE (MAD 1927) GRID NORTH ON THE SOUTH LINE OF THE SW 1/4 OF SECTION 30-3-17 AS N88°45'07"E.

DISTANCES ARE COMPUTED TO THE NEAREST 0.01' AND ANGLES ARE COMPUTED TO THE NEAREST 0.01" AND MEASURED TO THE NEAREST 0.000005"

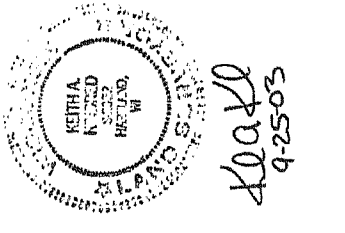


There are no objections to this plat with respect to Secs. 236.15(1), 236.16, 236.20 and 236.21 (1) and (2), Wis. Stats., as amended, or to the plat as drawn or by the County Planning Agency as provided by Sec. 236.12 (6), Wis. Stats.

Certified *March 29, 2004*

Renee M. Pankaj
Department of Administration

- GENERAL NOTES:
- 1) ALL EASEMENTS ARE GRANTED TO THE CITY OF ELKHORN UNLESS OTHERWISE STATED.
 - 2) UTILITY EASEMENTS GRANTED TO THE STATE LONG DISTANCE TELEPHONE COMPANY, ELKHORN LIGHT & WATER AND CHARTER COMMUNICATIONS.
 - 3) OUTLOTS 1, 2, AND 4 ARE TO BE OWNED BY THE HARVEST POINTE SOUTH HOMEOWNERS ASSOCIATION. OUTLOT 3 IS DEDICATED TO THE CITY OF ELKHORN FOR PARK PURPOSES.
 - 4) OUTLOT 1 IS ENCOMPASSED BY A DRAINAGE EASEMENT.



40040
4-25-03

REVISD THIS 16TH DAY OF December, 2003

THIS INSTRUMENT DRAFTED BY BRYCE D. KACZOR

PROJECT #13435

UNPLATTED LANDS

UNPLATTED LANDS

UNPLATTED LANDS

UNPLATTED LANDS

UNPLATTED LANDS

UNPLATTED LANDS

UNPLATTED LANDS

UNPLATTED LANDS

UNPLATTED LANDS

UNPLATTED LANDS

UNPLATTED LANDS

UNPLATTED LANDS

UNPLATTED LANDS