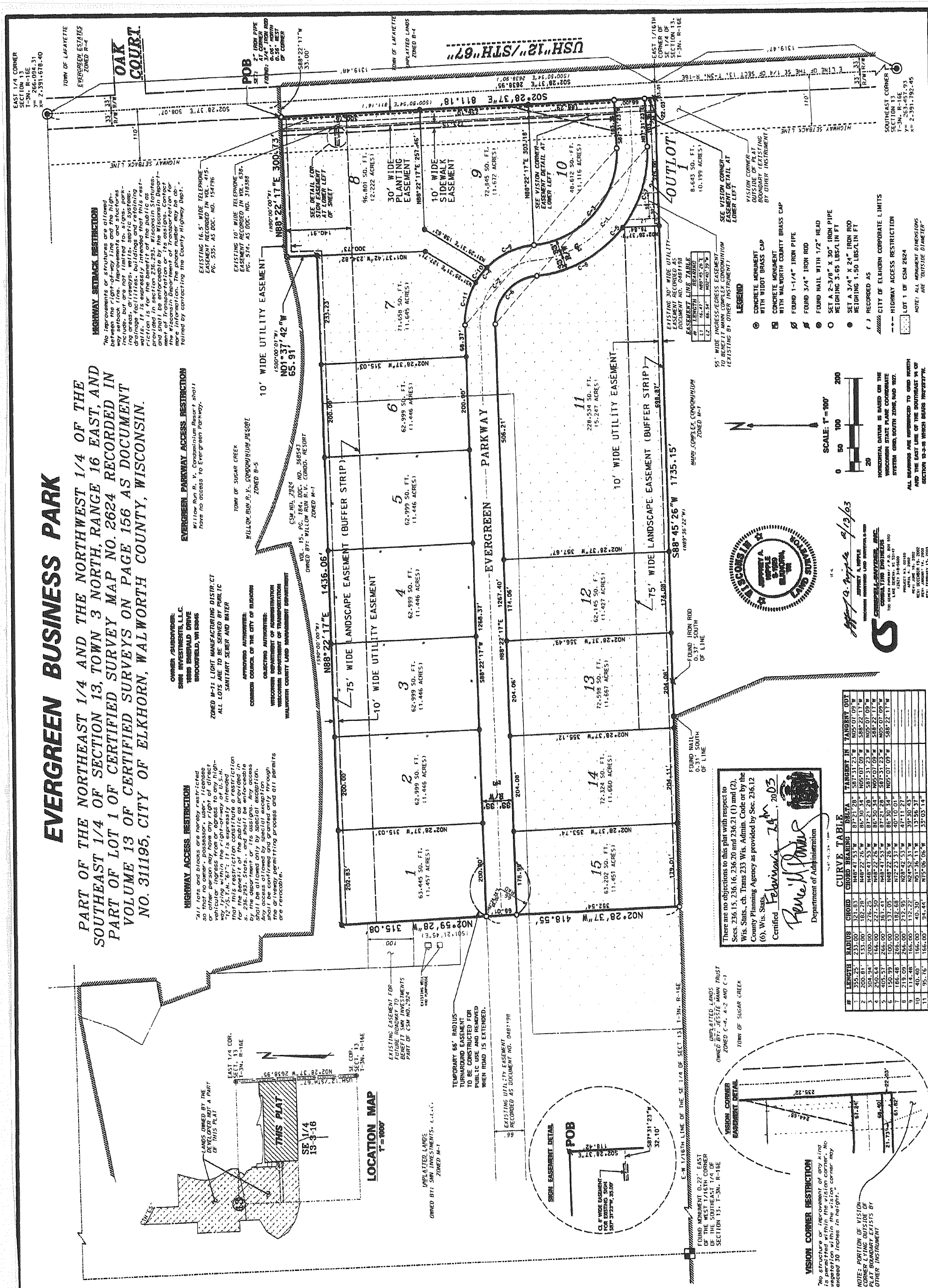


EVERGREEN BUSINESS PARK

PART OF THE NORTHEAST 1/4 AND THE NORTHWEST 1/4 OF THE SOUTHEAST 1/4 OF SECTION 13, TOWN 3 NORTH, RANGE 16 EAST, AND PART OF LOT 1 OF CERTIFIED SURVEY MAP NO. 2624 RECORDED IN VOLUME 13 OF CERTIFIED SURVEYS ON PAGE 156 AS DOCUMENT NO. 311195, CITY OF ELKHORN, WALWORTH COUNTY, WISCONSIN.



HIGHWAY SETBACK RESTRICTION
 The right-of-way structures are allowed between the right-of-way line and the highway setback line. Improvements and structures include, but are not limited to, utility lines, drainage facilities, buildings and retaining walls. It is expressly intended that the public easement shall be enforceable by the Wisconsin Department of Transportation for the purpose of maintaining the highway right-of-way. The phone number for more information is 262-331-1924.

EVERGREEN PARKWAY ACCESS RESTRICTION
 Willow Run R.V. Community Resort shall have no access to Evergreen Parkway.

OWNER (SUBDIVIDER):
 SSM INVESTMENTS, L.L.C.
 2800 EMERALD DRIVE
 BROOKFIELD, WI 53005

ZONED M-1: LIGHT MANUFACTURING DISTRICT
 ALL LOTS ARE TO BE SERVED BY PUBLIC SANITARY SEWER AND WATER

APPROVING AUTHORITY:
 COMMON COUNCIL OF THE CITY OF ELKHORN
 WISCONSIN DEPARTMENT OF TRANSPORTATION
 WALWORTH COUNTY LAND MANAGEMENT DEPARTMENT

HIGHWAY ACCESS RESTRICTION
 All lots and blocks are hereby restricted so that no owner, possessor, user, licensee or other person shall be permitted to cross any highway lying within the right-of-way of U.S.H. 127.571.H. 1977. It is expressly intended that the benefit of the public easement provided in s. 236.293, Stats., and shall be enforceable. Any access allowed by special exception shall be allowed only by special exception. The driveway permitting process and all permits are revocable.

EXISTING EASEMENTS FOR BENEFIT OF SSM INVESTMENTS
 PART OF CSM NO. 2924

TEMPORARY 66' RADIUS TURNAROUND EASEMENT
 TO BE CONSTRUCTED FOR PUBLIC USE AND REMOVED WHEN ROAD IS EXTENDED.

EXISTING UTILITY EASEMENT
 RECORDED AS DOCUMENT NO. 0481198

UNPLATTED LANDS
 OWNED BY JESSIE MANN TRUST
 ZONED C-4, 4-2 AND C-1
 TOWN OF SUGAR CREEK

VISION CORNER EASEMENT DETAIL

VISION CORNER RESTRICTION
 No structure or sign shall be erected or placed within the vision corner. No vegetation within the vision corner may exceed 30 inches in height.

NOTES: PORTION OF VISION CORNER LYING OUTSIDE OF SECTION 13, T-3N, R-16E, OTHER INSTRUMENT

LEGEND

CONCRETE MONUMENT WITH WIDOT BRASS CAP

CONCRETE MONUMENT WITH WALWORTH COUNTY BRASS CAP

FOUND 1-1/4" IRON PIPE

FOUND 3/4" IRON ROD

FOUND NAIL WITH 1/2" HEAD

SET A 2-3/8" X 30" IRON PIPE WEIGHING 3.65 LBS/LIN FT

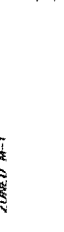
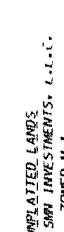
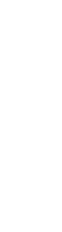
SET A 3/4" X 24" IRON ROD WEIGHING 1.50 LBS/LIN FT

RECORDED AS

BOUNDARY OF ELKHORN CORPORATE LIMITS

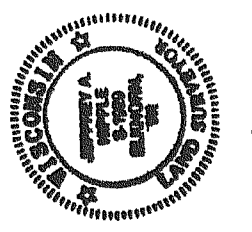
LOT 1 OF CSM 2624

NOTE: ALL MONUMENT DIMENSIONS ARE OUTSIDE DIAMETER



#	LENGTH	RADIUS	CHORD BEARING	DELTA	TANGENT IN	TANGENT OUT
1	355.25	233.00	S88°45'26"W	87°21'20"	S88°45'26"W	S88°45'26"W
2	300.00	200.00	S88°45'26"W	87°21'20"	S88°45'26"W	S88°45'26"W
3	300.00	200.00	S88°45'26"W	87°21'20"	S88°45'26"W	S88°45'26"W
4	230.64	166.00	S88°45'26"W	87°21'20"	S88°45'26"W	S88°45'26"W
5	605.37	266.00	S88°45'26"W	87°21'20"	S88°45'26"W	S88°45'26"W
6	150.99	100.00	S88°45'26"W	87°21'20"	S88°45'26"W	S88°45'26"W
7	114.89	66.00	S88°45'26"W	87°21'20"	S88°45'26"W	S88°45'26"W
8	114.89	66.00	S88°45'26"W	87°21'20"	S88°45'26"W	S88°45'26"W
9	40.40	166.00	S88°45'26"W	87°21'20"	S88°45'26"W	S88°45'26"W
10	40.40	166.00	S88°45'26"W	87°21'20"	S88°45'26"W	S88°45'26"W
11	95.76	166.00	S88°45'26"W	87°21'20"	S88°45'26"W	S88°45'26"W

There are no objections to this plan with respect to Secs. 236.15, 236.16, 236.20 and 236.21 (1) and (2), Wis. Stats., ch. Trans 233 Wis. Admin. Code or by the County Planning Agency as provided by Sec. 236.12 (6), Wis. Stats.
 Certified February 14, 2005
 Department of Administration



James A. Pfeiffer
 February 14, 2005

#	LENGTH	RADIUS	CHORD BEARING	DELTA	TANGENT IN	TANGENT OUT
1	355.25	233.00	S88°45'26"W	87°21'20"	S88°45'26"W	S88°45'26"W
2	300.00	200.00	S88°45'26"W	87°21'20"	S88°45'26"W	S88°45'26"W
3	300.00	200.00	S88°45'26"W	87°21'20"	S88°45'26"W	S88°45'26"W
4	230.64	166.00	S88°45'26"W	87°21'20"	S88°45'26"W	S88°45'26"W
5	605.37	266.00	S88°45'26"W	87°21'20"	S88°45'26"W	S88°45'26"W
6	150.99	100.00	S88°45'26"W	87°21'20"	S88°45'26"W	S88°45'26"W
7	114.89	66.00	S88°45'26"W	87°21'20"	S88°45'26"W	S88°45'26"W
8	114.89	66.00	S88°45'26"W	87°21'20"	S88°45'26"W	S88°45'26"W
9	40.40	166.00	S88°45'26"W	87°21'20"	S88°45'26"W	S88°45'26"W
10	40.40	166.00	S88°45'26"W	87°21'20"	S88°45'26"W	S88°45'26"W
11	95.76	166.00	S88°45'26"W	87°21'20"	S88°45'26"W	S88°45'26"W

Scale: 1" = 100'
 North Arrow
 City of Elkhorn, Wisconsin
 City Engineer: James A. Pfeiffer
 License No. 12873
 Date: February 14, 2005