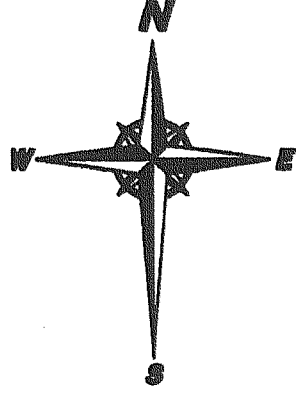
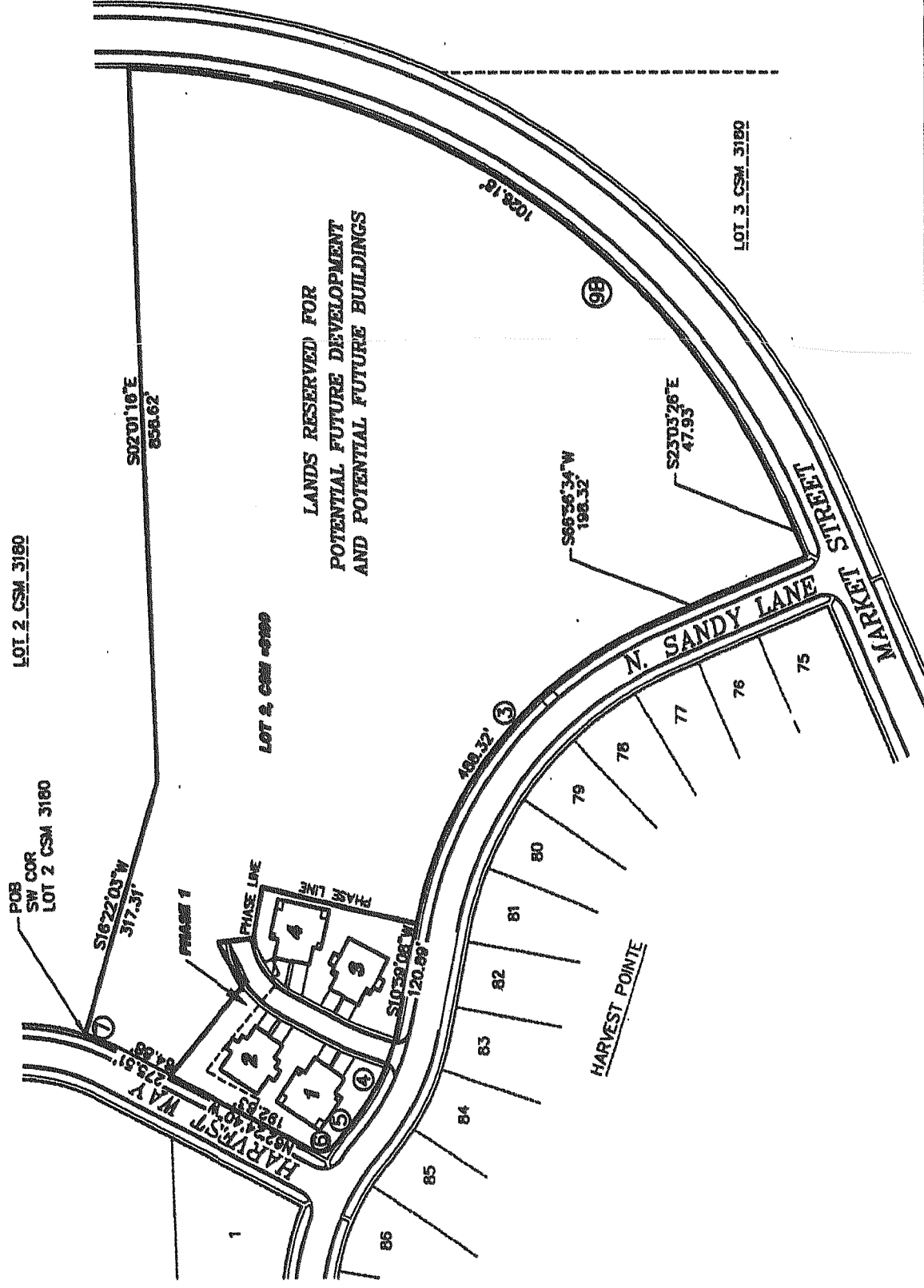


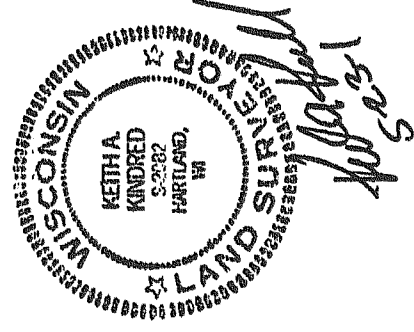
**CONDOMINIUM PLAT OF  
HARVEST POINTE CONDOMINIUMS**

BEING ALL OF LOT 2 OF CSM #3180, AND LOCATED IN THE NW 1/4, SW 1/4 OF THE SW 1/4 OF SECTION 30, T.3N., R.17E., CITY OF ELKHORN, WALWORTH COUNTY, WISCONSIN.

SURVEY BY  
KEITH A. KINDRED, RLS 2082  
WELCH, HANSON AND ASSOC., INC.  
355 AUSTIN CIRCLE, SUITE 100  
DELAFIELD, WISCONSIN. 53018  
(414) 846-6855



SCALE: 1" = 150'



CURVE	RADIUS	LENGTH	CHORD	BEARING	DELTA
9B	895.00'	1026.18'	970.89'	S55°54'14\"E	65°41'37\"
3	500.00'	488.32'	469.14'	S38°57'51\"W	55°57'26\"
4	267.00'	140.57'	138.95'	S26°04'06\"W	30°19'56\"
5	353.00'	24.63'	24.62'	S99°01'56.5\"W	04°14'15\"
6	25.00'	35.20'	32.36'	N77°15'04.5\"E	80°40'31\"
7A	283.00'	48.83'	48.77'	S67°21'15\"E	09°53'10\"

THIS INSTRUMENT DRAFTED BY KEITH A. KINDRED