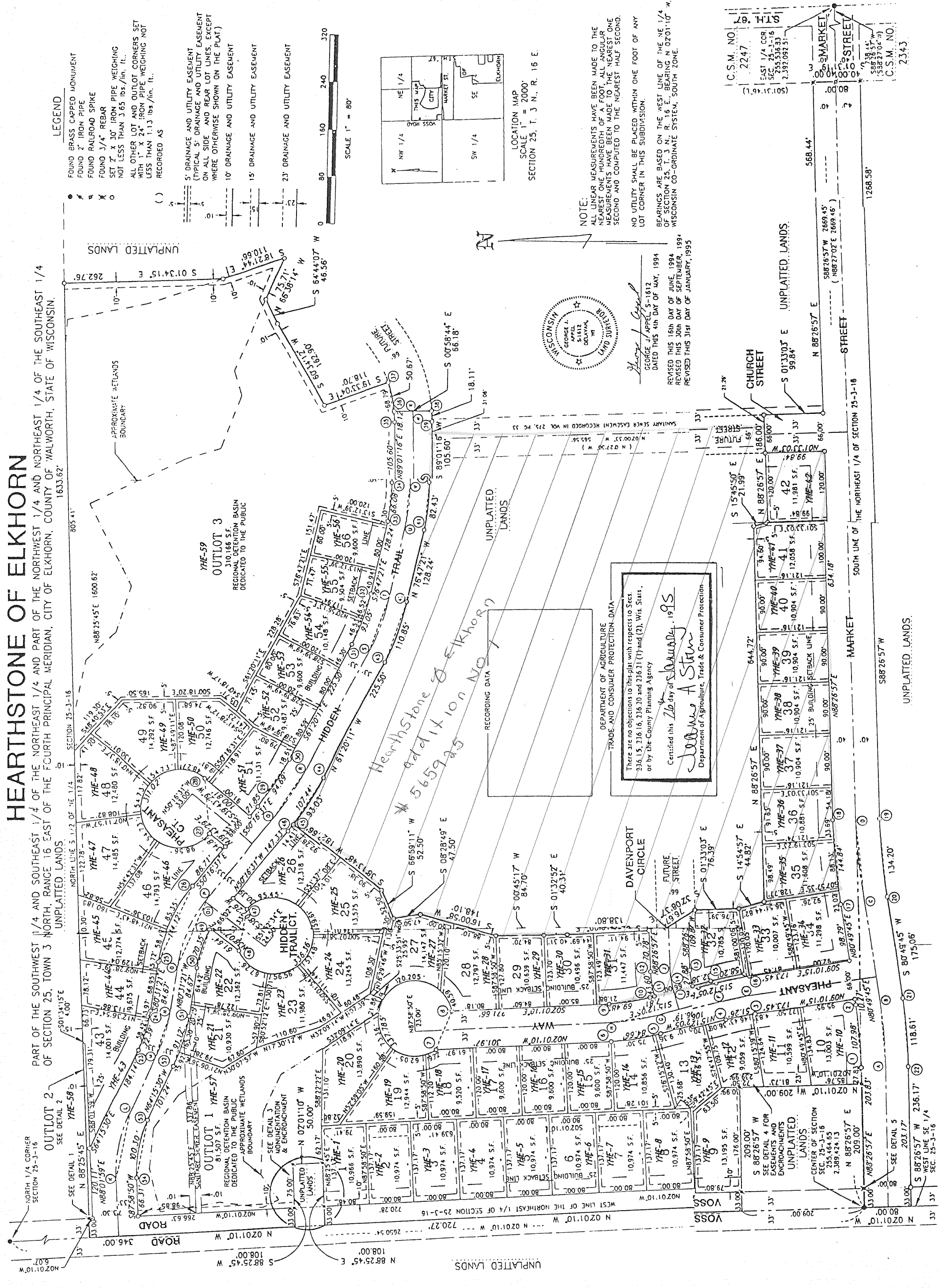


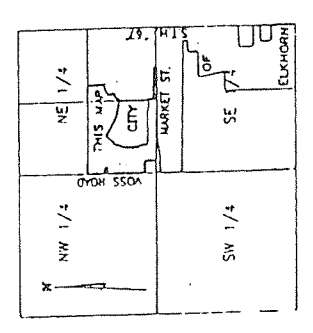
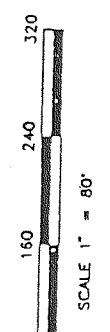
HEARTHSTONE OF ELKHORN

PART OF THE SOUTHWEST 1/4 AND SOUTHEAST 1/4 OF THE NORTHWEST 1/4 AND NORTHEAST 1/4 OF THE SOUTHWEST 1/4 OF SECTION 25, TOWN 3 NORTH, RANGE 16 EAST OF THE FOURTH PRINCIPAL MERIDIAN, CITY OF ELKHORN, COUNTY OF WALWORTH, STATE OF WISCONSIN. 1633.62'

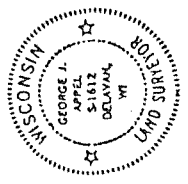


LEGEND

- FOUND BRASS CAPPED MONUMENT
- FOUND IRON PIPE
- FOUND RAILROAD SPIKE
- FOUND 3/4" REBAR
- SET 2" X 30" IRON PIPE WEIGHING NOT LESS THAN 3.65 LBS./LIN. FT.
- ALL OTHER LOT AND OUTLOT CORNERS SET WITH 1" X 24" IRON PIPE WEIGHING NOT LESS THAN 1.13 LBS./LIN. FT.
- RECORDED AS
- 5' DRAINAGE AND UTILITY EASEMENT (TYPICAL 5' DRAINAGE AND UTILITY EASEMENT ON ALL SIDES AND REAR LOT LINES, EXCEPT WHERE OTHERWISE SHOWN ON THE PLAT)
- 10' DRAINAGE AND UTILITY EASEMENT
- 15' DRAINAGE AND UTILITY EASEMENT
- 20' DRAINAGE AND UTILITY EASEMENT



NOTE:
ALL LINEAR MEASUREMENTS HAVE BEEN MADE TO THE NEAREST ONE HUNDREDTH OF A FOOT, ALL ANGULAR MEASUREMENTS HAVE BEEN MADE TO THE NEAREST ONE SECOND AND COMPUTED TO THE NEAREST HALF SECOND.
NO UTILITY SHALL BE PLACED WITHIN ONE FOOT OF ANY LOT CORNER IN THIS SUBDIVISION.
BEARINGS ARE BASED ON THE WEST LINE OF THE NE 1/4 OF SECTION 25, T. 3 N., R. 16 E., BEARING N 92°01'10" W. WISCONSIN CO-ORDINATE SYSTEM, SOUTH ZONE.



George J. Appel
GEORGE J. APPEL, S-1612
DATED THIS 4th DAY OF MAY, 1994
REVISED THIS 16th DAY OF JUNE, 1994
REVISED THIS 30th DAY OF SEPTEMBER, 1994
REVISED THIS 31st DAY OF JANUARY, 1995

DEPARTMENT OF AGRICULTURE
TRADE AND CONSUMER PROTECTION DATA
There are no objections to this plat with respect to Sects. 236.15, 236.16, 236.20 and 236.31 (1) and (2), Wis. Stats., or by the County Planning Agency
Certified this 26th day of September, 1995
Joanne A. Stum
Department of Agriculture, Trade & Consumer Protection

REVISIONS :