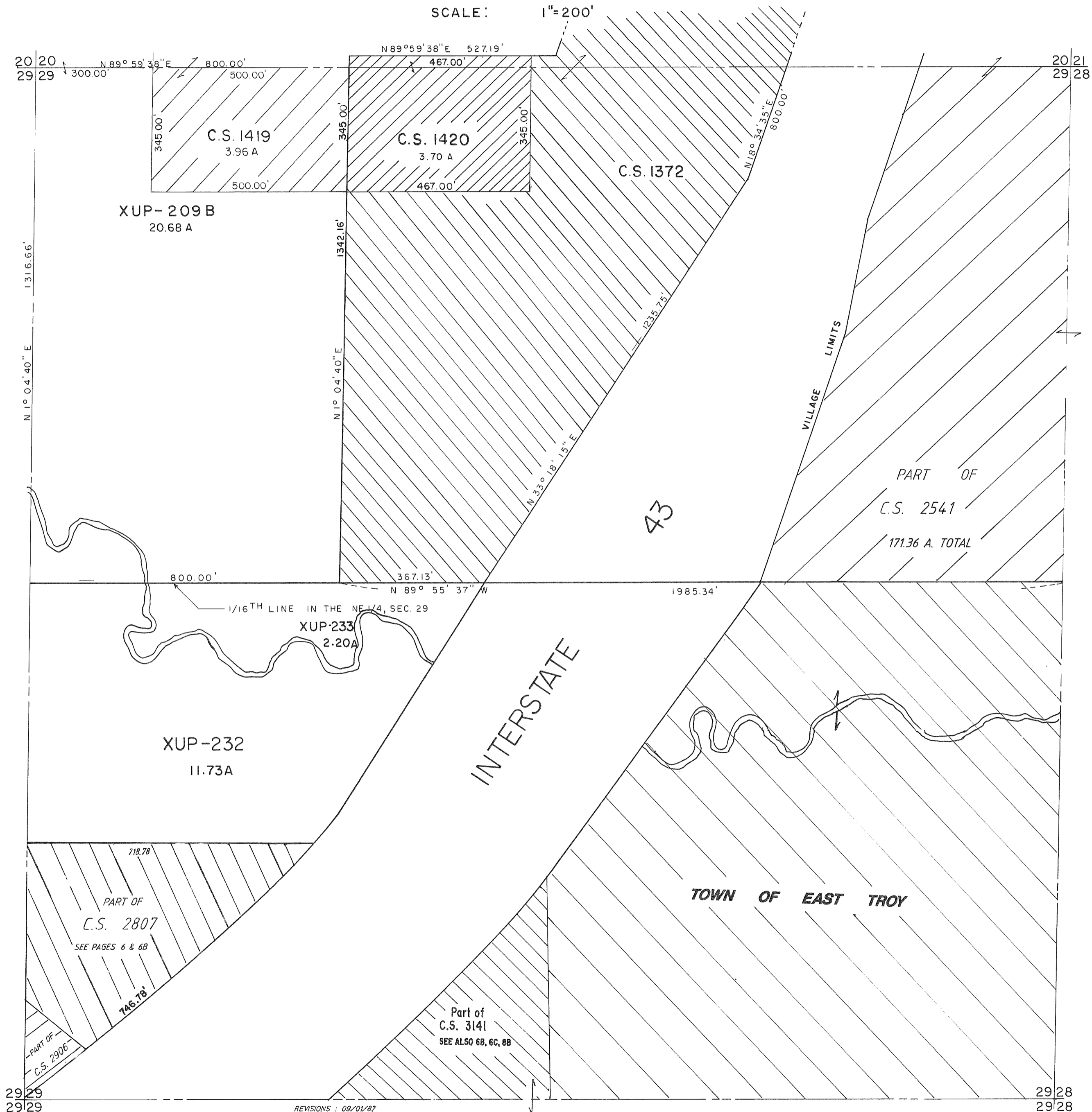


VILLAGE OF EAST TROY

N.E. 1/4 SECTION 29, T4N-R18E

SCALE: 1"=200'



REVISIONS :

- 09/01/87
- 01/03/89
- 07/08/94
- 12/27/94
- 05/18/95
- 01/24/97
- 10/07/97
- 07/20/98
- 12/14/99

29 29
29 29

29 28
29 28