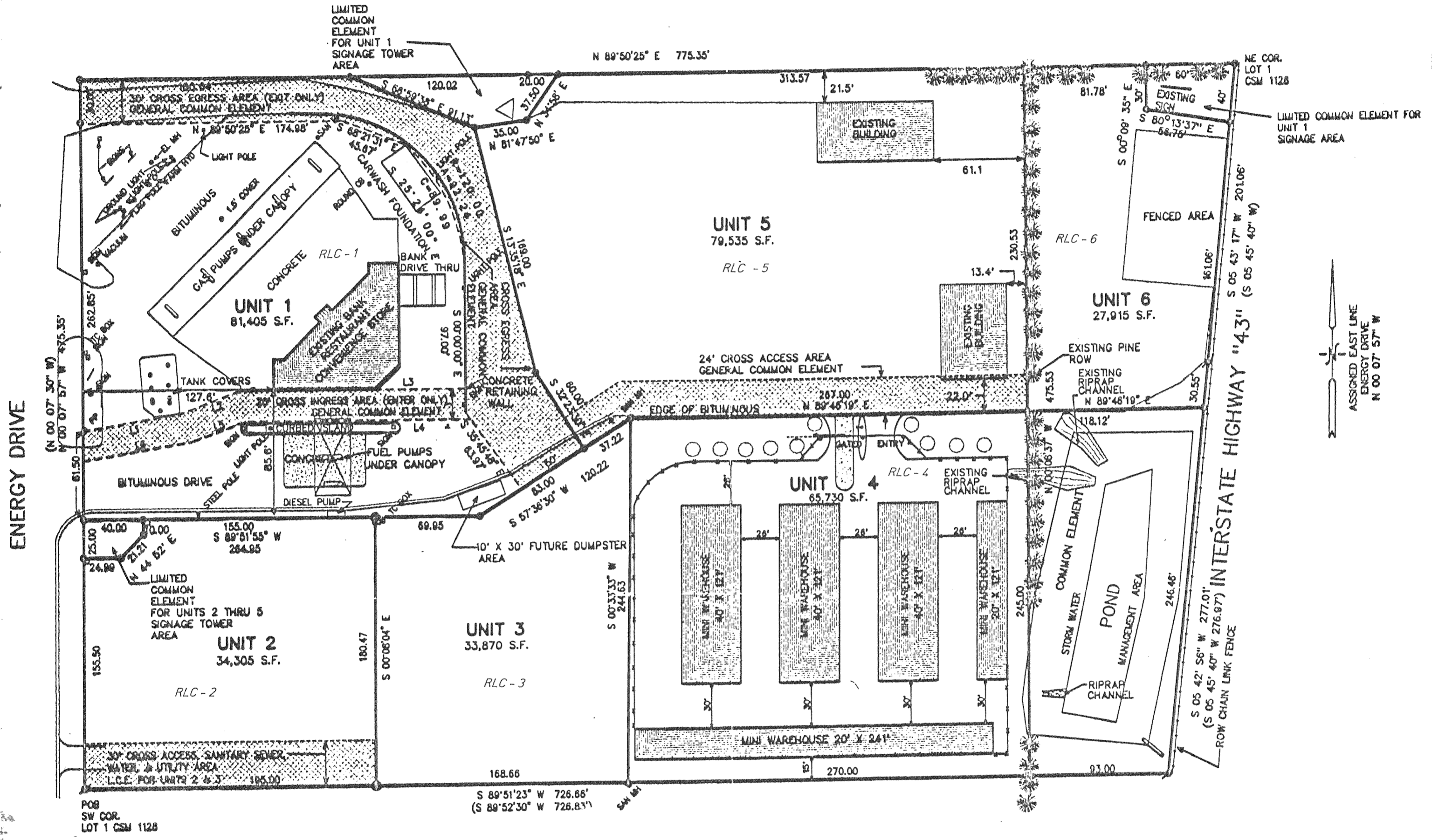


LINE	BEARING	DISTANCE
L1	N 80°20'08" E	68.60
L2	N 69°38'50" E	40.00
L3	N 89°55'43" E	150.43
L4	S 80°55'43" W	150.49
L5	S 69°38'50" W	38.29
L6	S 80°20'08" W	73.83

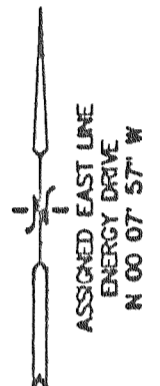
# LAKE COUNTRY CONDOMINIUM

PART OF THE SE 1/4 OF SECTION 20, TOWN 4 NORTH, RANGE 18 EAST  
VILLAGE OF EAST TROY, WALWORTH COUNTY, WISCONSIN



ENERGY DRIVE

NE COR. LOT 1 CSM 1128



LIMITED COMMON ELEMENT FOR UNIT 1 SIGNAGE AREA

FENCED AREA

**UNIT 5**  
79,535 S.F.  
RLC - 5

**UNIT 6**  
27,915 S.F.

**UNIT 4**  
65,730 S.F.  
RLC - 4

**UNIT 1**  
81,405 S.F.

**UNIT 2**  
34,305 S.F.  
RLC - 2

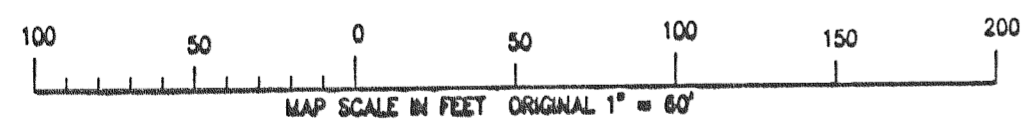
**UNIT 3**  
33,870 S.F.  
RLC - 3

POB SW COR. LOT 1 CSM 1128

INTERSTATE HIGHWAY "43"

- LEGEND**
- = FOUND IRON REBAR STAKE
  - = SET IRON REBAR STAKE
  - = FOUND IRON PIPE STAKE
  - L.C.E. = LIMITED COMMON ELEMENT

NOTE: ALL RIPRAP CHANNELS ARE GENERAL COMMON ELEMENTS.



MAPPING DATE 12/13/99

I HEREBY CERTIFY THAT THIS PLAT IS A CORRECT REPRESENTATION OF THE CONDOMINIUM DESCRIBED TO THE BEST OF MY PROFESSIONAL KNOWLEDGE AND BELIEF AND THAT THE IDENTIFICATION AND LOCATION OF EACH UNIT AND THE COMMON ELEMENTS CAN BE DETERMINED FROM THE PLAT.

DATED: 5/26/99

*Peter S. Gordon*  
PETER S. GORDON R.L.S. 2101

