

Condominium Plat
Willow View Condominiums
Village of East Troy

Legal description for Condominium
LOT 83, IN LYNNDALE SUBDIVISION, ADDITION NO. 2, located in the Northwest 1/4 of Section 20, Town 4 North, Range 18 East, in the Village of East Troy, Walworth County, Wisconsin.

I, Terrance E. Pisarek, do hereby certify that I have surveyed the above described property and that this survey is an accurate representation of the constructed or to be constructed on this property.

This Condominium plat is a correct representation of WILLOW VIEW CONDOMINIUMS, and the identification of each unit and the common elements can be determined from the plat. The common elements are identified to be all of the Condominium property, except the individual units and the limited common elements described on this plat. The undersigned Land Surveyor makes no certification as to the accuracy of diagrammatic floor plans of the Condominium buildings and units contained in the plat or the approximate dimensions of floor areas thereof.

Declarant: Berg - Redel Condominium Partnership

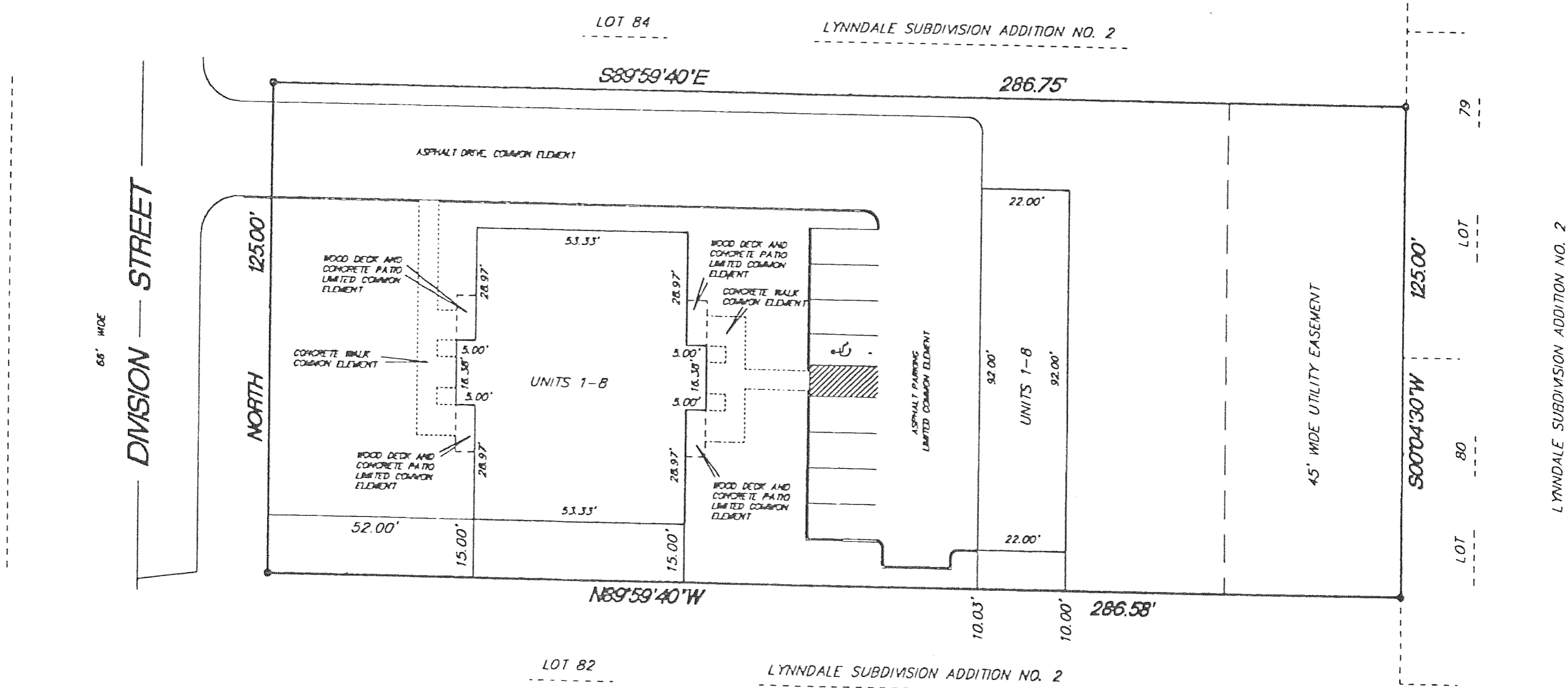


SCALE 1"=30'

o FOUND 1" IRON PIPE



Terrance E. Pisarek S-1930
Dated this 15th day of April, 1997
Revised this 13th day of August, 1997



REVISIONS :