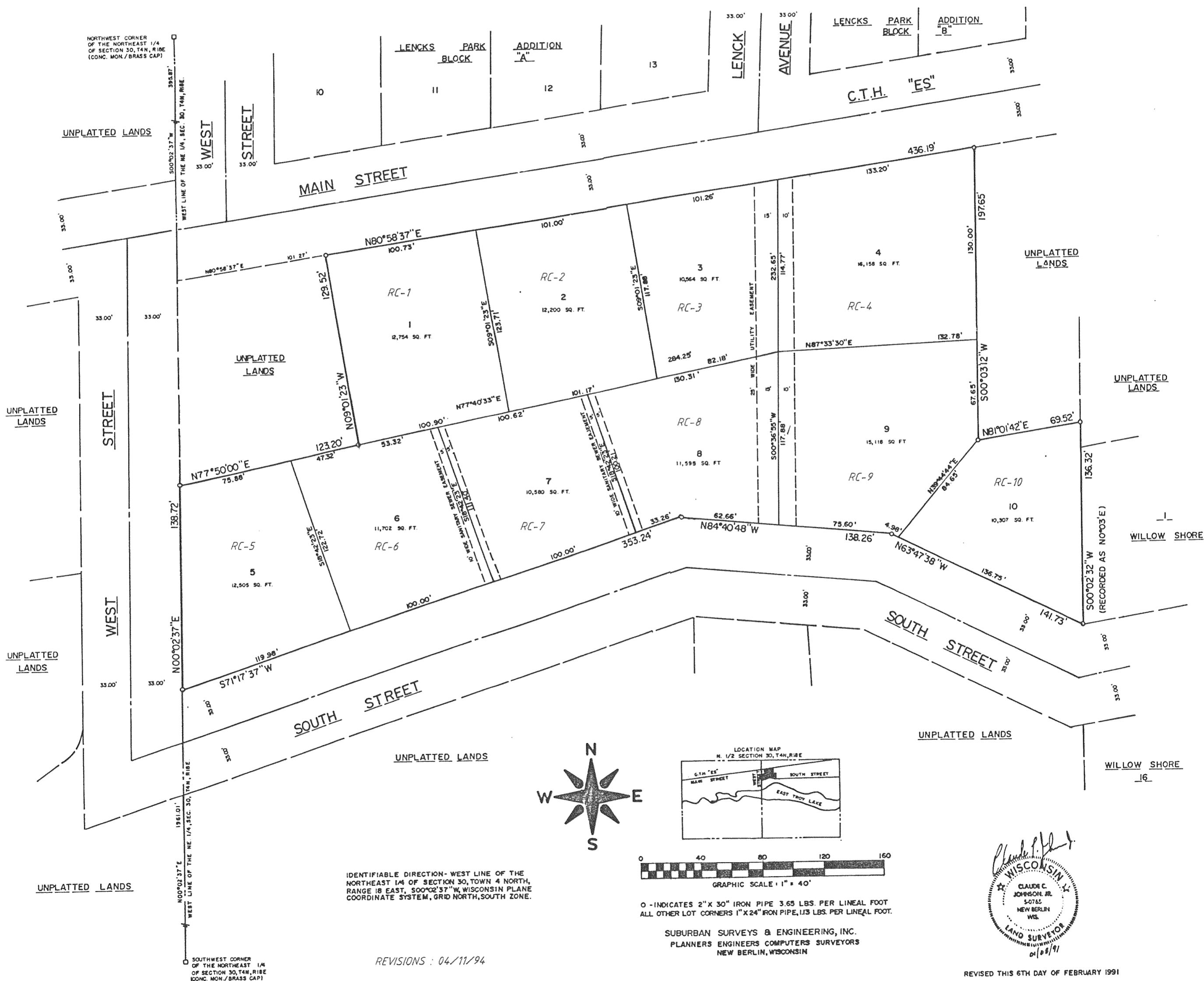


# CARDINAL HAVEN

PART OF THE NORTHWEST 1/4 OF THE NORTHEAST 1/4 OF SECTION 30, TOWN 4 NORTH, RANGE 18 EAST, VILLAGE OF EAST TROY, WALWORTH COUNTY, WISCONSIN.



NORTHWEST CORNER OF THE NORTHEAST 1/4 OF SECTION 30, T4N, R18E (CONC. MON./BRASS CAP)

UNPLATTED LANDS

WEST STREET

LENCK'S PARK BLOCK ADDITION "A"

LENCK'S PARK BLOCK ADDITION "B"

LENCK AVENUE

C.T.H. "ES"

MAIN STREET

UNPLATTED LANDS

UNPLATTED LANDS

UNPLATTED LANDS

WEST STREET

UNPLATTED LANDS

WILLOW SHORE

UNPLATTED LANDS

WEST STREET

SOUTH STREET

UNPLATTED LANDS

UNPLATTED LANDS

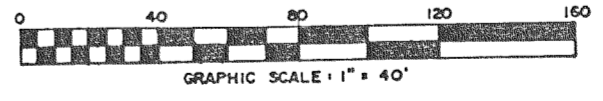
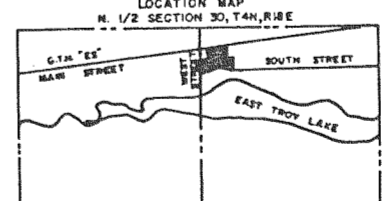
WILLOW SHORE

UNPLATTED LANDS

SOUTHWEST CORNER OF THE NORTHEAST 1/4 OF SECTION 30, T4N, R18E (CONC. MON./BRASS CAP)

IDENTIFIABLE DIRECTION - WEST LINE OF THE NORTHEAST 1/4 OF SECTION 30, TOWN 4 NORTH, RANGE 18 EAST, 300°02'37"W, WISCONSIN PLANE COORDINATE SYSTEM, GRID NORTH, SOUTH ZONE.

REVISIONS: 04/11/94



0 - INDICATES 2" X 30" IRON PIPE 3.65 LBS. PER LINEAL FOOT  
ALL OTHER LOT CORNERS 1" X 24" IRON PIPE, 1.13 LBS. PER LINEAL FOOT.

SUBURBAN SURVEYS & ENGINEERING, INC.  
PLANNERS ENGINEERS COMPUTERS SURVEYORS  
NEW BERLIN, WISCONSIN



REVISED THIS 6TH DAY OF FEBRUARY 1991