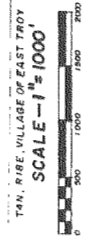
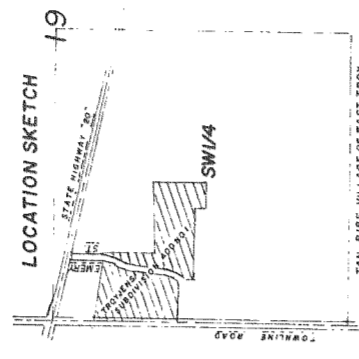


TROYJENS SUBDIVISION ADDITION NO. ONE

LOCATED IN THE NW 1/4 OF THE SW 1/4 AND THE SW 1/4 OF SECTION 19, T4N, R18E, S1N OF THE FOURTH PRINCIPAL MERIDIAN, VILLAGE OF EAST TROY, WALWORTH COUNTY, WISCONSIN

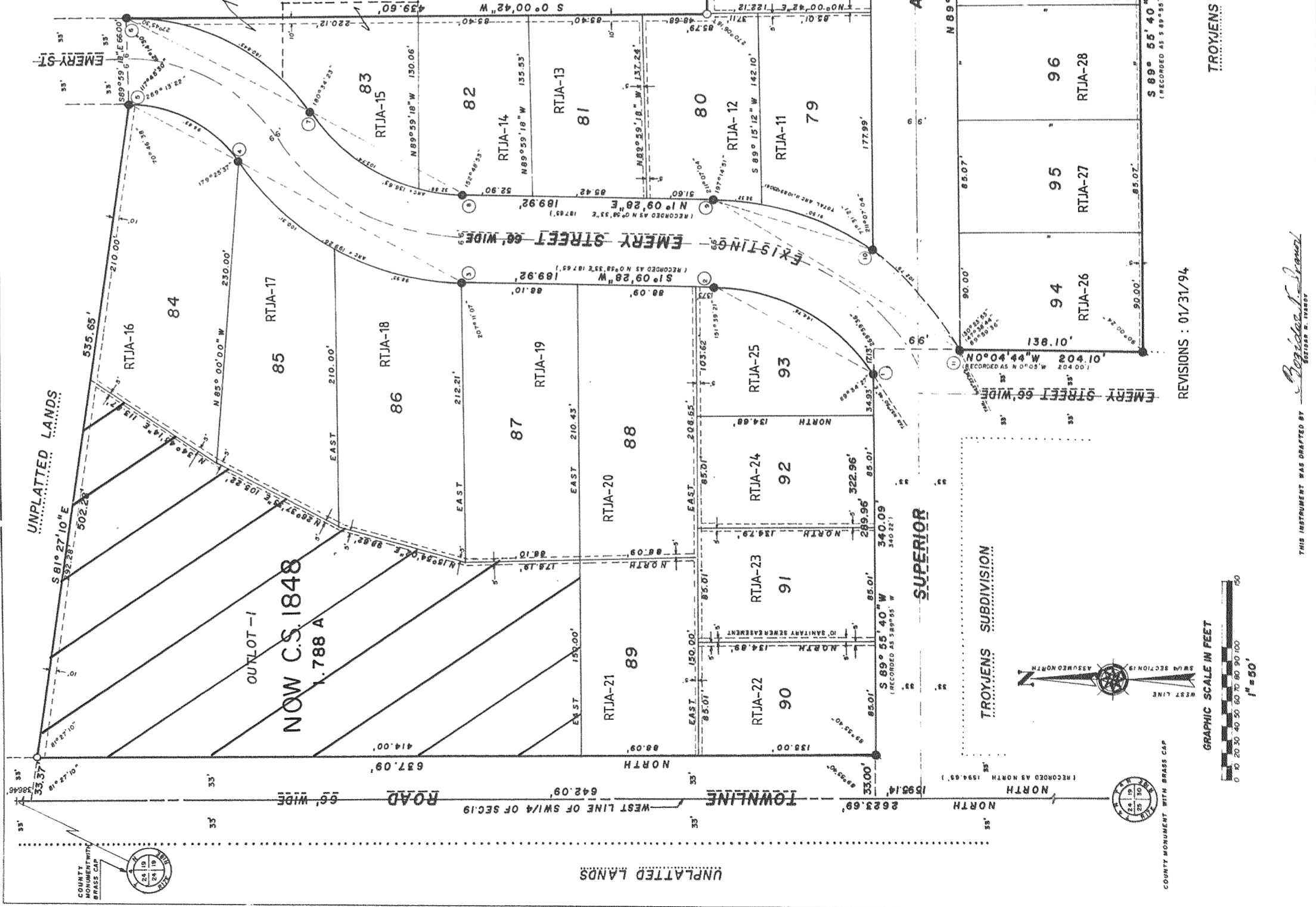
CURVE NO	LOT NO	CURVE DATA		TABLE		TANGENT BEARING
		RADIUS	CHORD LENGTH	CHORD BEARING	CENTRAL ANGLE	
1-2	83	145.31	13.893	N29°30'07"E	56°41'18"	N57°50'46"E
3-4	86	205.98	191.87	N26°20'35"E	54°22'16"	N57°50'46"E
5-6	88	205.98	191.87	N26°20'35"E	54°22'16"	N57°50'46"E
6-7	84	205.98	191.87	N26°20'35"E	54°22'16"	N57°50'46"E
7-8	85	165.00	154.63	S27°46'12"E	59°31'00"	N45°53'42"E
8-9	83	143.98	131.56	S28°20'35"W	54°22'14"	S55°31'42"W
9-10	80	143.98	131.56	S28°20'35"W	54°22'14"	S55°31'42"W
10-11	79	212.31	125.30	S18°24'19"W	36°59'42"	S35°59'10"W
11-12	80	212.31	125.30	S18°24'19"W	36°59'42"	S35°59'10"W
12-13	81	212.31	125.30	S18°24'19"W	36°59'42"	S35°59'10"W
13-14	82	212.31	125.30	S18°24'19"W	36°59'42"	S35°59'10"W
14-15	83	212.31	125.30	S18°24'19"W	36°59'42"	S35°59'10"W



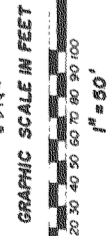
NOTE: ALL LINEAR MEASUREMENTS HAVE BEEN MADE TO THE NEAREST ONE HUNDREDTH OF A FOOT AND ALL ANGULAR MEASUREMENTS HAVE BEEN MADE TO THE NEAREST 30" AND COMPUTED TO THE NEAREST ONE SECOND.



DATED THIS 9th DAY OF August, 1978
REVISED THIS 9th DAY OF August, 1978
WILLIAM A. SHEARMAN S-1378



There are no objections to this plat with respect to Secs. 236, 236.15, 236.16, 236.20 and 236.21 (1) and (2) Statutes, or by the County Planning Agency.
Certified this 15th day of September 1978
Robert J. Cantelano
Department of Local Affairs & Development



THIS INSTRUMENT WAS DRAFTED BY
Richard J. ...
REGISTERED PROFESSIONAL SURVEYOR
STATE OF WISCONSIN

TROYJENS SUBDIVISION
REVISIONS: 01/31/94

TROYJENS SUBDIVISION
SHEET 1 OF 3 SHEETS

UNPLATTED LANDS

UNPLATTED LANDS

UNPLATTED LANDS