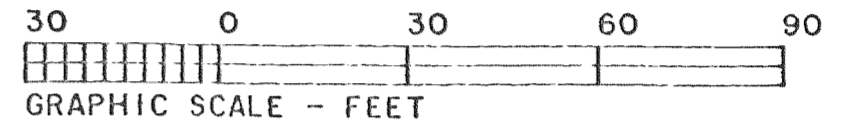


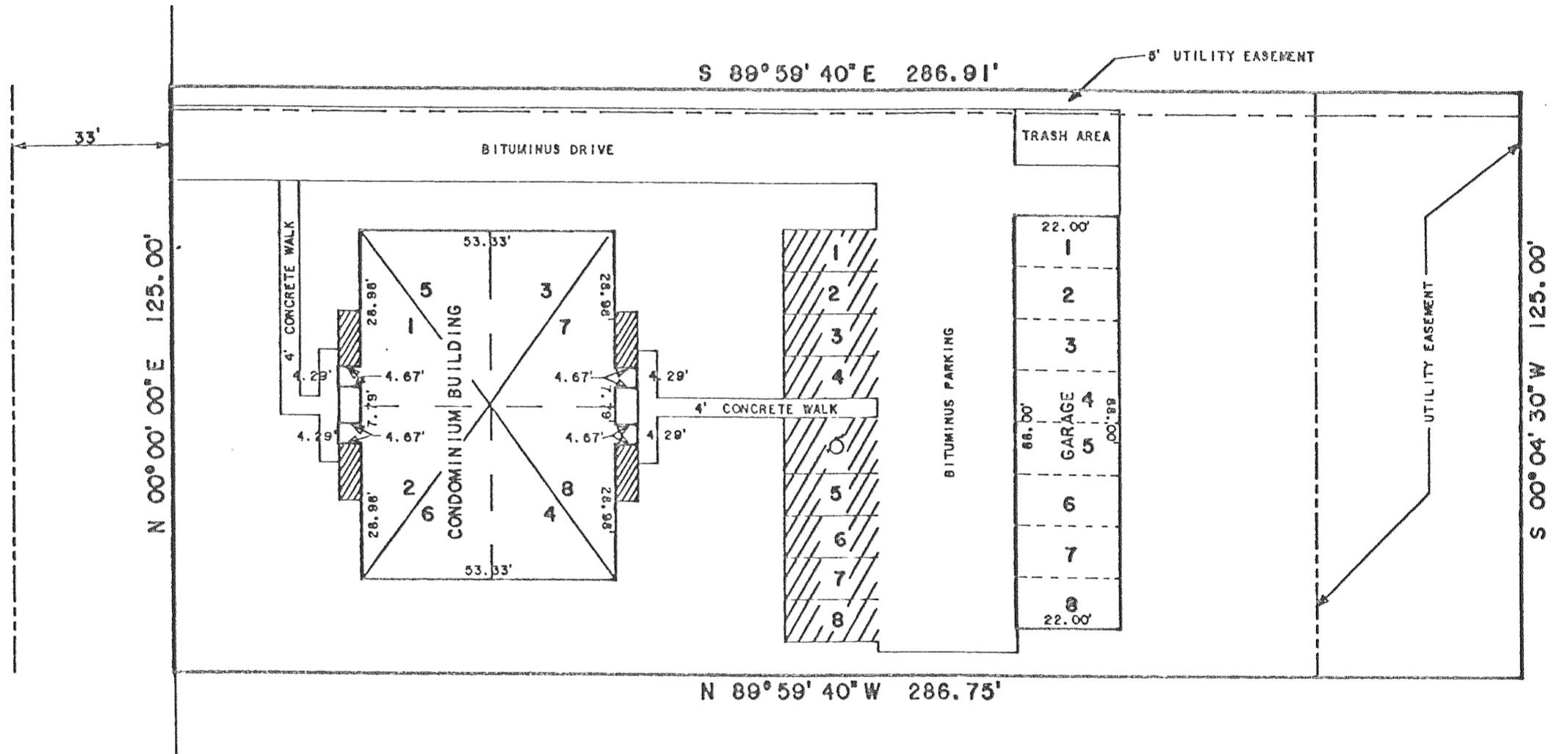
REVISED
 LYNNDALE CONDOMINIUMS II
 WALWORTH COUNTY
 CONDOMINIUM PLAT

LEGAL DESCRIPTION

LOT 84, LYNNDALE SUBDIVISION ADDITION NO. 2, BEING A
 SUBDIVISION OF A PART OF THE SOUTHWEST 1/4 OF THE
 NORTHWEST 1/4 OF SECTION 20, TOWN 4 NORTH, RANGE 18
 EAST, IN THE VILLAGE OF EAST TROY, COUNTY OF
 WALWORTH, STATE OF WISCONSIN.



NORTH DIVISION STREET



- DENOTED LIMITED COMMON ELEMENTS