

# BEULAH LAKE FARMS SUBDIVISION ADDITION #1

BEING A REDVISION OF LOTS 22 THROUGH 33 OF BEULAH LAKE FARMS,  
AND ADDITIONAL LANDS BEING LOCATED IN THE SW 1/4 OF THE NE 1/4  
AND PART OF THE NW 1/4 OF THE SE 1/4 OF SECTION 3, TOWN 4 NORTH,  
RANGE 18 EAST, TOWN OF EAST TROY, WALWORTH COUNTY, WISCONSIN.

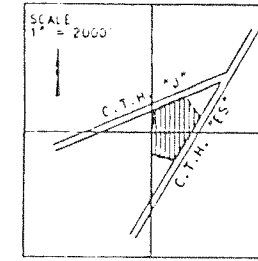
44D

THE NORTH LINE OF THE  
NW 1/4 WAS TAKEN TO BEAR  
S88°36'55"W.

BEARINGS NEED TO BE ROTATED  
6" (SECONDS) COUNTER CLOCKWISE  
TO MATCH STATE PLANE GRID  
AS PER SEWRPC DATA.

0 100 200 300  
SCALE 1" = 100'

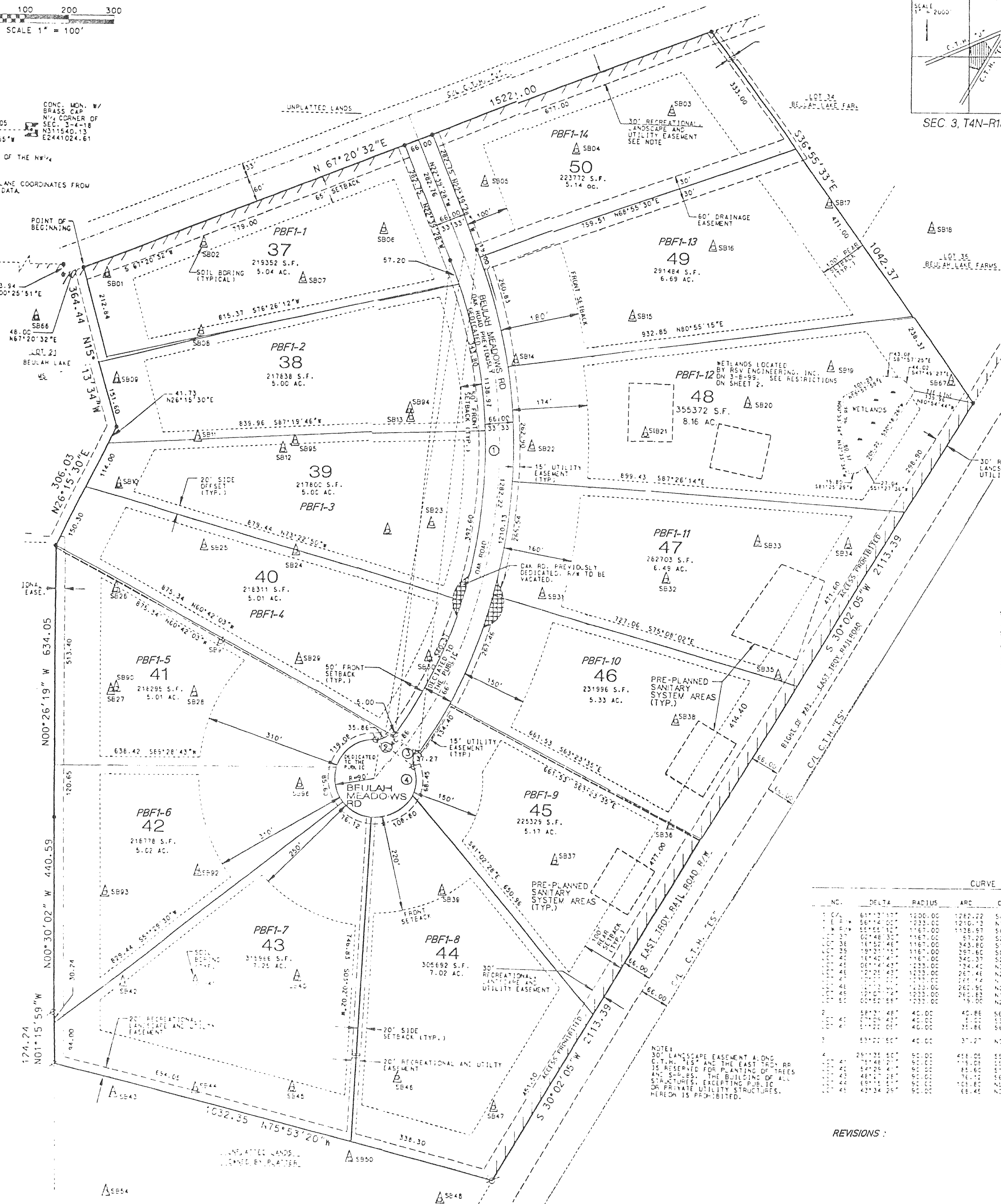
LOCATION MAP



SEC 3, T4N-R18E

LEGEND

[ ]	BUILDING ENVELOPES
S.F.	SQUARE FOOTAGE
⊗	IRON PIPE SET 2" DIA x 30" L. 3.65' x 1.6'
---	ACCESS PROHIBITED
•	2" IRON PIPE FOUND



WETLAND PRESERVATION RESTRICTIONS:

1. GRADING AND FILLING SHALL BE PROHIBITED UNLESS SPECIFICALLY AUTHORIZED BY THE MUNICIPALITY IN WHICH THEY ARE LOCATED AND, IF APPLICABLE, WALWORTH COUNTY, AND THE ARMY CORP OF ENGINEERS.
2. THE REMOVAL OF TOPSOIL OR OTHER EARTHEN MATERIALS SHALL BE PROHIBITED.
3. THE REMOVAL OR DESTRUCTION OF ANY VEGETATIVE COVER, I.E., TREES, SHRUBS, GRASSES, ETC., SHALL BE PROHIBITED WITH THE EXCEPTION OF THE REMOVAL OF DEAD, DISEASED OR DYING VEGETATION AT THE DISCRETION OF LANDOWNER, OR SILVICULTURAL THINNING UPON THE APPROVAL OF THE TOWN OF EAST TROY.
4. GRAZING BY DOMESTICATED ANIMALS, I.E., HORSES, COWS, ETC., SHALL BE PROHIBITED.
5. THE INTRODUCTION OF PLANT MATERIAL NOT INDIGENOUS TO THE EXISTING ENVIRONMENT OF THE WETLAND PRESERVATION AREA SHALL BE PROHIBITED.
6. PONDS MAY BE PERMITTED SUBJECT TO THE APPROVAL OF THE MUNICIPALITY IN WHICH THEY ARE LOCATED AND, IF APPLICABLE, WALWORTH CO., THE TOWN, AND THE ARMY CORP OF ENGINEERS.
7. CONSTRUCTION OF BUILDINGS IS PROHIBITED.

CURVE TABLE DATA

NO.	DELTA	RADIUS	ARC	CHD. BRG.	CHD. L.	TANGENT BRG.
				IN		OUT
1	61°32'17"	1200.00	1267.22	S0°57'10.5"E	1222.05	S27°35'26"E
2	56°42'02"	1200.00	1260.73	N0°27'32"E	1162.15	S27°35'26"E
3	56°42'02"	1200.00	1260.73	S0°18'06"W	1094.30	S27°35'26"E
4	57°20'00"	1167.00	1225.81	S0°15'13"E	1094.30	S27°35'26"E
5	16°45'48"	1167.00	343.80	S°12'24.25"E	342.58	S02°58'12"E
6	16°45'48"	1167.00	343.80	S°12'24.25"E	342.58	S02°58'12"E
7	16°45'48"	1167.00	343.80	S°12'24.25"E	342.58	S02°58'12"E
8	16°45'48"	1167.00	343.80	S°12'24.25"E	342.58	S02°58'12"E
9	16°45'48"	1167.00	343.80	S°12'24.25"E	342.58	S02°58'12"E
10	16°45'48"	1167.00	343.80	S°12'24.25"E	342.58	S02°58'12"E
11	16°45'48"	1167.00	343.80	S°12'24.25"E	342.58	S02°58'12"E
12	16°45'48"	1167.00	343.80	S°12'24.25"E	342.58	S02°58'12"E
13	16°45'48"	1167.00	343.80	S°12'24.25"E	342.58	S02°58'12"E
14	16°45'48"	1167.00	343.80	S°12'24.25"E	342.58	S02°58'12"E
15	16°45'48"	1167.00	343.80	S°12'24.25"E	342.58	S02°58'12"E
16	16°45'48"	1167.00	343.80	S°12'24.25"E	342.58	S02°58'12"E
17	16°45'48"	1167.00	343.80	S°12'24.25"E	342.58	S02°58'12"E
18	16°45'48"	1167.00	343.80	S°12'24.25"E	342.58	S02°58'12"E
19	16°45'48"	1167.00	343.80	S°12'24.25"E	342.58	S02°58'12"E
20	16°45'48"	1167.00	343.80	S°12'24.25"E	342.58	S02°58'12"E
21	16°45'48"	1167.00	343.80	S°12'24.25"E	342.58	S02°58'12"E
22	16°45'48"	1167.00	343.80	S°12'24.25"E	342.58	S02°58'12"E
23	16°45'48"	1167.00	343.80	S°12'24.25"E	342.58	S02°58'12"E
24	16°45'48"	1167.00	343.80	S°12'24.25"E	342.58	S02°58'12"E
25	16°45'48"	1167.00	343.80	S°12'24.25"E	342.58	S02°58'12"E
26	16°45'48"	1167.00	343.80	S°12'24.25"E	342.58	S02°58'12"E
27	16°45'48"	1167.00	343.80	S°12'24.25"E	342.58	S02°58'12"E
28	16°45'48"	1167.00	343.80	S°12'24.25"E	342.58	S02°58'12"E
29	16°45'48"	1167.00	343.80	S°12'24.25"E	342.58	S02°58'12"E
30	16°45'48"	1167.00	343.80	S°12'24.25"E	342.58	S02°58'12"E
31	16°45'48"	1167.00	343.80	S°12'24.25"E	342.58	S02°58'12"E
32	16°45'48"	1167.00	343.80	S°12'24.25"E	342.58	S02°58'12"E
33	16°45'48"	1167.00	343.80	S°12'24.25"E	342.58	S02°58'12"E
34	16°45'48"	1167.00	343.80	S°12'24.25"E	342.58	S02°58'12"E
35	16°45'48"	1167.00	343.80	S°12'24.25"E	342.58	S02°58'12"E
36	16°45'48"	1167.00	343.80	S°12'24.25"E	342.58	S02°58'12"E
37	16°45'48"	1167.00	343.80	S°12'24.25"E	342.58	S02°58'12"E
38	16°45'48"	1167.00	343.80	S°12'24.25"E	342.58	S02°58'12"E
39	16°45'48"	1167.00	343.80	S°12'24.25"E	342.58	S02°58'12"E
40	16°45'48"	1167.00	343.80	S°12'24.25"E	342.58	S02°58'12"E
41	16°45'48"	1167.00	343.80	S°12'24.25"E	342.58	S02°58'12"E
42	16°45'48"	1167.00	343.80	S°12'24.25"E	342.58	S02°58'12"E
43	16°45'48"	1167.00	343.80	S°12'24.25"E	342.58	S02°58'12"E
44	16°45'48"	1167.00	343.80	S°12'24.25"E	342.58	S02°58'12"E
45	16°45'48"	1167.00	343.80	S°12'24.25"E	342.58	S02°58'12"E
46	16°45'48"	1167.00	343.80	S°12'24.25"E	342.58	S02°58'12"E
47	16°45'48"	1167.00	343.80	S°12'24.25"E	342.58	S02°58'12"E
48	16°45'48"	1167.00	343.80	S°12'24.25"E	342.58	S02°58'12"E
49	16°45'48"	1167.00	343.80	S°12'24.25"E	342.58	S02°58'12"E
50	16°45'48"	1167.00	343.80	S°12'24.25"E	342.58	S02°58'12"E

REVISIONS :