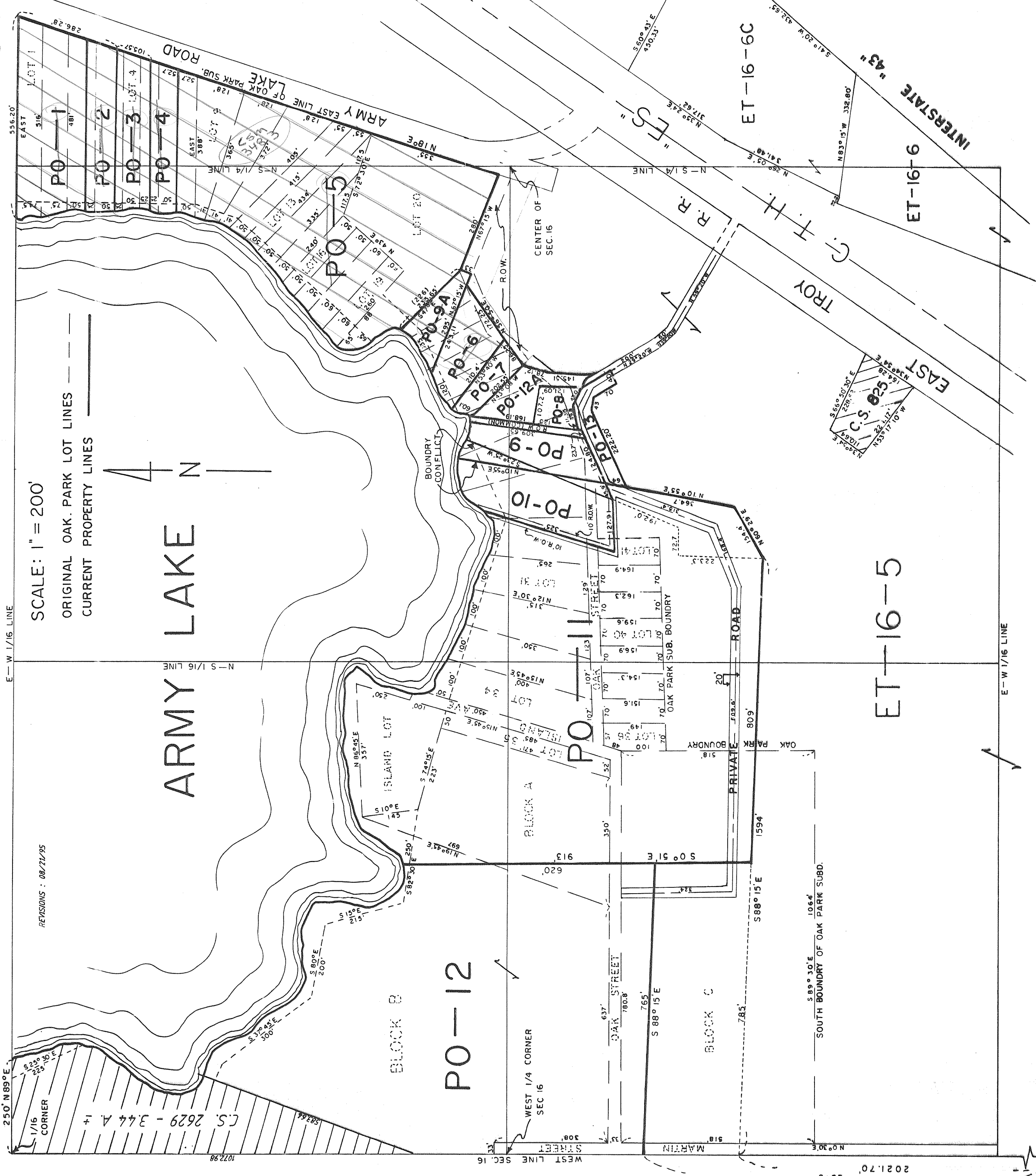
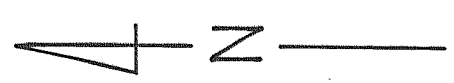


# OAK PARK - SEC. 16 - T4N R18E - EAST TROY



SCALE: 1" = 200'

ORIGINAL OAK PARK LOT LINES ---  
CURRENT PROPERTY LINES ———



## ARMY LAKE

REVISIONS: 08/21/95

C.S. 2629 - 344 A 1+

1/16 CORNER

### PO-12

### ET-16-5

### ET-16-6C

### ET-16-6

### INTERSTATE "43"

### TROY

### "FS"

### R.R.

### BLOCK C

### BLOCK A

### BLOCK B

### PO-5

### PO-1

### PO-2

### PO-3

### PO-4

### PO-11

### PO-10

### PO-9

### PO-8

### PO-7

### PO-6

### PO-9A

### LOT 1

### LOT 2

### LOT 3

### LOT 4

### LOT 5

### LOT 6

### LOT 7

### LOT 8

### LOT 9

### LOT 10

### LOT 11

### LOT 12

### LOT 13

### LOT 14

### LOT 15

### LOT 16

### LOT 17

### LOT 18

### LOT 19

### LOT 20

### LOT 21

### LOT 22

### LOT 23

### LOT 24

### LOT 25

### LOT 26

### LOT 27

### LOT 28

### LOT 29

S.W. CORNER SEC. 16, T4N, R18E

2021.70  
2273