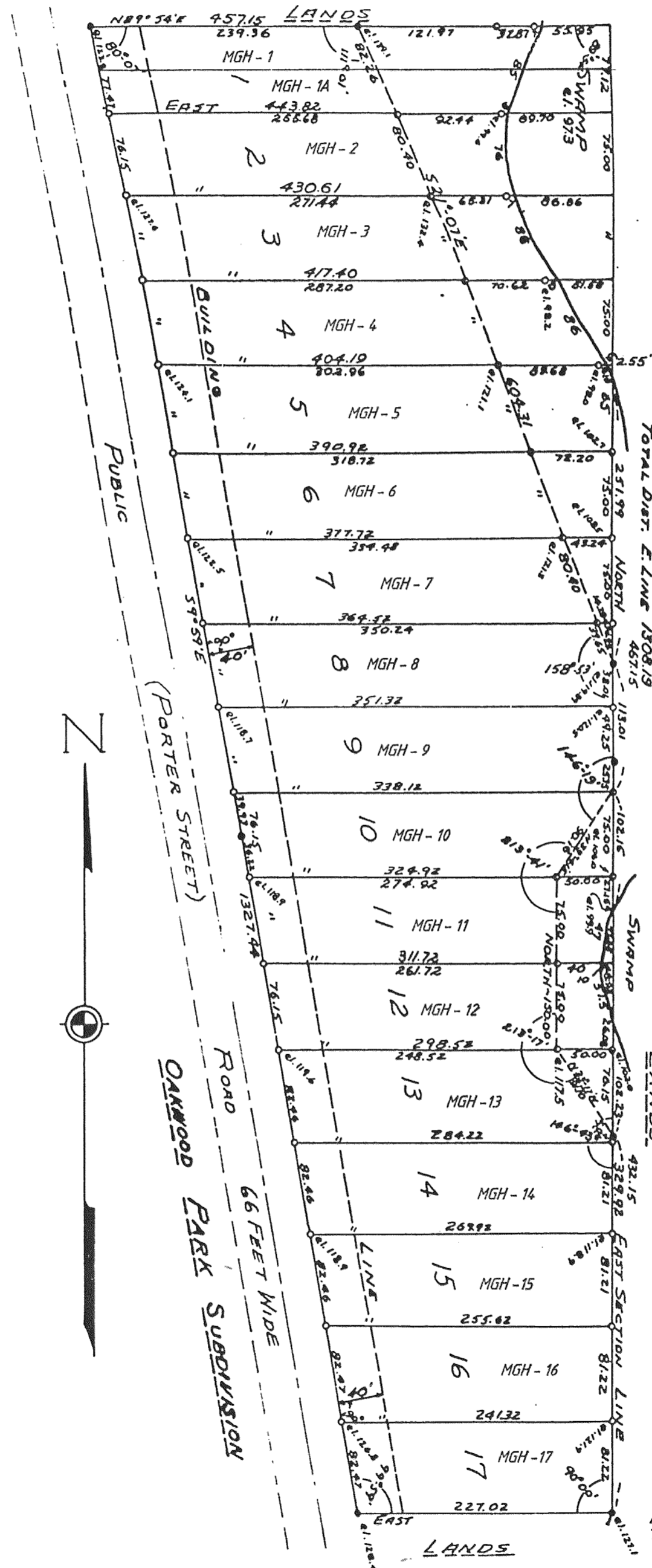


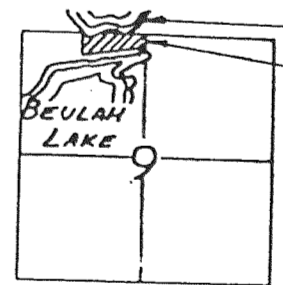
# McGREGOR HIGHLANDS SUBDIVISION

## SECTION 9, T4N, R18E EAST TROY



● CONCRETE MONUMENT-5" IN DIA. & 30" LONG  
 ○ 1" x 30" IRON PIPE  
 ○ 1" x 24" IRON PIPE  
 BENCH MARK -  
 RAILROAD COMMISSION BENCH MARK NO 292-A  
 SET IN TOP OF WEST WASTE WALL ON SOUTH  
 SIDE OF BRIDGE OVER OUTLET OF LAKE BEULAH  
 ASSUMED ELEVATION 100.00

LAKE BEULAH  
 HIGH WATER ELEVATION - 97.63  
 LOW WATER ELEVATION - 97.24



SECTION 9, T4N R18E OF  
 WALWORTH COUNTY, WIS.  
 LOCATION DRAWING

EAST 1/4 CORNER SECTION 9  
T4N R18E OF 4TH P.M.