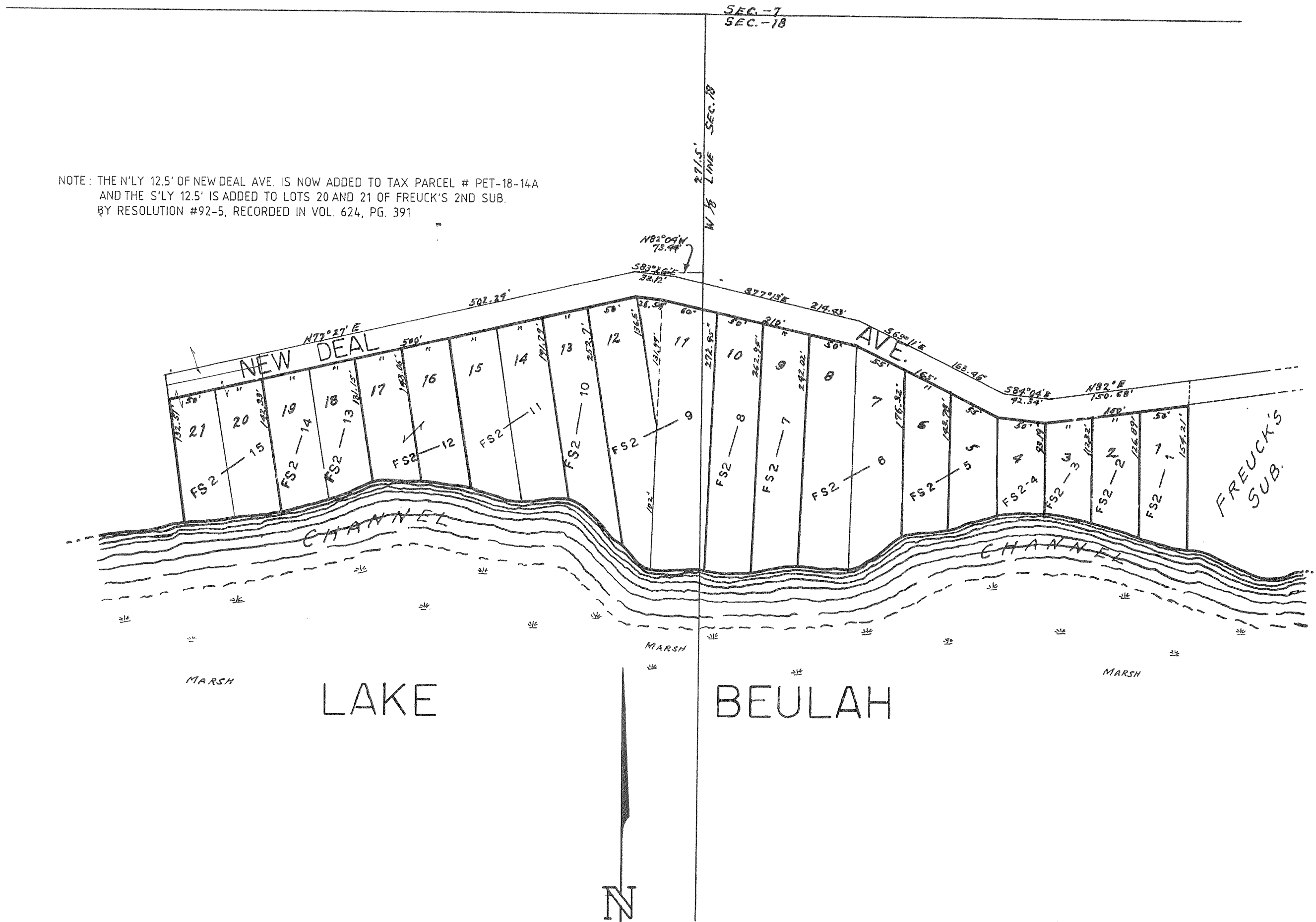


# FREUCK'S 2<sup>ND</sup> SUB.

SEC. 18 - T4N - R18E - EAST TROY

NOTE: THE N'LY 12.5' OF NEW DEAL AVE. IS NOW ADDED TO TAX PARCEL # PET-18-14A AND THE S'LY 12.5' IS ADDED TO LOTS 20 AND 21 OF FREUCK'S 2ND SUB. BY RESOLUTION #92-5, RECORDED IN VOL. 624, PG. 391



Scale: - 1 in. = 100 ft.  
 ——— Section Lines.  
 ——— Lot Lines.  
 - - - - Property Lines.

REVISIONS : 07/25/86  
 07/09/93

