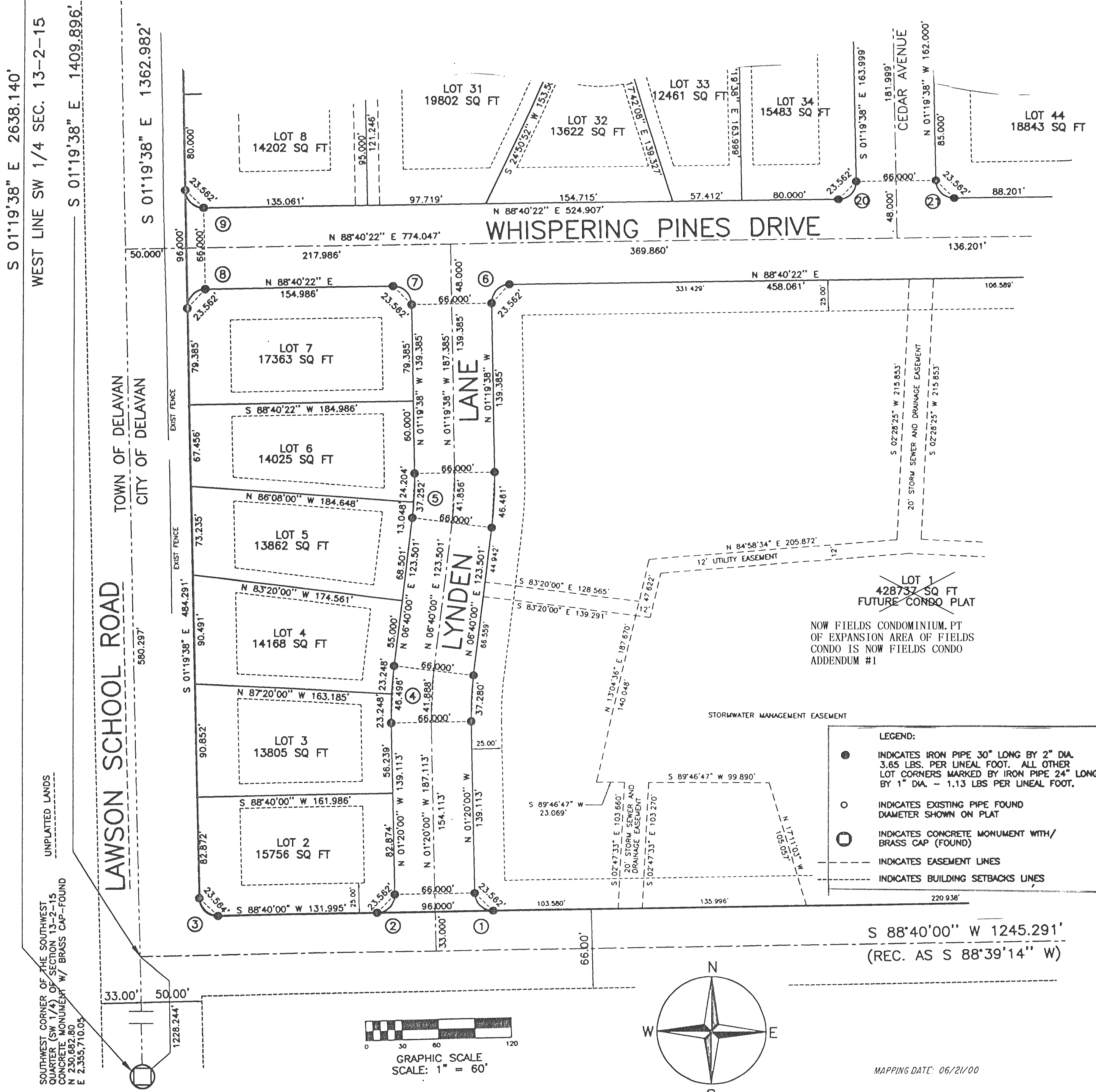


THE FIELDS OF DELAVAN

94B

BEING A PART OF THE NORTHWEST QUARTER (NW 1/4) AND THE SOUTHWEST QUARTER (SW 1/4) OF THE SOUTHWEST QUARTER (SW 1/4) OF SECTION 13, TOWN 2 NORTH, RANGE 15 EAST, CITY OF DELAVAN, WALWORTH COUNTY, WISCONSIN.



SOUTHWEST CORNER OF THE SOUTHWEST QUARTER (SW 1/4) OF SECTION 13-2-15 CONCRETE MONUMENT W/ BRASS CAP-FOUND N 230.682.80 E 2.355,710.05

NOW FIELDS CONDOMINIUM. PT OF EXPANSION AREA OF FIELDS CONDO IS NOW FIELDS CONDO ADDENDUM #1

S 88°40'00" W 1245.291'
(REC. AS S 88°39'14" W)