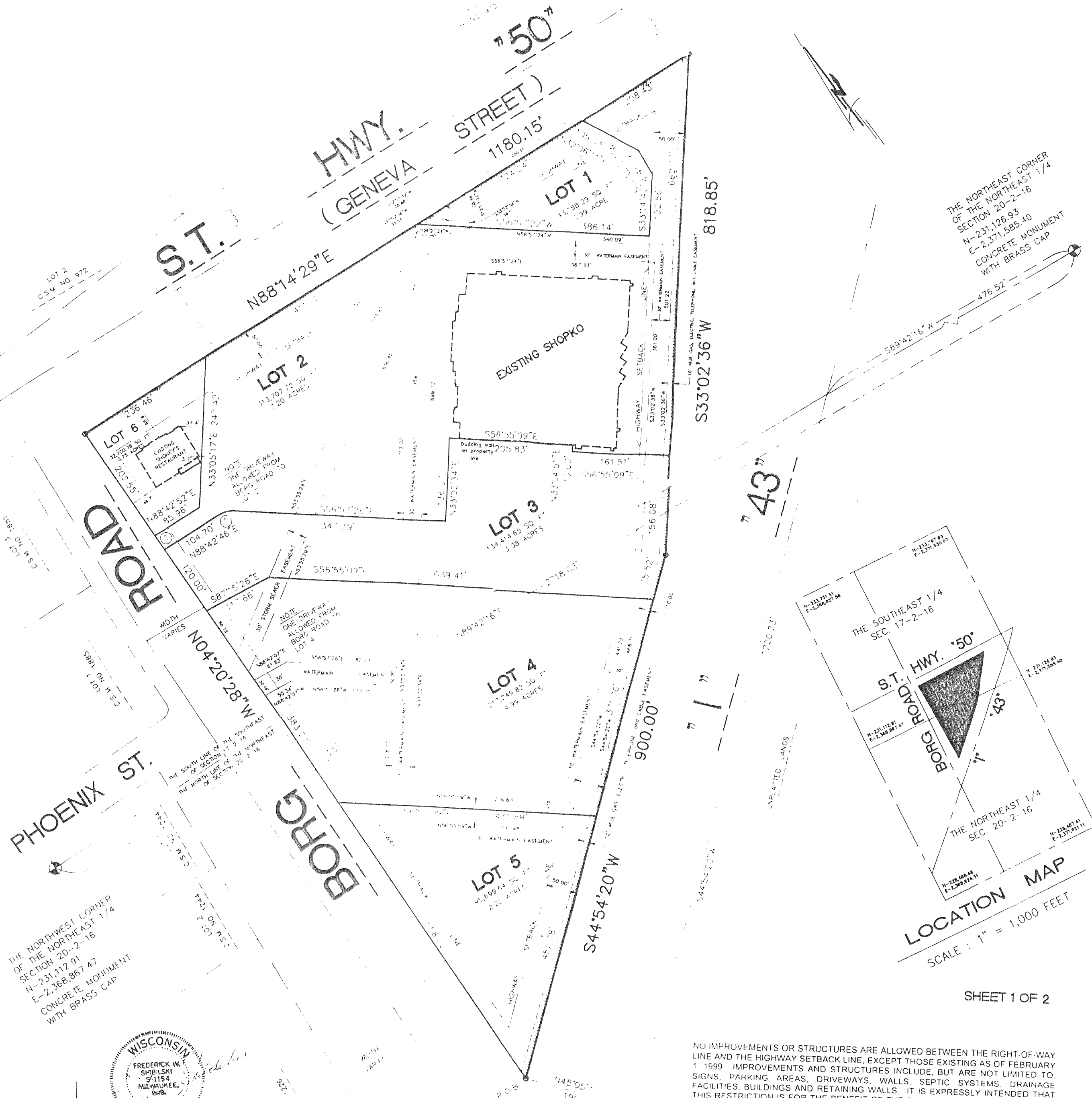


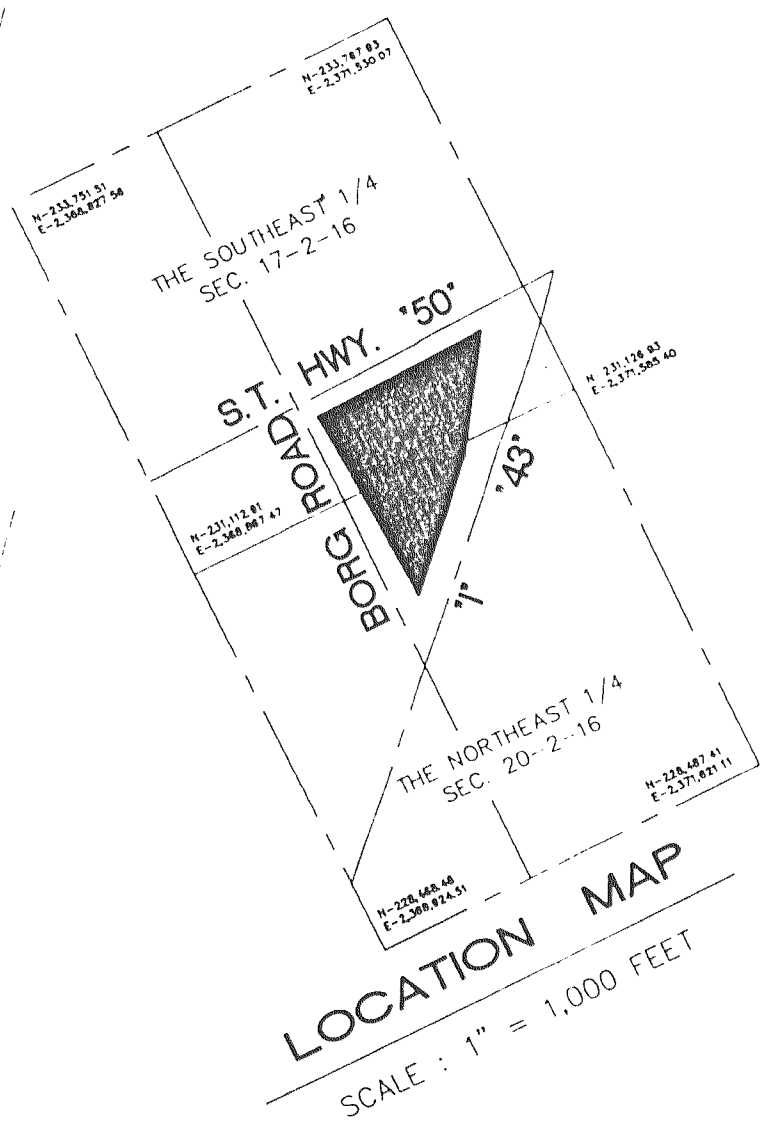
PINE TREE PLAZA

BEING A PART OF THE SOUTHEAST 1/4 AND SOUTHWEST 1/4 OF THE SOUTHEAST 1/4 OF SECTION 17, AND PART OF THE NORTHEAST 1/4 AND NORTHWEST 1/4 OF SECTION 20, TOWN 2 NORTH, RANGE 16 EAST, IN THE CITY OF DELAVAN, WALWORTH COUNTY, WISCONSIN



THE NORTHEAST CORNER OF THE NORTHEAST 1/4 SECTION 20-2-16 N-231,126.93 E-2,371,585.40 CONCRETE MONUMENT WITH BRASS CAP

THE NORTHWEST CORNER OF THE NORTHEAST 1/4 SECTION 20-2-16 N-231,112.91 E-2,368,867.47 CONCRETE MONUMENT WITH BRASS CAP



LOCATION MAP
SCALE: 1" = 1,000 FEET

NO IMPROVEMENTS OR STRUCTURES ARE ALLOWED BETWEEN THE RIGHT-OF-WAY LINE AND THE HIGHWAY SETBACK LINE, EXCEPT THOSE EXISTING AS OF FEBRUARY 1, 1999. IMPROVEMENTS AND STRUCTURES INCLUDE, BUT ARE NOT LIMITED TO, SIGNS, PARKING AREAS, DRIVEWAYS, WALLS, SEPTIC SYSTEMS, DRAINAGE FACILITIES, BUILDINGS AND RETAINING WALLS. IT IS EXPRESSLY INTENDED THAT THIS RESTRICTION IS FOR THE BENEFIT OF THE PUBLIC AS PROVIDED IN SECTION 236.293, WISCONSIN STATUTES, AND SHALL BE ENFORCEABLE BY THE WISCONSIN DEPARTMENT OF TRANSPORTATION OR ITS ASSIGNS. CONTACT THE WISCONSIN DEPARTMENT OF TRANSPORTATION FOR MORE INFORMATION. THE PHONE NUMBER MAY BE OBTAINED BY CONTACTING THE COUNTY HIGHWAY DEPARTMENT.