

# WHISPERING PINES ADDITION No. 1

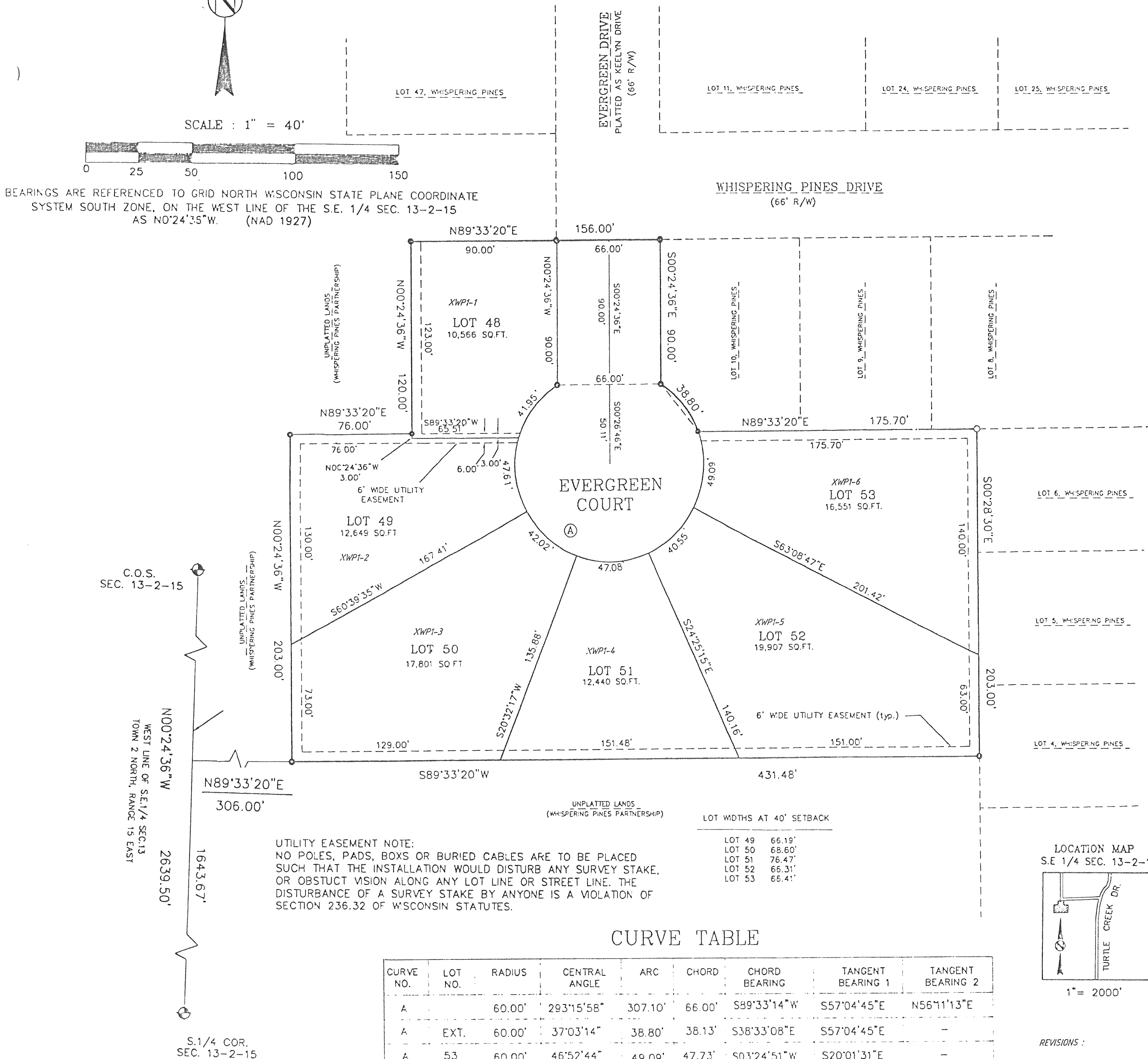
BEING A PART OF NW 1/4 OF THE SE 1/4  
OF SEC. 13, T.2N., R.15E., CITY OF DELAVAN, WALWORTH COUNTY, WI.



SCALE : 1" = 40'



BEARINGS ARE REFERENCED TO GRID NORTH WISCONSIN STATE PLANE COORDINATE SYSTEM SOUTH ZONE, ON THE WEST LINE OF THE S.E. 1/4 SEC. 13-2-15 AS N0°24'35"W. (NAD 1927)



UTILITY EASEMENT NOTE:  
NO POLES, PADS, BOXS OR BURIED CABLES ARE TO BE PLACED SUCH THAT THE INSTALLATION WOULD DISTURB ANY SURVEY STAKE, OR OBSTRUCT VISION ALONG ANY LOT LINE OR STREET LINE. THE DISTURBANCE OF A SURVEY STAKE BY ANYONE IS A VIOLATION OF SECTION 236.32 OF WISCONSIN STATUTES.

LOT WIDTHS AT 40' SETBACK

LOT 49	66.19'
LOT 50	68.60'
LOT 51	76.47'
LOT 52	66.31'
LOT 53	66.41'

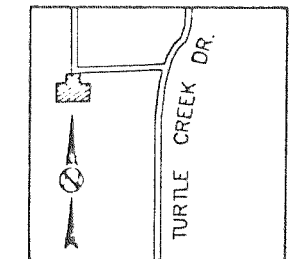
## CURVE TABLE

CURVE NO.	LOT NO.	RADIUS	CENTRAL ANGLE	ARC	CHORD	CHORD BEARING	TANGENT BEARING 1	TANGENT BEARING 2
A		60.00'	293°15'58"	307.10'	66.00'	S89°33'14"W	S57°04'45"E	N56°11'13"E
A	EXT.	60.00'	37°03'14"	38.80'	38.13'	S38°33'08"E	S57°04'45"E	-
A	53	60.00'	46°52'44"	49.09'	47.73'	S03°24'51"W	S20°01'31"E	-
A	52	60.00'	38°43'32"	40.55'	39.79'	S46°12'59"W	S26°51'13"W	-
A	51	60.00'	44°57'32"	47.08'	45.88'	S88°03'31"W	S65°34'45"W	-
A	50	60.00'	40°07'18"	42.02'	41.16'	N49°24'04"W	N69°27'43"W	-
A	49	60.00'	45°27'58"	47.61'	46.37'	N06°36'27"W	N29°20'25"E	-
A	48	60.00'	40°03'42"	41.95'	41.10'	N36°09'22"E	N16°07'31"W	N56°11'13"E

### LEGEND

- ⊕ - CONC MON W/ BRASS CAP
- ⊙ - 2" DIA. IRON PIPE SET, 30" LONG  
WT. = 3.65 LBS./LIN. FT.
- ⊙ - 1" DIA. IRON PIPE SET, 24" LONG WT. = 1.13 LBS./LIN. FT.  
AT ALL OTHER LOT CORNERS
- - 2" DIA. IRON PIPE FOUND

LOCATION MAP  
S.E. 1/4 SEC. 13-2-15



1" = 2000'

REVISIONS :