

EAGLE POINTE CONDOMINIUM
LOCATED IN NW 1/4 OF NE 1/4 AND NE 1/4 OF NW 1/4
SEC. 19, T. 2 N., R. 16 E., CITY OF DELAVAN, WALWORTH CO., WISCONSIN
DESCRIBED ON SHEET 2

**AMENDMENT
NO. 2**

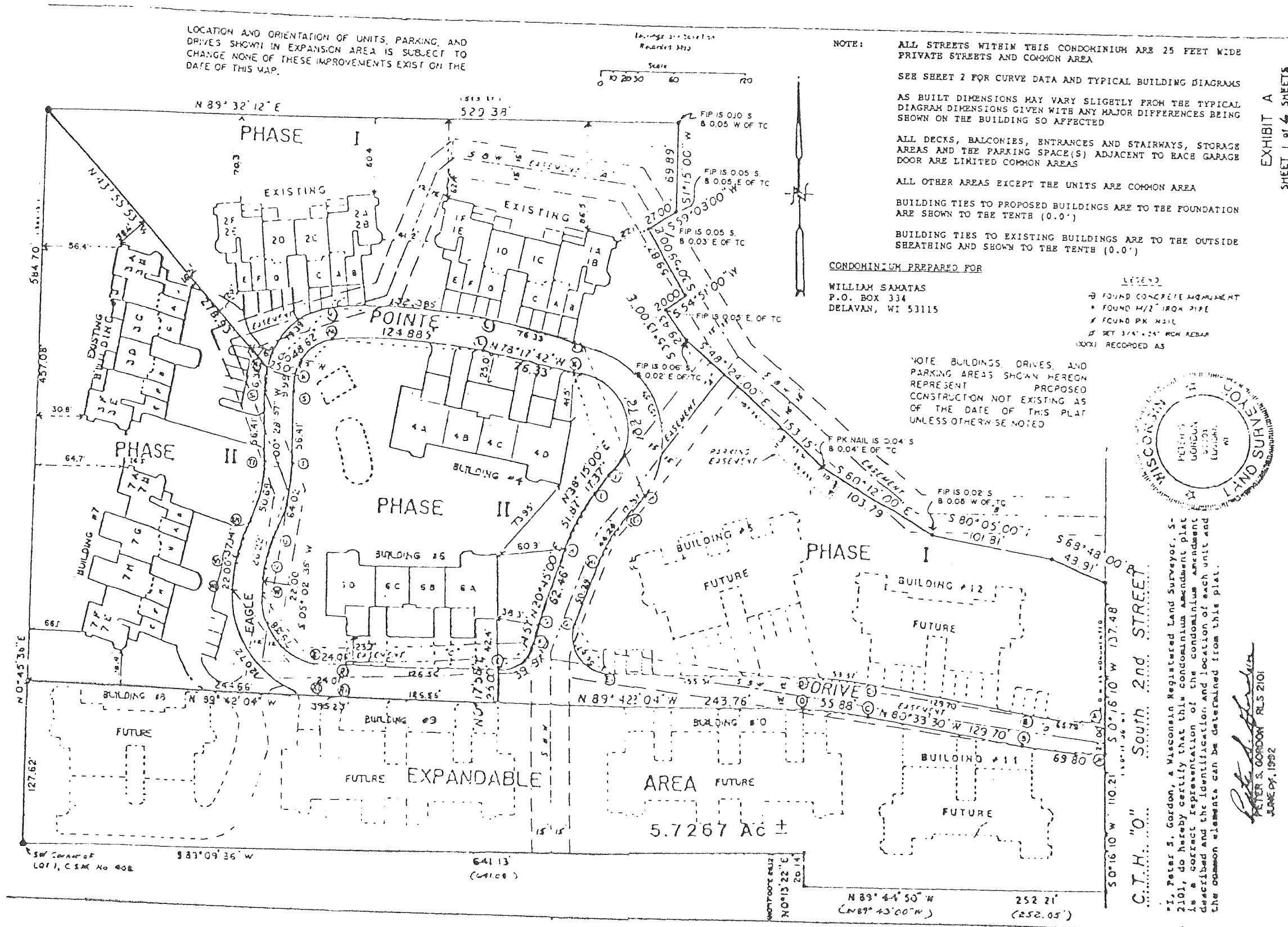
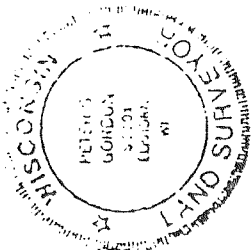


EXHIBIT A
SHEET 1 of 4 SHEETS



I, Peter S. Gordon, a Wisconsin Registered Land Surveyor, No. 2101, do hereby certify that this condominium amendment plat is a correct representation of the condominium amendment described and the identification and location of each unit and the common elements can be determined from this plat.

Peter S. Gordon
PETER S. GORDON, RLS 2101
JUNE 27, 1992