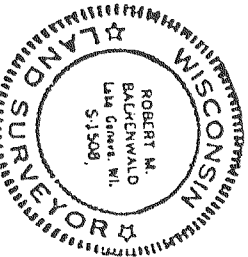
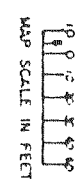


199033



SURVEYOR'S CERTIFICATE: I hereby certify that this plat is a correct representation of the condominium described to the best of my professional knowledge and belief and that the identification and location of each unit and the common elements can be determined from the plat.

ROBERT M. BARCHWALD WISCONSIN REGISTERED LAND SURVEYOR, S-1508

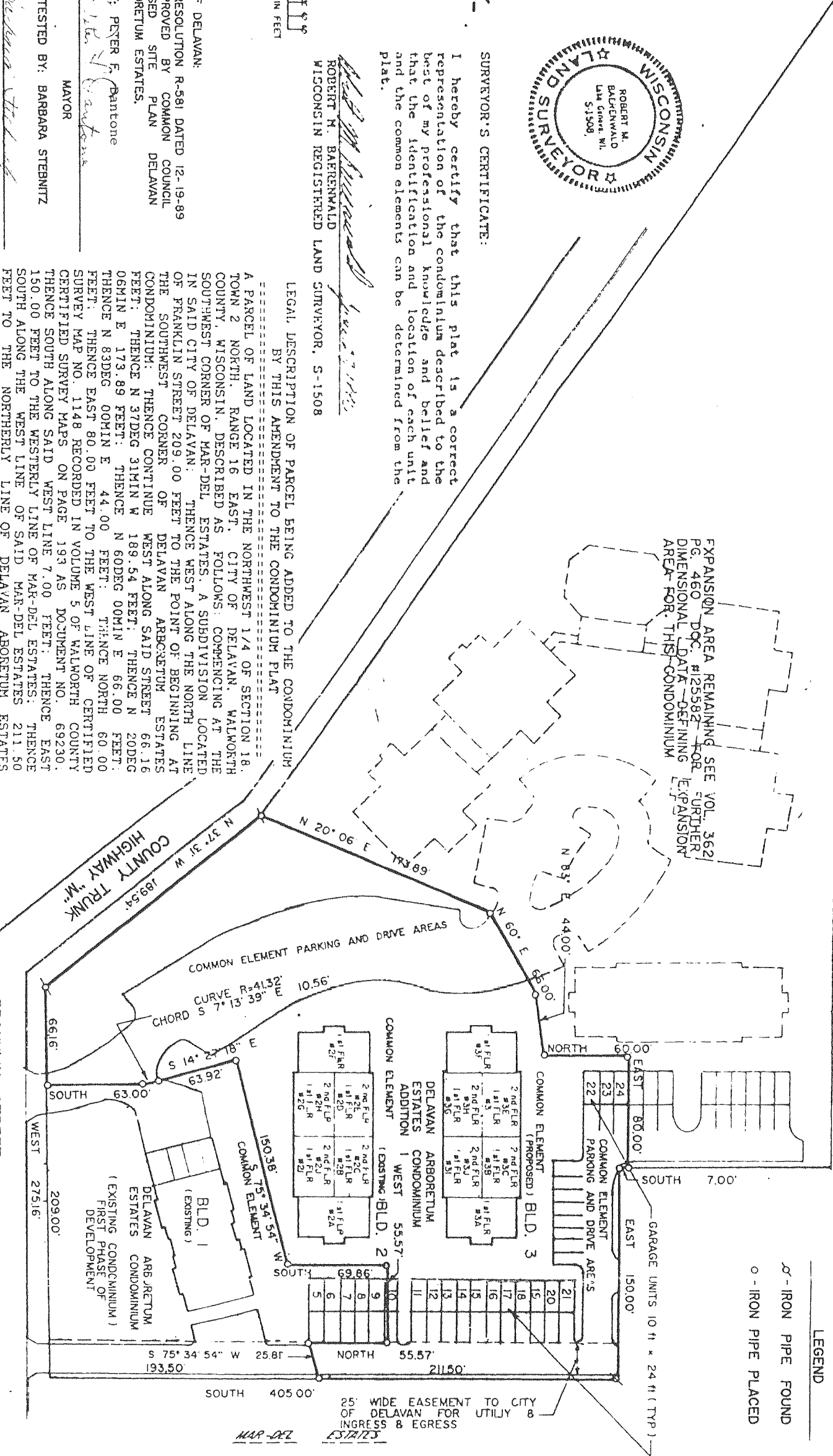


CITY OF DELAVAN: BY RESOLUTION R-581 DATED 12-19-89 APPROVED BY COMMON COUNCIL REVISED SITE PLAN DELAVAN ARBORETUM ESTATES.

ATTESTED BY: BARBARA STEBRNITZ DEPUTY CITY CLERK DATE: August 13, 1990

LEGAL DESCRIPTION OF PARCEL BEING ADDED TO THE CONDOMINIUM BY THIS AMENDMENT TO THE CONDOMINIUM PLAT: A PARCEL OF LAND LOCATED IN THE NORTHWEST 1/4 OF SECTION 18, TOWN 2 NORTH, RANGE 16 EAST, CITY OF DELAVAN, WALWORTH COUNTY, WISCONSIN... CONTAINING 2.16 ACRES MORE OR LESS.

DELAVAN ARBORETUM ESTATES CONDOMINIUM PLAT AMENDMENT ONE EXHIBIT A SHEET 1 OF 3 SHEETS WALWORTH COUNTY, WISCONSIN PROJECT NO. 3292



STATEMENT OF COMPLIANCE: I hereby certify that the within reproduction has been made from a camera lucida drawing of a camera lucida drawing of the original drawing...

I hereby certify that I have on this 15th day of August, 1990, microphotographed the above document in accordance with standards established by Sec. 228.03 (1) of Statutes and with established procedures.

LEGEND: - IRON PIPE FOUND, - IRON PIPE PLACED

90 AUG 14 PM 3 22 LOCAL TIME WALTHOR COUNTY WISCONSIN

Signatures and titles of project participants including William V. Sametias, Frank One of Elkhorn, and R.D. Bank of Elk Grove.