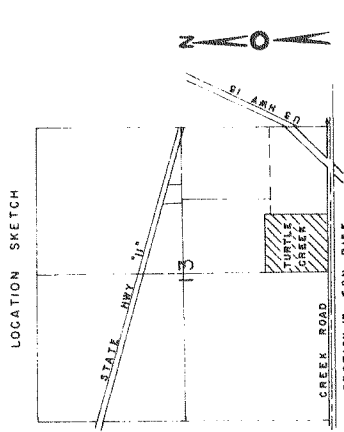
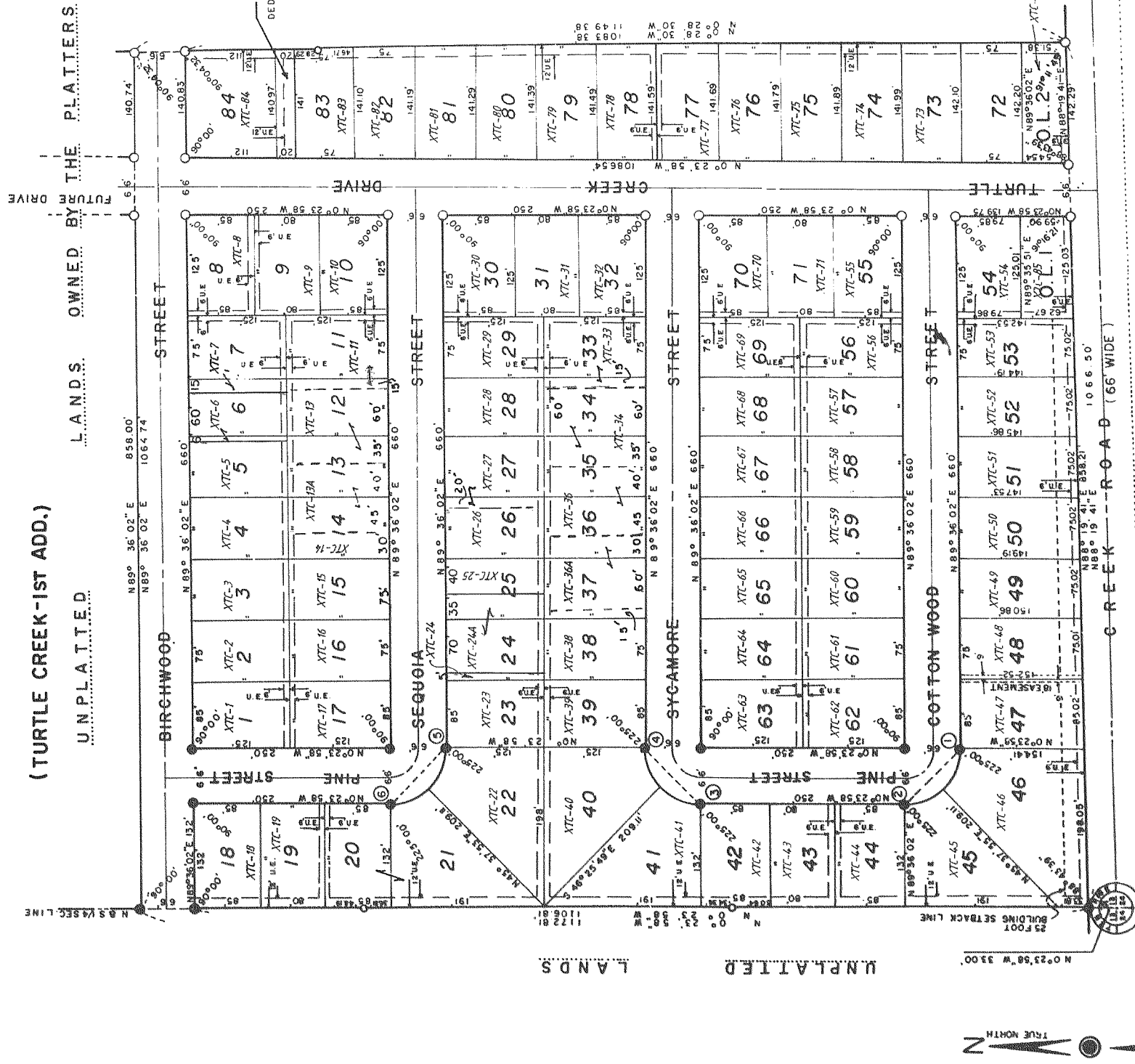


TURTLE CREEK

A SUBDIVISION LOCATED IN THE SW1/4 OF THE SE1/4 OF SECTION 13, T2N, R15E, CITY OF DELAVAN, WALWORTH COUNTY, WISCONSIN.

(TURTLE CREEK-1ST ADD.)



SCALE 1" = 2000'

UNPLATTED LAND OWNED BY THE DELAVAN PUBLIC SCHOOLS JOINT DISTRICT NO. 1 PHOENIX.

- LOT LINES** -----
- PROPERTY DIVISION** - - - - -
- LEGEND**
- 1/2" IN DIA ROUND IRON BAR, 30" LONG 3.77 LB/FT
 - 2" IN DIA ROUND IRON PIPE, 30" LONG 3.65 LB/FT
 - EXISTING IRON PIPE
 - ALL OTHER LOT CORNERS STAKED WITH 1" X 24" ROUND IRON PIPE, WEIGHING 2.27 LB/FT
 - STORM SEWER EASEMENT
 - L = OUT LOT

NOTE: ALL LINEAR MEASUREMENTS HAVE BEEN MADE TO THE NEAREST 1/16" OF AN INCH. ALL ANGLES TO THE NEAREST MINUTE HAVE BEEN MADE TO THE NEAREST MINUTE. COMPUTED TO THE SECOND.

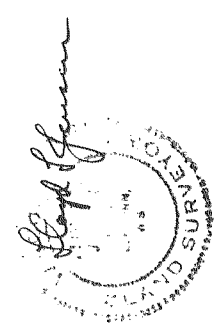
NOTE: CONCRETE MONUMENT FOUND AT THE S1/4 CORNER OF SECTION 13, 5' SQUARE AT THE TOP, 9' SQUARE AT THE BOTTOM, 36" LONG 5" UTILITY EASEMENT



There are no objections to this plat with respect to Sect. 236.15, 236.16, 236.20 and 236.21 (1) and (2), Statute.

Certified this 7th day of January, 1974.

David J. Jensen, P.E.
Director, Regional Planning & Community Assistance
Department of Local Affairs & Development



DATED THIS 7th DAY OF January 1974

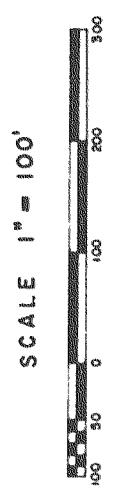
REVISED THIS 28th DAY OF February 1974

REVISED THIS DAY OF DAY OF 1974

CURVE DATA TABLE

CURVE NO.	CHORD BEARING	CHORD LENGTH	CENTRAL ANGLE
1-2	S 40° 23' 58" E	93.34	90° 00'
48	S 6° 23' 02" E	51.61	46° 01' 52"
49	S 22° 23' 02" E	49.41	43° 58' 08"
3-4	S 44° 36' 02" W	93.34	90° 00'
41	N 21° 35' 06" E	49.41	43° 58' 08"
40	N 66° 35' 06" E	51.61	46° 01' 52"
5-6	S 44° 23' 58" E	93.34	90° 00'
22	S 6° 23' 02" E	51.61	46° 01' 52"
21	S 22° 23' 02" E	49.41	43° 58' 08"

UNPLATTED LANDS



SCALE 1" = 100'