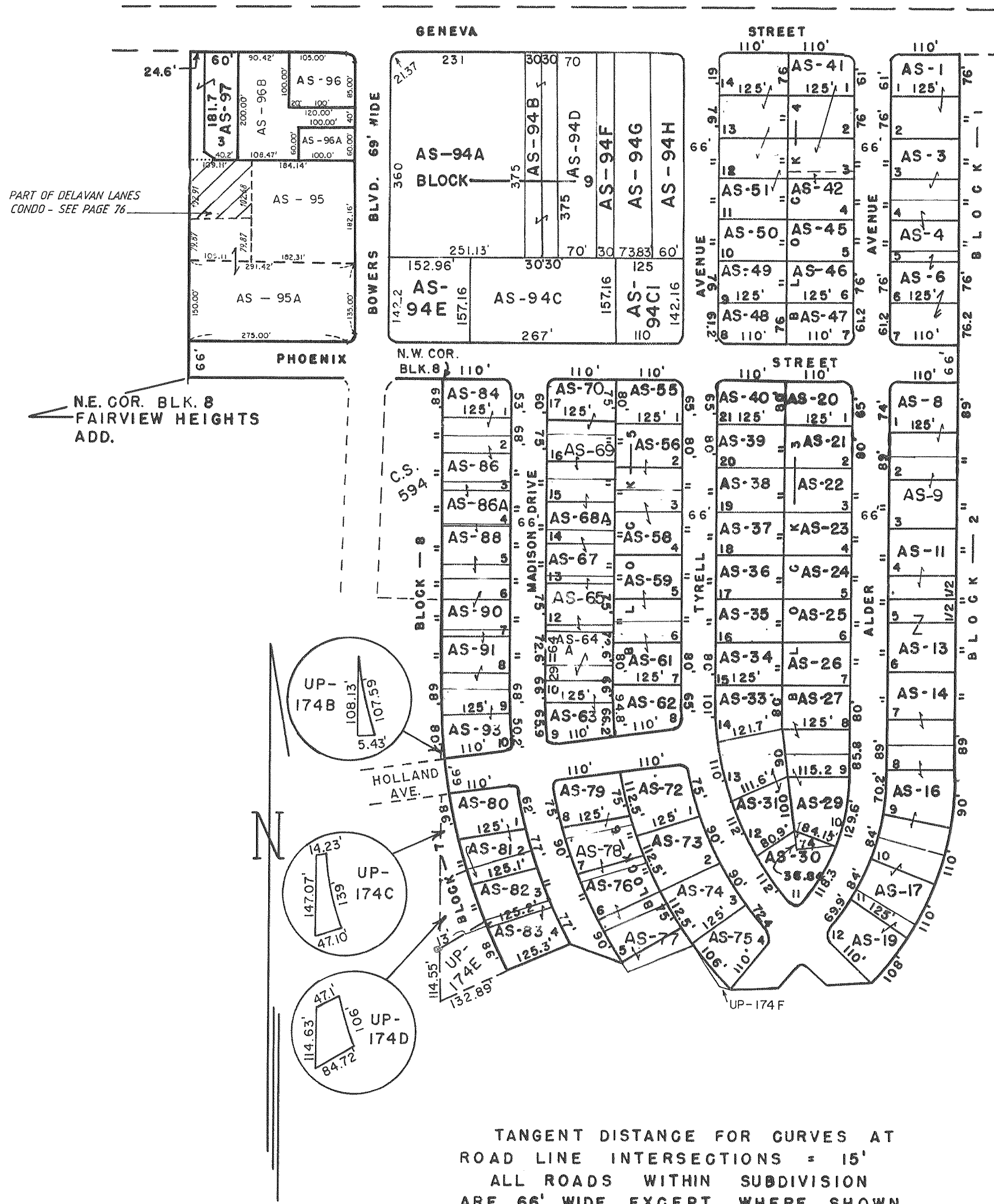


ALLYNHURST SUBDIVISION

SE 1/4 OF THE SW 1/4 AND THE SW 1/4 OF THE SW 1/4 OF SEC. 17
 NW 1/4 OF THE NW 1/4 AND THE NE 1/4 OF THE NW 1/4 OF SEC. 20
 T 2 N R 16 E
 CITY OF DELAVAN



TANGENT DISTANCE FOR CURVES AT
 ROAD LINE INTERSECTIONS = 15'
 ALL ROADS WITHIN SUBDIVISION
 ARE 66' WIDE EXCEPT WHERE SHOWN

SCALE 1" = 200'

REVISIONS : 04/15/92
 06/06/94
 07/06/94