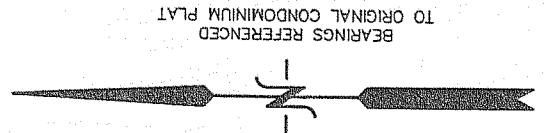
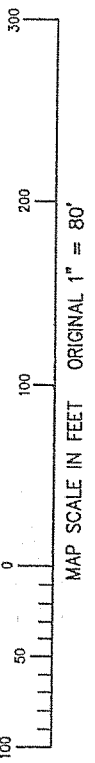
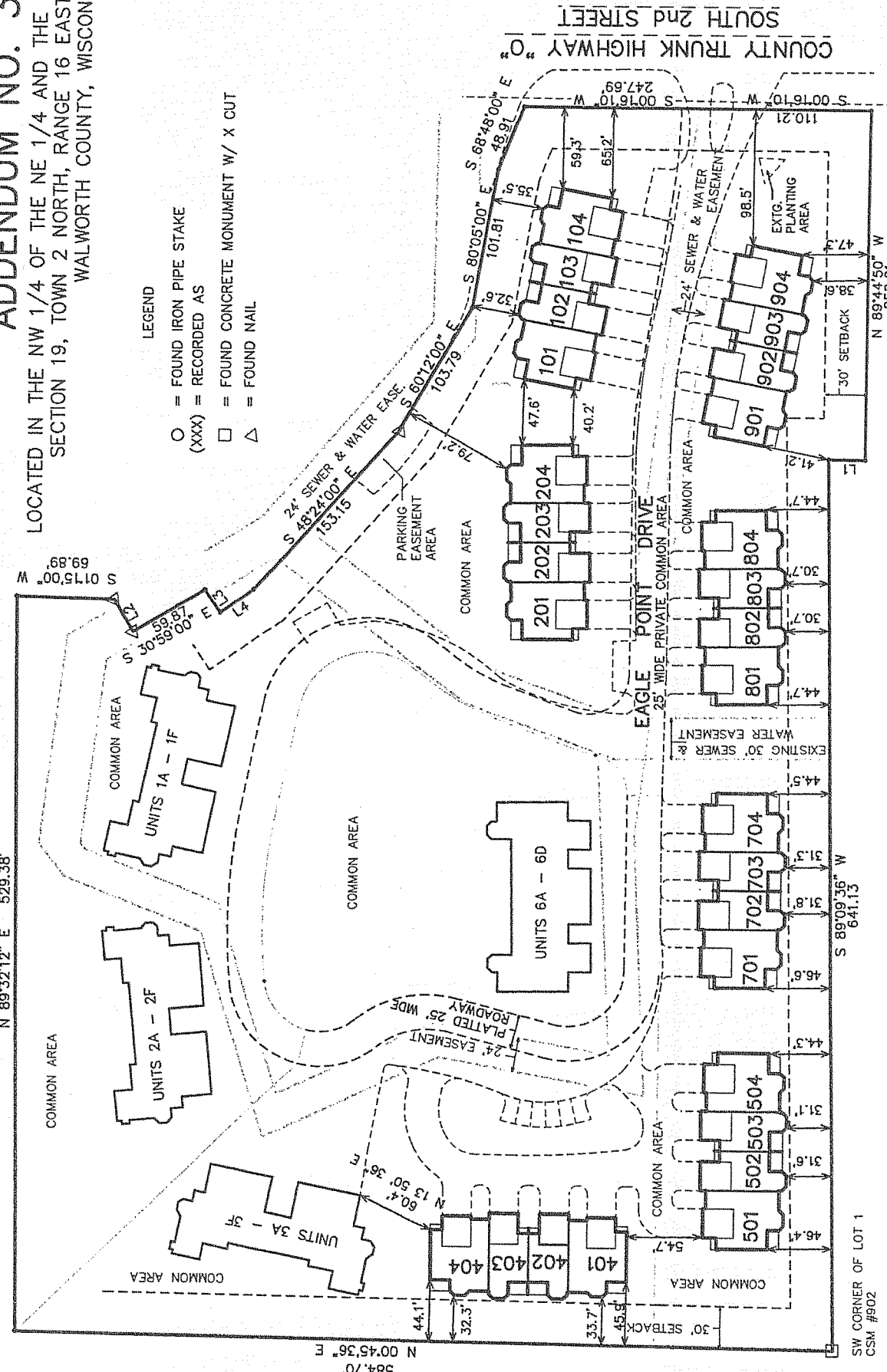


EAGLE POINTE CONDOMINIUM ADDENDUM NO. 3

LOCATED IN THE NW 1/4 OF THE NE 1/4 AND THE NE 1/4 OF THE NW 1/4 OF SECTION 19, TOWN 2 NORTH, RANGE 16 EAST, CITY OF DELAVAN, WALWORTH COUNTY, WISCONSIN



- LEGEND
- = FOUND IRON PIPE STAKE
 - (XXX) = RECORDED AS
 - = FOUND CONCRETE MONUMENT W/ X CUT
 - △ = FOUND NAIL



| LINE | BEARING | DISTANCE |
|------|--------------|----------|
| L1 | N 00°13'22\" | 26.14 |
| L2 | S 89°08'00\" | 27.00 |
| L3 | S 94°51'00\" | 20.00 |
| L4 | S 35°13'00\" | 29.43 |

DECLARANT
DAN FINKE CONSTRUCTION, INC.
5900 CHRISTINE COURT
BURLINGTON, WISCONSIN 53105

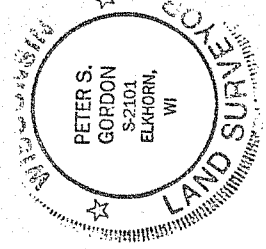
NOTES:
UNITS 1A THRU 1F, 2A THRU 2F, 3A THRU 3F, AND 6A THRU 6D HAVE BEEN PREVIOUSLY PLATTED AND THE FLOOR PLANS FOR SAID UNITS RECORDED IN THE ORIGINAL CONDOMINIUM PLAT AND SUBSEQUENT AMENDMENTS.
UNITS 101 THRU 904 AND THEIR PROPOSED DRIVES AND WALKS REPRESENT PROPOSED CONSTRUCTION NOT EXISTING AS OF THE DATE OF THIS PLAT.

ALL STREETS WITHIN THIS CONDOMINIUM ARE 25 FEET WIDE PRIVATE STREETS AND ARE A PART OF THE COMMON ELEMENTS.
ALL DECKS, BALCONIES, ENTRANCES AND STAIRWAYS, STORAGE AREAS AND THE PARKING SPACE(S) ADJACENT TO EACH GARAGE DOOR ARE LIMITED COMMON AREAS.
ALL OTHER AREAS, EXCEPT THE UNITS (AND LIMITED COMMON ELEMENTS), ARE COMMON AREA.
SEE SHEETS 2 AND 3 FOR TYPICAL BUILDING DIMENSIONS AND FLOOR PLANS.
SEE SHEET 4 FOR LEGAL DESCRIPTION, AND APPROVAL CERTIFICATES.
ABANDONED SILO AND FOUNDATION ON THIS CONDOMINIUM TO BE REMOVED.
STORM SEWER WITHIN CONDOMINIUM TO BE PRIVATE.

I HEREBY CERTIFY THAT THIS PLAT IS A CORRECT REPRESENTATION OF THE CONDOMINIUM DESCRIBED TO THE BEST OF MY PROFESSIONAL KNOWLEDGE AND BELIEF AND THAT THE IDENTIFICATION AND LOCATION OF EACH COMMON ELEMENTS CAN BE DETERMINED FROM THE PLAT. I FURTHER CERTIFY THIS PLAT IS IN COMPLIANCE WITH THE PROVISIONS OF THE SUBDIVISION CONTROL REGULATIONS FOR THE CITY OF DELAVAN, WALWORTH COUNTY, WISCONSIN

DATED: JUNE 25, 2004 *Revised 9-10-2004*

Peter S. Gordon
PETER S. GORDON R.L.S. 2101



FARRIS, HANSEN & ASSOCIATES, INC.
ENGINEERING - ARCHITECTURE - SURVEYING
7 RIDGWAY COURT, PO BOX 437
ELKHORN, WISCONSIN 53121
PHONE: (262) 723-2098
FAX: (262) 723-5886
PROJ. NO. 3557.04 | DATE: 06-25-2004

REVISED 09/09/2004