

# CAMDEN HEIGHTS CONDOMINIUM PLAT

LOTS 4, 5, 6, OUTLOT 3, AND A PART OF LOT 7, WESTBURY SUBDIVISION, TOGETHER WITH LOT 1 AND OUTLOT 1 OF CERTIFIED SURVEY MAP NO. 2544, LOCATED IN THE NW 1/4 OF THE NE 1/4 OF SECTION 24, T 2 N, R 15 E, IN THE CITY OF DELAVAN, WALWORTH COUNTY, WISCONSIN.

### Limited Common Elements (L.C.E.)

Limited Common Elements (L.C.E.) that could not be shown or labeled in a feasible manner are as follows:

- A. The driveway in front of each unit is reserved for the exclusive use of that unit.
- B. The sidewalk leading from the driveway in front of each unit to the entryway of the unit and the entryway itself is reserved for the exclusive use of that unit.
- C. The patio, if any, adjacent to each unit is reserved for the exclusive use of that unit.

### Declarant:

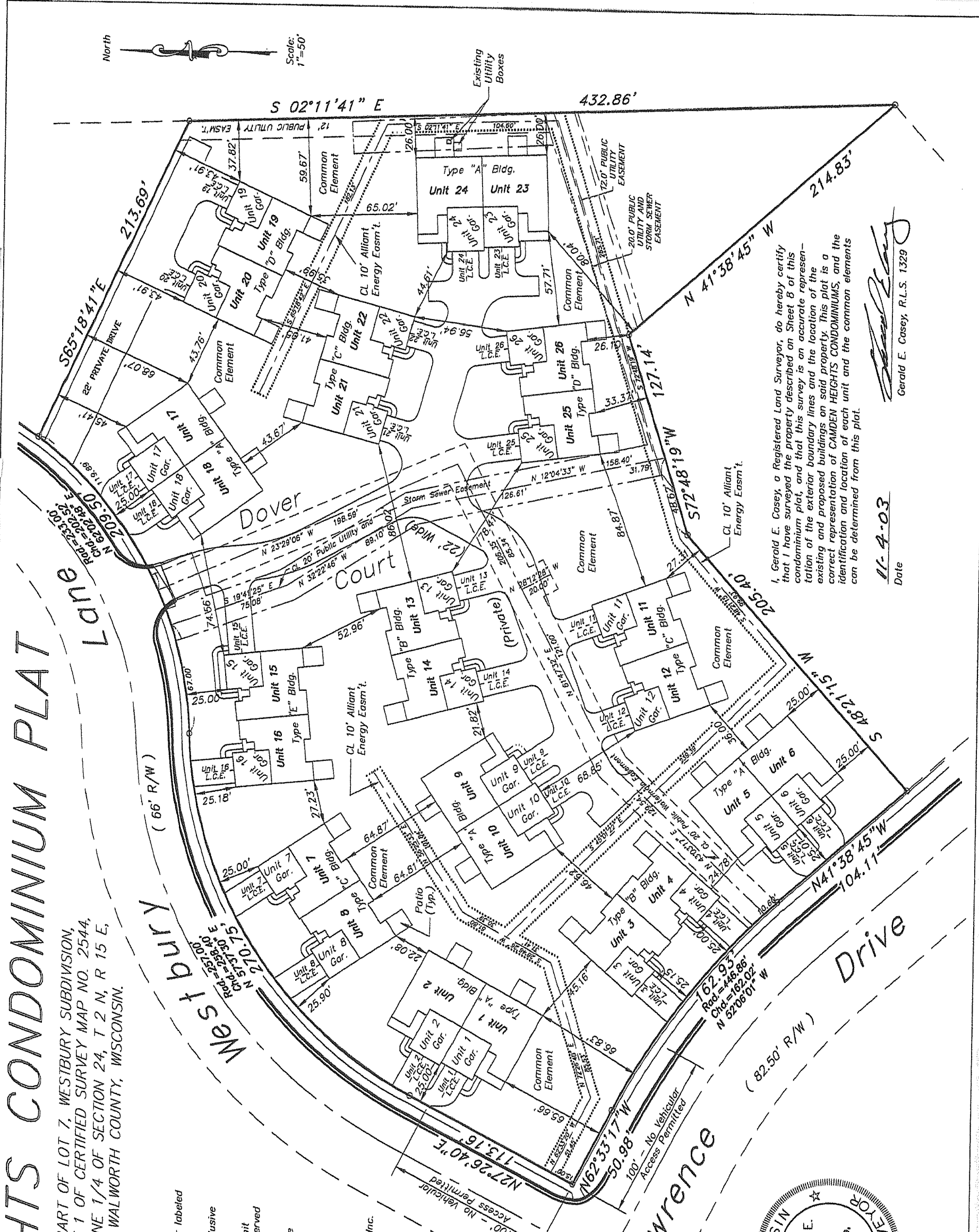
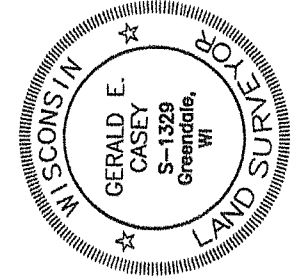
Regency Hills Development Corp.  
5008 Green Bay Road  
Kenosha, WI 53144

### Prepared by:

Gerald E. Casey, R.L.S. 1329  
Metropolitan Survey Service, Inc.  
5200 W. Loomis Rd.  
Greendale, WI 53129

### Easement Legend:

- 20' PUBLIC WATERMAIN EASEMENT
- 20' PUBLIC UTILITY EASEMENT
- 20' PUBLIC STORM SEWER EASEMENT
- 10' ALLIANT ENERGY EASEMENT



I, Gerald E. Casey, a Registered Land Surveyor, do hereby certify that I have surveyed the property described on Sheet B of this condominium plat, and that this survey is an accurate representation of the exterior boundary lines and the location of the existing and proposed buildings on said property. This plat is a correct representation of CAMDEN HEIGHTS CONDOMINIUMS, and the identification and location of each unit and the common elements can be determined from this plat.

11-4-03  
Date

Gerald E. Casey, R.L.S. 1329