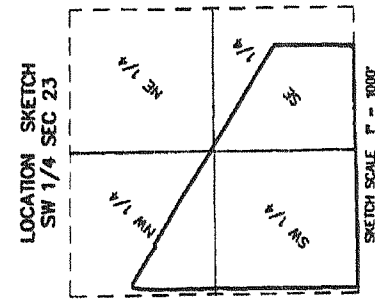


LAKE PRAIRIE BUSINESS PARK

LOCATED IN THE NE 1/4, SE 1/4, SW 1/4, AND NW 1/4 OF THE SW 1/4 OF SECTION 23, T26N, R16E, AND NW 1/4 OF THE SW 1/4 OF SECTION 23, T26N, R16E, EAST, WASHINGTON COUNTY, WISCONSIN, INCLUDING PART OF VACATED COUNTY TRUNK HIGHWAY "F"



- LEGEND
- O - FOUND IRON PIPE STAKE
 - B - FOUND CONCRETE COUNTY MONUMENT WITH/AS CIP
 - - SET SOLID ROUND IRON BAR STAKE 1 3/16" DIA. x 30" x 4.00 lbs/l
 - (XXX) - RECORDED AS
 - D.R.A. - DRIVEWAY RESTRICTED AREA (NO VEHICULAR ACCESS ALLOWED)
 - L.A.A. - LIMITED ACCESS AREA (VEHICULAR ACCESS ALLOWED)
- NOTE: ALL OTHER LOT CORNERS ARE SET BY IRON REBAR STAKES 3/4" DIA. x 24" x 1.50 lbs/l
- NOTE: DISTANCES SHOWN ALONG CURVES REPRESENT ARC DISTANCES

LINE	BEARING	DISTANCE
A-1	S. 01°26'11" E	404.63
A-2	S. 89°27'14" W	150.00
A-3	S. 89°27'14" W	150.00
A-4	S. 89°27'14" W	150.00
A-5	S. 89°27'14" W	150.00
A-6	S. 89°27'14" W	150.00
A-7	S. 01°26'11" E	284.70
A-8	N. 89°27'14" W	45.19
A-9	S. 89°27'14" W	150.00
A-10	N. 01°26'11" E	141.00
A-11	S. 01°26'11" E	243.13
A-12	S. 01°26'11" E	243.13
A-13	S. 01°26'11" E	243.13

There are no objections to this plat with respect to Sects. 236.15, 236.16, 236.20 and 236.21 (1) and (2), Wis. Stats., and ch. Trans 233 of the Wis. Admin. Code as provided by Sec. 236.12 (6), Wis. Stats.

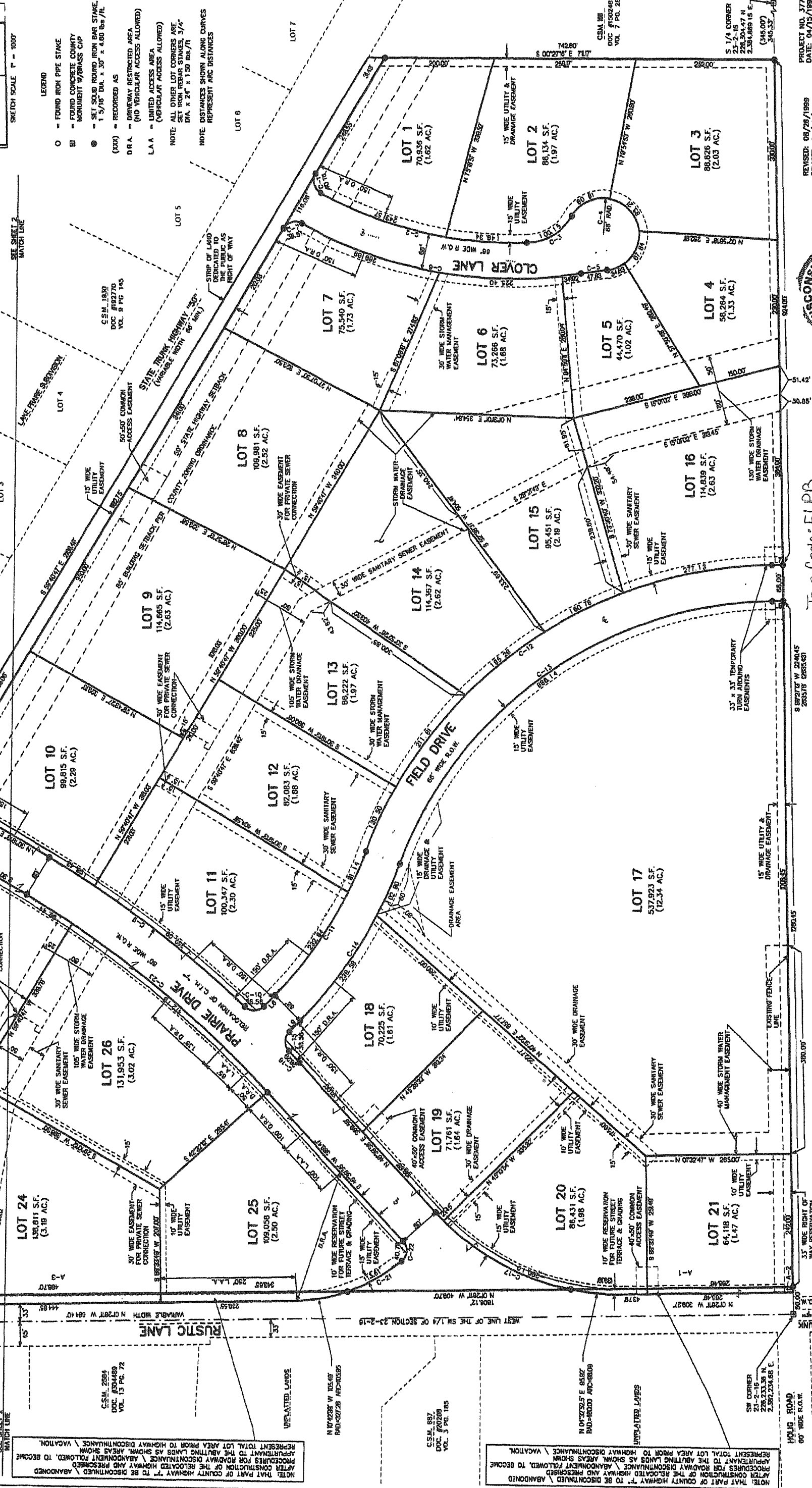
Certified *May 15th 2008*
Kevin M. Ponce
Department of Administration

NOTE: LOTS 7, 10, 11, 12, 13, 14, 15, 16, 17, 18, 19, 20, 21, 24, 25, AND 26 ARE SUBJECT TO A CROSS ACCESS EASEMENT FOR TRAFFIC FROM LOT 22 TO LOTS 23 AND 24 AS SHOWN ON THIS PLAT. THE EASEMENT SHALL BE CONSTRUCTED OVER ANY PARKING AREAS OR DRIVES AS MAY BE CONSTRUCTED ON LOTS 23 AND 24.

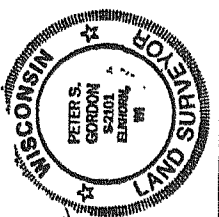
LINE	BEARING	DISTANCE
L1	N. 07°20'11" W	227.9
L2	N. 89°27'14" W	150.00
L3	S. 89°27'14" E	150.00
L4	N. 89°27'14" E	150.00
L5	N. 89°27'14" E	150.00
L6	N. 89°27'14" E	150.00
L7	N. 89°27'14" E	150.00
L8	N. 89°27'14" E	150.00
L9	N. 89°27'14" E	150.00

LOT #	RAW AREA (AC.)	ADJUSTED AREA (AC.)	NET AREA (AC.)	AREA AFTER RESERVE (AC.)
20	102.8	102.8	102.8	102.8
21	285.8	285.8	285.8	285.8
22	158.9	158.9	158.9	158.9
23	175.2	175.2	175.2	175.2

NOTE: THAT PART OF COUNTY HIGHWAY "F" TO BE DISCONTINUED / ABANDONED APPLICABLE TO THE ADJUTING LOTS AS SHOWN AREAS SHOWN. APPLICABLE TO THE ADJUTING LOTS AS SHOWN AREAS SHOWN. APPLICABLE TO THE ADJUTING LOTS AS SHOWN AREAS SHOWN.



PROJECT NO. 3771
DATE: 04/25/1998
SHEET: 1 OF 2
REVISED: 08/28/1998
REVISED: 02/29/2000



Robert Gordon
5/19/99
5/17/2000

Tax Code: FLTPB
UNPLATTED LANDS

AS OWNER I HEREBY RESTRICT ALL LOTS AND BLOCKS SO THAT NO OWNER, POSSESSOR, USER, LESSEE OR OTHER PERSON MAY HAVE ANY RIGHT OF DIRECT VEHICULAR ACCESS FROM OR TO ANY HIGHWAY LINK WITHIN THE SECTION 236.20, WISCONSIN STATUTES, AND SHALL BE ENFORCEABLE BY THE WISCONSIN DEPARTMENT OF TRANSPORTATION OR ITS ASSIGNS. CONTACT THE WISCONSIN DEPARTMENT OF TRANSPORTATION OR ITS ASSIGNS. THE PHONE NUMBER MAY BE OBTAINED BY CONTACTING THE COUNTY HIGHWAY DEPARTMENT.

NO IMPROVEMENTS OR STRUCTURES ARE ALLOWED BETWEEN THE BOUNDARIES OF ANY LOT AND THE HIGHWAY SEABACK LINE. IMPROVEMENTS AND STRUCTURES INCLUDE, BUT ARE NOT LIMITED TO, WELLS, SEPTIC SYSTEMS, DRAINAGE FACILITIES, BUILDINGS AND RETAINING WALLS. IT IS RESTRICTED THAT NO ADJUTING LOTS OR LOTS 23 AND 24 SHALL BE CONSTRUCTED BY THE WISCONSIN DEPARTMENT OF TRANSPORTATION OR ITS ASSIGNS. CONTACT THE WISCONSIN DEPARTMENT OF TRANSPORTATION OR ITS ASSIGNS. THE PHONE NUMBER MAY BE OBTAINED BY CONTACTING THE COUNTY HIGHWAY DEPARTMENT.

NOTE: THAT PART OF COUNTY HIGHWAY "F" TO BE DISCONTINUED / ABANDONED APPLICABLE TO THE ADJUTING LOTS AS SHOWN AREAS SHOWN. APPLICABLE TO THE ADJUTING LOTS AS SHOWN AREAS SHOWN. APPLICABLE TO THE ADJUTING LOTS AS SHOWN AREAS SHOWN.

