

There are no objections to this plat with respect to Secs. 236.15, 236.16, 236.20 and 236.21 (1) and (2), Wis. Stats.

Certified *29th* 2002

Rene M. Pank
Department of Administration

HIGH POINTE

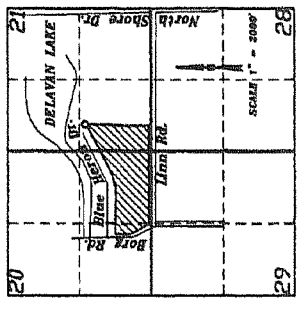
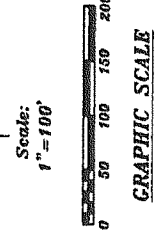
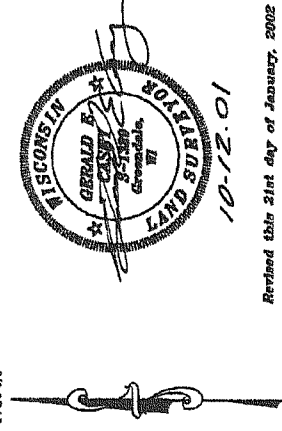
BEING A PART OF THE S.E. 1/4 OF THE S.W. 1/4 OF SECTION 21,
AND OF THE S.E. 1/4 AND THE S.W. 1/4 OF THE S.E. 1/4 OF
SECTION 20, TOWN 2 NORTH, RANGE 16 EAST, IN THE TOWN OF
DELANAY, WALWORTH COUNTY, WISCONSIN.

LOT CURVE DATA

LOT NO.	RADIUS	ARC	CHORD	1/2	CHORD BEARING
1	1053.00'	131.60'	131.60'	131.60'	N 89°42'36.6" E
2	1053.00'	131.60'	131.60'	131.60'	N 89°42'36.6" E
3	1053.00'	131.60'	131.60'	131.60'	N 89°42'36.6" E
4	1053.00'	131.60'	131.60'	131.60'	N 89°42'36.6" E
5	1053.00'	131.60'	131.60'	131.60'	N 89°42'36.6" E
6	1053.00'	131.60'	131.60'	131.60'	N 89°42'36.6" E
7	1053.00'	131.60'	131.60'	131.60'	N 89°42'36.6" E
8	1053.00'	131.60'	131.60'	131.60'	N 89°42'36.6" E
9	1053.00'	131.60'	131.60'	131.60'	N 89°42'36.6" E
10	1053.00'	131.60'	131.60'	131.60'	N 89°42'36.6" E

MAIN CURVE DATA

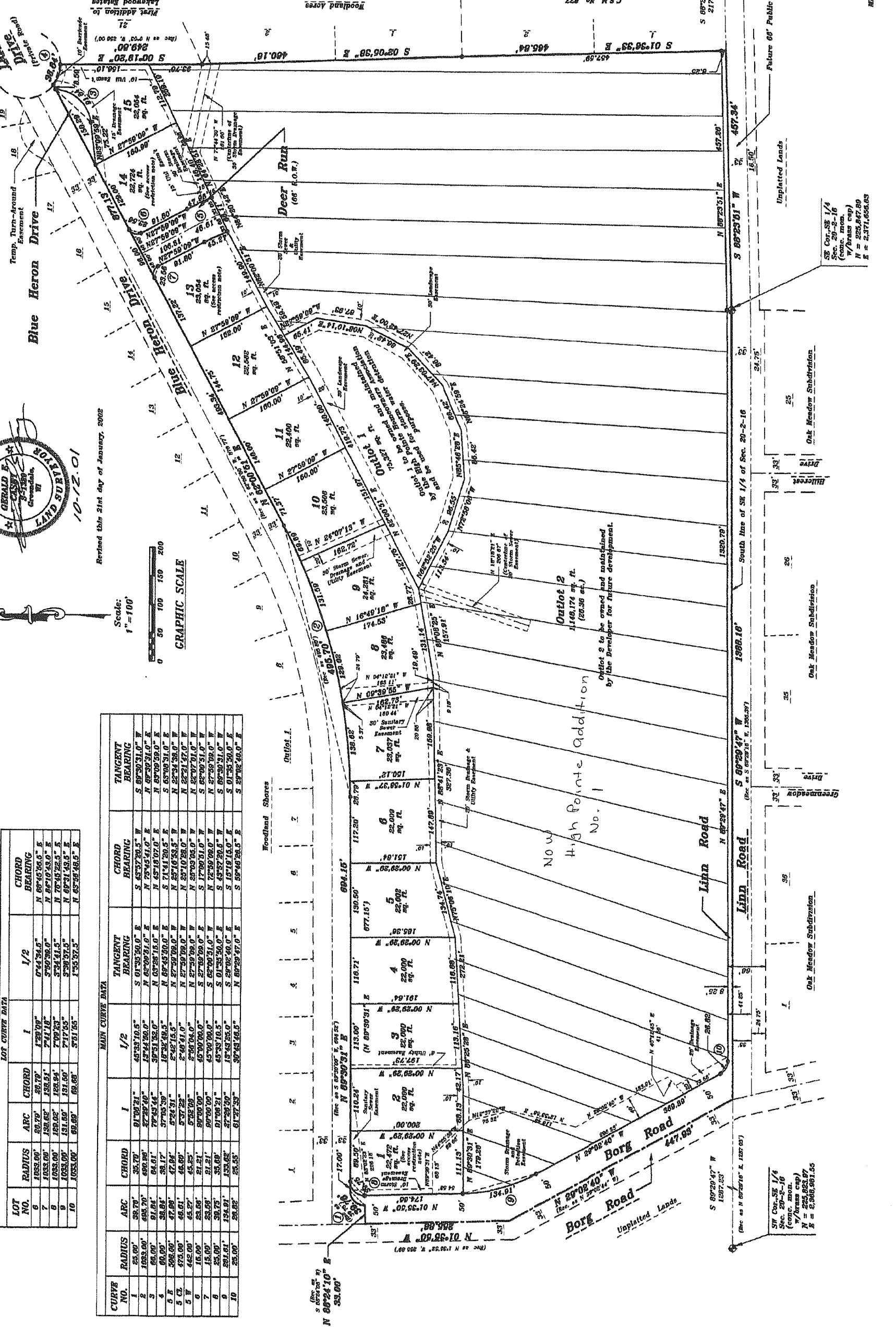
CURVE NO.	RADIUS	ARC	CHORD	TANGENT BEARING	CHORD BEARING	TANGENT BEARING
1	1053.00'	131.60'	131.60'	S 01°36'39.0" W	S 89°42'36.6" W	S 89°42'36.6" W
2	1053.00'	131.60'	131.60'	N 89°42'36.6" E	N 89°42'36.6" E	N 89°42'36.6" E
3	1053.00'	131.60'	131.60'	S 01°36'39.0" W	S 89°42'36.6" W	S 89°42'36.6" W
4	1053.00'	131.60'	131.60'	N 89°42'36.6" E	N 89°42'36.6" E	N 89°42'36.6" E
5	1053.00'	131.60'	131.60'	S 01°36'39.0" W	S 89°42'36.6" W	S 89°42'36.6" W
6	1053.00'	131.60'	131.60'	N 89°42'36.6" E	N 89°42'36.6" E	N 89°42'36.6" E
7	1053.00'	131.60'	131.60'	S 01°36'39.0" W	S 89°42'36.6" W	S 89°42'36.6" W
8	1053.00'	131.60'	131.60'	N 89°42'36.6" E	N 89°42'36.6" E	N 89°42'36.6" E
9	1053.00'	131.60'	131.60'	S 01°36'39.0" W	S 89°42'36.6" W	S 89°42'36.6" W
10	1053.00'	131.60'	131.60'	N 89°42'36.6" E	N 89°42'36.6" E	N 89°42'36.6" E



VICINITY MAP
S.E. 1/4 OF SECTION 20,
S.W. 1/4 OF SECTION 21,
T 2 N. R 16 E

Notes:
Diameter 1-1/4" x 20' No. 10 rebar, 4.39 lbs per lin. ft.
Iron pipe set at all other lot and outlet corners.
(5/4" x 2.25' iron pipe set at all other lot and outlet corners.
and weighs 1.15 lbs per lin. ft.)
All distances measured and computed to the nearest 0.01'
All angles computed to the nearest 0.000001" and
measured to the nearest 0.0001"
All bearings refer to Great North of the Wisconsin State Plane
Co-ordinate System, South Zone, (NAD 1983), with the north
line of the S.W. 1/4 of Sec. 21, T2N, R16E, having an
assumed bearing of S 89°42'31" E.

Temp. Turn-around
Easement



Min. Setbacks:
Front - 50'
Side - 10'/15'
Rear - 50'

Vehicle Access Restrictions:
Lot 1 shall be restricted to no vehicular
access to Blue Heron Drive within 50 feet of the
right-of-way of Borg Road.
Lots 13 and 14 shall be restricted to no
vehicular access to Blue Heron Drive within
50 feet of the right-of-way of Borg Road.
Lots 13 and 14 shall be restricted to no
vehicular access to Blue Heron Drive within
50 feet of the right-of-way of Borg Road.

SE Cor. SW 1/4
Sec. 21-2-16
(w/Name cap)
N = 253,821.05
E = 2,374,297.06

SW Cor. SE 1/4
Sec. 20-2-16
(w/Name cap)
N = 252,847.89
E = 2,371,656.69

Metropolitan Survey Service, Inc.
5500 W. Lincoln Road
Greendale, Wisconsin 53129
Phone (414) 559-5380

THIS INSTRUMENT WAS DRAFTED BY GERALD E. CASBY S-1329

F:\Plat\2164\Platman\HighPointe.dwg