

SECOND ADDENDUM TO GENEVA LANDINGS ON DELAVAN LAKE CONDOMINIUM LOCATION AND IDENTIFICATION OF BUILDINGS AND UNITS ON JEFFERSON AND NEWBURY LANES

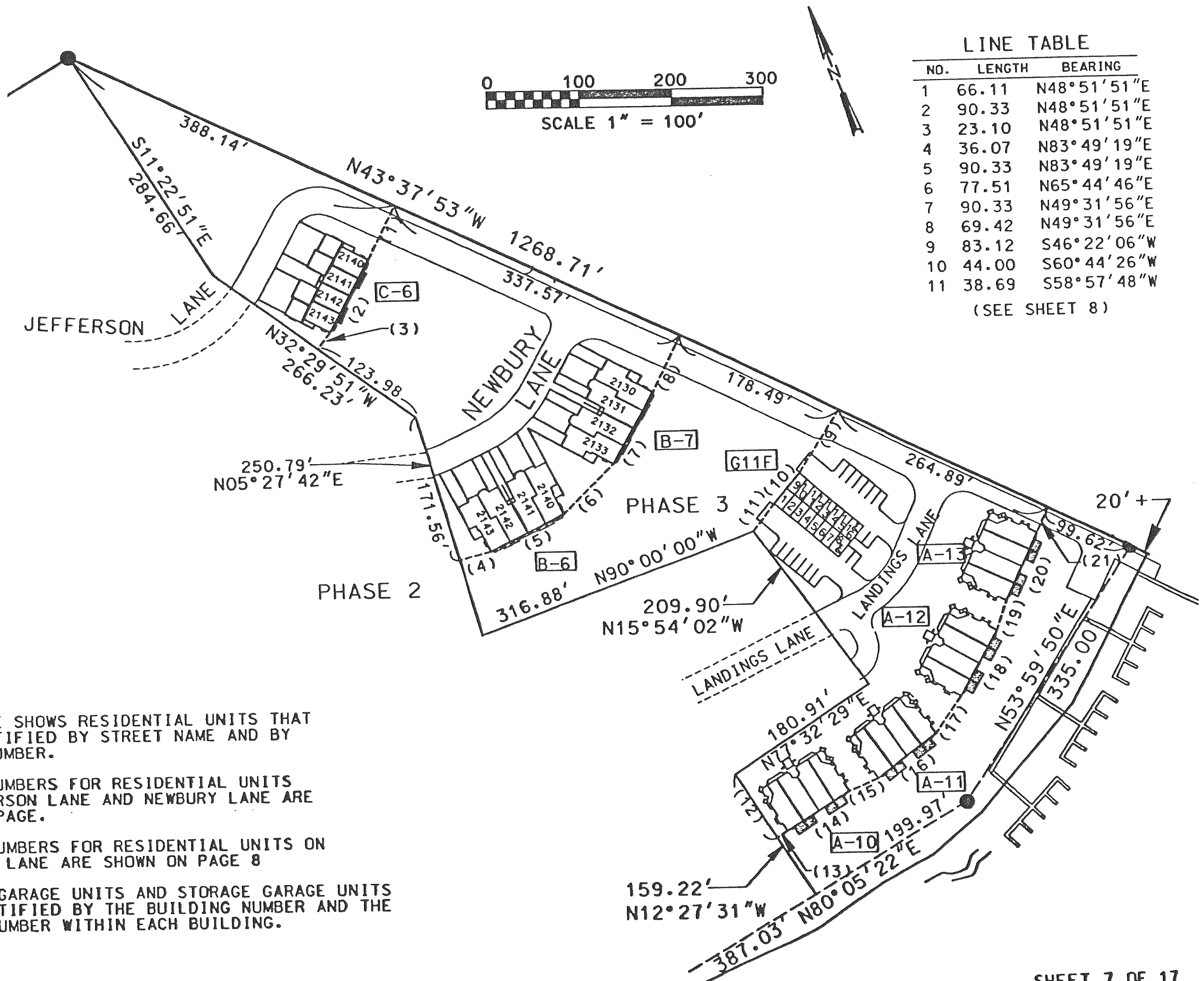
88F

BUILDING NUMBER LEGEND

[C-1] TWO-CHARACTER BUILDING NUMBERS IDENTIFY BUILDINGS CONTAINING RESIDENTIAL UNITS. THE FIRST CHARACTER DESIGNATES THE BUILDING STYLE.

[S1A]
[G4F] THREE-CHARACTER BUILDING NUMBERS IDENTIFY BUILDINGS CONTAINING PARKING GARAGE UNITS AND STORAGE GARAGE UNITS. THE CHARACTER IS "G" FOR PARKING GARAGE UNIT BUILDING OR "S" FOR STORAGE GARAGE UNIT BUILDING. THE THIRD CHARACTER DESIGNATES THE BUILDING STYLE.

TOWN OF DELAVAN,
WALWORTH COUNTY, WISCONSIN.



LINE TABLE

NO.	LENGTH	BEARING
1	66.11	N48°51'51"E
2	90.33	N48°51'51"E
3	23.10	N48°51'51"E
4	36.07	N83°49'19"E
5	90.33	N83°49'19"E
6	77.51	N65°44'46"E
7	90.33	N49°31'56"E
8	69.42	N49°31'56"E
9	83.12	S46°22'06"W
10	44.00	S60°44'26"W
11	38.69	S58°57'48"W

(SEE SHEET 8)

THIS PAGE SHOWS RESIDENTIAL UNITS THAT ARE IDENTIFIED BY STREET NAME AND BY STREET NUMBER.

STREET NUMBERS FOR RESIDENTIAL UNITS ON JEFFERSON LANE AND NEWBURY LANE ARE ON THIS PAGE.

STREET NUMBERS FOR RESIDENTIAL UNITS ON LANDINGS LANE ARE SHOWN ON PAGE 8

PARKING GARAGE UNITS AND STORAGE GARAGE UNITS ARE IDENTIFIED BY THE BUILDING NUMBER AND THE GARAGE NUMBER WITHIN EACH BUILDING.