

# SECOND ADDENDUM TO GENEVA LANDINGS ON DELAVAN LAKE CONDOMINIUM EASEMENTS

TOWN OF DELAVAN, WALWORTH COUNTY, WISCONSIN.

### WETLAND RESTRICTIONS

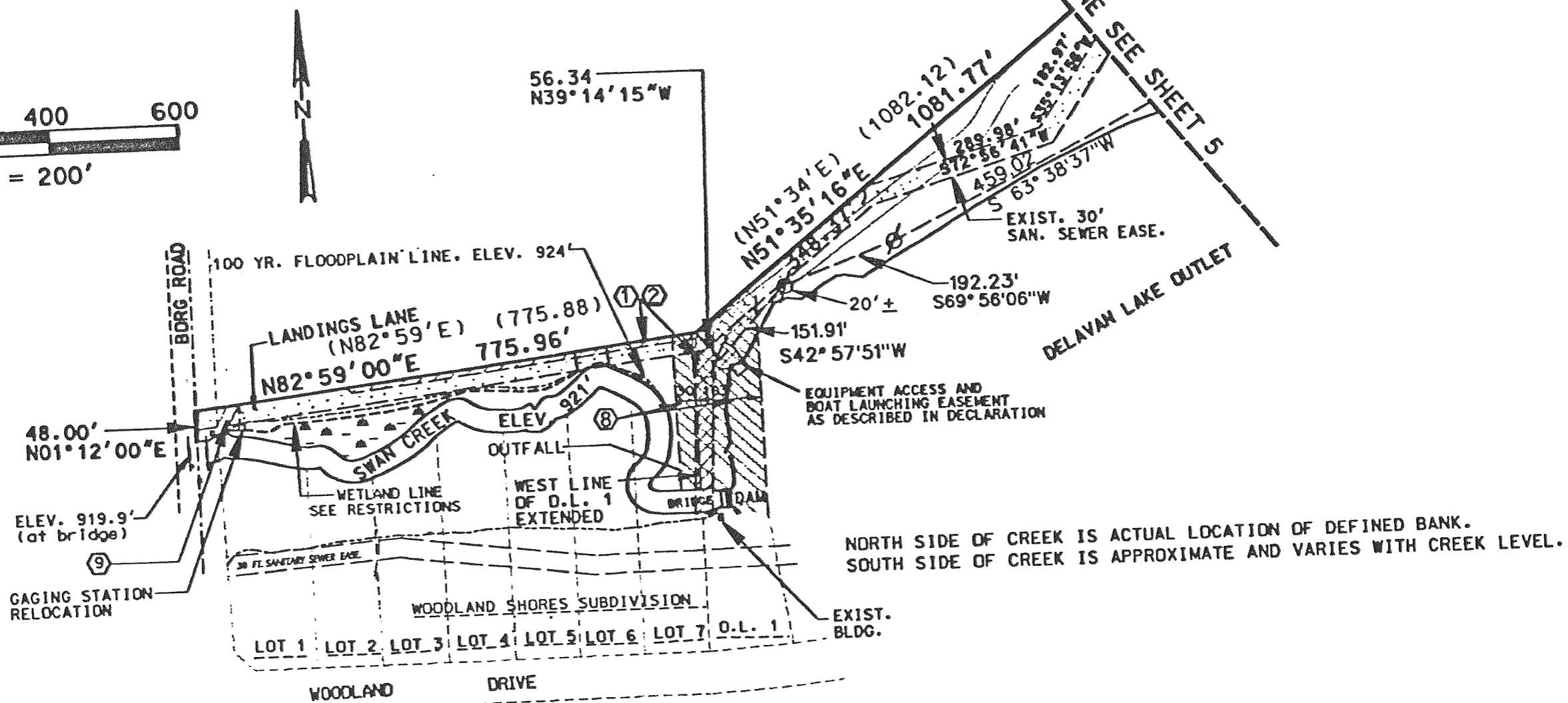
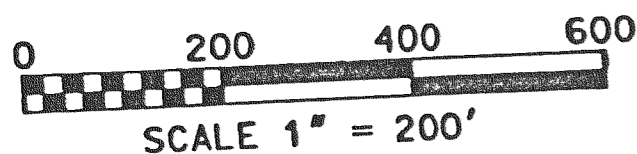
THE DESIGNATED WETLANDS RESTRICTIONS AREA ("THE WETLANDS") ON THE CONDOMINIUM PROPERTY ARE SUBJECT TO THE JURISDICTION OF THE U.S. ARMY CORP OF ENGINEERS AND THE STATE OF WISCONSIN DEPARTMENT OF NATURAL RESOURCES AND HAVE BEEN PLACED IN THE CONSERVANCY ZONING DISTRICT BY WALWORTH COUNTY. ANY IMPROVEMENTS OR FILLING WITHIN THE WETLANDS ARE SUBJECT TO THE TERMS AND CONDITIONS OF THE WETLANDS FILL PERMITS ISSUED MAY 24, 1995, BY THE U.S. ARMY CORPS OF ENGINEERS AND MARCH 16, 1995, BY THE STATE OF WISCONSIN DEPARTMENT OF NATURAL RESOURCES.

THE WETLANDS ARE SUBJECT TO THE FOLLOWING RESTRICTIONS:

- EXCEPT FOR PEDESTRIAN WALKWAYS, THERE SHALL BE NO CONSTRUCTION PERMITTED IN THE WETLANDS, AND NO BUILDINGS, PLAY EQUIPMENT, ANIMAL ENCLOSURES, FENCES, STRUCTURES OR OTHER IMPROVEMENT OF ANY KIND SHALL BE PLACED, ERECTED OR PERMITTED TO REMAIN IN, ON OR ACROSS THE WETLANDS.
  - EXCEPT AS IS NECESSARY TO REMOVE OR ABATE DISEASE OR INFESTATIONS OR FOR SAFETY PURPOSES OR IN KEEPING WITH GOOD FOREST HUSBANDRY PRACTICES, THERE SHALL BE NO REMOVAL, DESTRUCTION OR CUTTING OF TREES OR PLANTS, NO PLANTING OF TREES OR PLANTS OTHER THAN NATIVE TREES OR PLANTS CHARACTERISTIC OF THE WETLANDS, NO SPRAYING WITH HERBICIDES AND/OR BIOCIDES AND NO DISTURBANCE OR CHANGE IN THE NATURAL HABITAT IN ANY MANNER IN, ON, OVER AND ACROSS THE WETLANDS.
  - EXCEPT FOR THE MAINTENANCE AND/OR IMPROVEMENTS FOR LANDINGS LANE, BORG ROAD, THE STREAM GAGING STATION, AND COMPONENTS OF THE SANITARY SEWER AND STORM WATER SYSTEMS LOCATED WITHIN THE BOUNDARIES OF THE WETLANDS, THERE SHALL BE NO FILLING, EXCAVATING, REMOVAL OF MATERIALS OR CHANGE IN THE TOPOGRAPHY OF THE LAND IN ANY MANNER IN, ON, OVER AND ACROSS THE WETLANDS.
  - EXCEPT FOR THE MAINTENANCE AND/OR IMPROVEMENTS DESCRIBED IN PARAGRAPH 3 ABOVE, THERE SHALL BE NO MANIPULATION OR ALTERATION OF THE MATERIAL WATERCOURSE OF SWAN CREEK AND ITS BANKS, AND THERE SHALL BE NO DISCHARGES, ACTIVITIES, OR USES DETRIMENTAL TO WATER PURITY IN, ON, OVER AND ACROSS THE WETLANDS.
  - THERE SHALL BE NO OPERATION OF SNOWMOBILES, ALL-TERRAIN VEHICLES OR ANY OTHER TYPES OF MOTOR-PROPELLED OR SELF-PROPELLED EQUIPMENT IN, ON, OVER AND ACROSS THE WETLANDS.
- IN NO CASE SHALL THE WETLANDS RESTRICTIONS BE INTERPRETED OR CONSTRUED TO GRANT THE PUBLIC ANY USE OF, OR ACCESS TO, THE WETLANDS.

### LEGEND

( )	RECORDED AS
Ⓢ	EASEMENT NO. (SEE TABLE)
⋯	EXISTING SAN. EASE.
▨	EXIST EASE. (SEE TABLE)
▧	ARCHAEOLOGICAL AREA SUBJECT TO RESTRICTIONS
▲	WETLANDS (SEE RESTRICTIONS)



NORTH SIDE OF CREEK IS ACTUAL LOCATION OF DEFINED BANK.  
SOUTH SIDE OF CREEK IS APPROXIMATE AND VARIES WITH CREEK LEVEL.