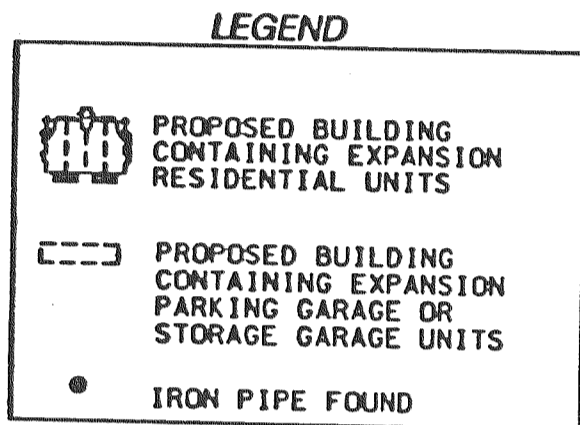


SECOND ADDENDUM TO GENEVA LANDINGS ON DELAVAN LAKE CONDOMINIUM PHASE THREE

BEING LOCATED IN PART OF THE SW 1/4 AND SE 1/4 OF THE NW 1/4 AND PART OF THE NW 1/4 AND NE 1/4 OF THE SW 1/4 OF SECTION 21, AND PART OF THE NE 1/4 AND SE 1/4 OF THE SE 1/4 OF SECTION 20, TOWN 2 NORTH, RANGE 16 EAST, TOWN OF DELAVAN, WALWORTH COUNTY, WISCONSIN.



LEGAL DESCRIPTION OF PHASE THREE

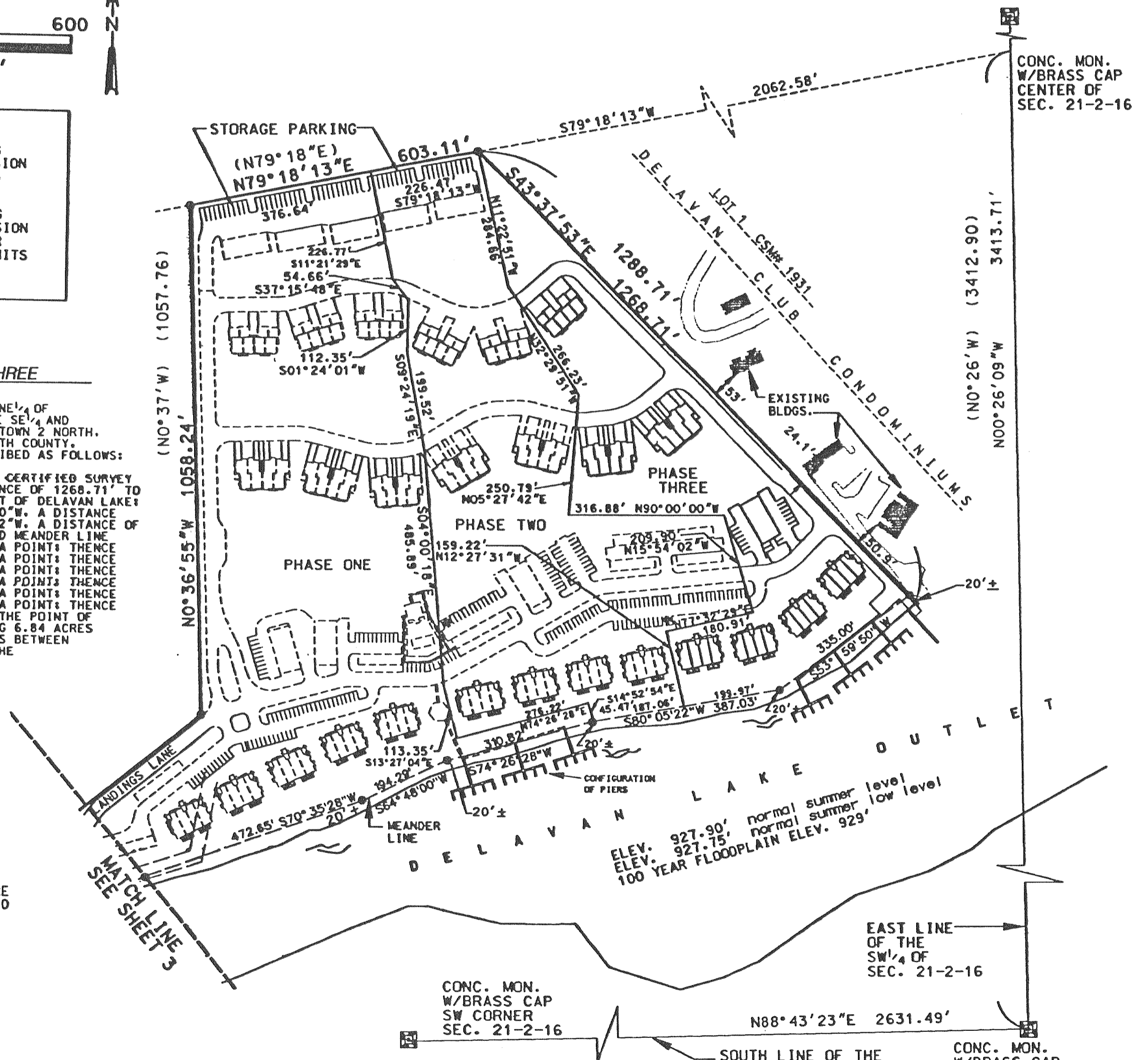
BEING PART OF THE SW 1/4 OF THE NW 1/4 AND NE 1/4 OF THE SW 1/4 OF SECTION 21, AND PART OF THE SE 1/4 AND SW 1/4 OF THE SE 1/4 OF SECTION 20, ALL IN TOWN 2 NORTH, RANGE 16 EAST, TOWN OF DELAVAN, WALWORTH COUNTY, WISCONSIN, AND MORE PARTICULARLY DESCRIBED AS FOLLOWS:

BEGINNING AT THE NW CORNER OF LOT 4 OF CERTIFIED SURVEY MAP #1931; THENCE S43°37'53"E, A DISTANCE OF 1268.71' TO A POINT ON A MEANDER LINE OF THE OUTLET OF DELAVAN LAKE; THENCE WITH SAID MEANDER LINE S53°59'50"W, A DISTANCE OF 335.00' TO A POINT; THENCE S80°05'22"W, A DISTANCE OF 199.97' TO A POINT; THENCE LEAVING SAID MEANDER LINE N12°27'31"W, A DISTANCE OF 159.22' TO A POINT; THENCE N77°32'29"E, A DISTANCE OF 180.91' TO A POINT; THENCE N15°54'02"W, A DISTANCE OF 209.90' TO A POINT; THENCE N90°00'00"W, A DISTANCE OF 316.88' TO A POINT; THENCE N05°27'42"E, A DISTANCE OF 250.79' TO A POINT; THENCE N32°29'51"W, A DISTANCE OF 266.23' TO A POINT; THENCE N11°22'51"W, A DISTANCE OF 284.66' TO THE POINT OF BEGINNING. SAID PHASE THREE CONTAINING 6.84 ACRES MORE OR LESS; ALSO INCLUDING ALL LANDS BETWEEN MEANDER CORNERS AND THE SHORELINE OF THE OUTLET OF DELAVAN LAKE.

BASIS OF BEARING—
THE EAST LINE OF THE
SW 1/4 OF SEC. 21-2-16
WAS TAKEN TO BEAR
N00°26'09"W

OWNER:
GENEVA LANDINGS JOINT VENTURE
704 MAIN STREET, P.O. BOX 460
LAKE GENEVA, WI 53147

SURVEYOR:
R.S.V. ENGINEERING, INC.
801 MAIN ST.
MUKWONAGO, WI 53149
(414) 363-2004



ELEV. 927.90' normal summer level
ELEV. 927.75' normal summer low level
100 YEAR FLOODPLAIN ELEV. 929'