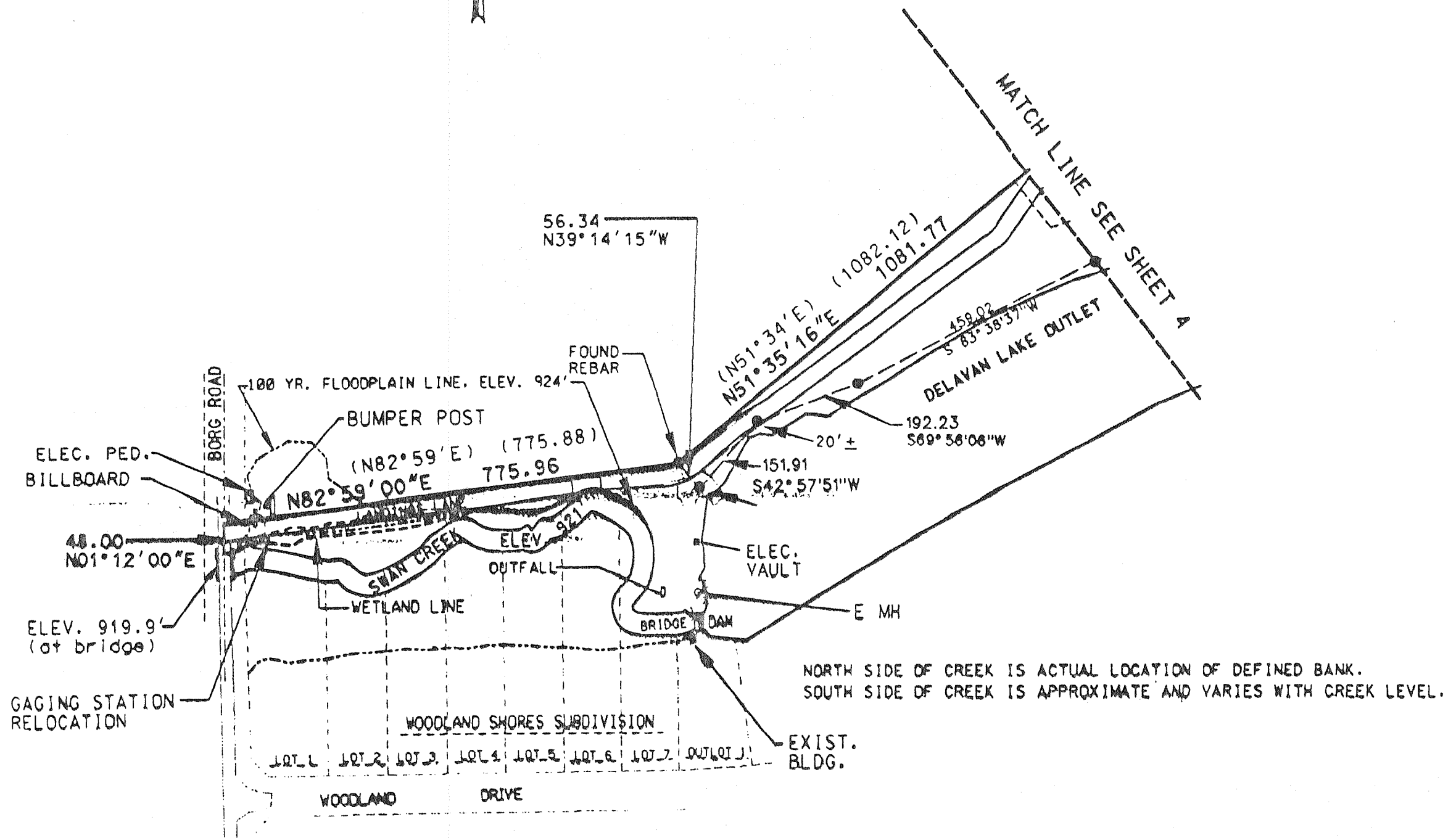
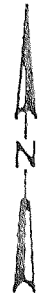
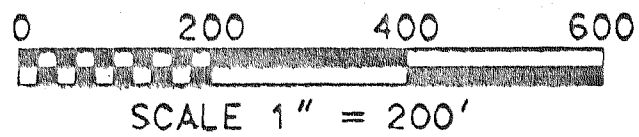


FIRST AMENDMENT TO GENEVA LANDINGS ON DELAVAN LAKE CONDOMINIUM PHASE ONE

BEING LOCATED IN PART OF THE SW 1/4 AND SE 1/4 OF THE NW 1/4 AND
PART OF THE NW 1/4 AND NE 1/4 OF THE SW 1/4 OF SECTION 21, AND PART OF
THE NE 1/4 AND SE 1/4 OF THE SE 1/4 OF SECTION 20, TOWN 2 NORTH, RANGE 16 EAST,
TOWN OF DELAVAN, WALWORTH COUNTY, WISCONSIN.



REVISIONS :