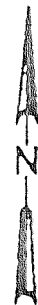
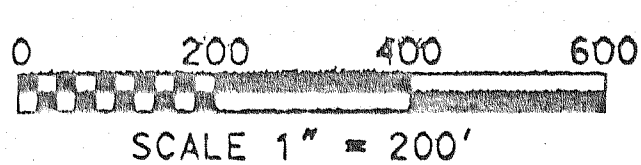


# FIRST AMENDMENT TO GENEVA LANDINGS ON DELAVAN LAKE CONDOMINIUM SURVEY OF PROPERTY

BEING LOCATED IN PART OF THE SW 1/4 AND SE 1/4 OF THE NW 1/4 AND PART OF THE NW 1/4 AND NE 1/4 OF THE SW 1/4 OF SECTION 21, AND PART OF THE NE 1/4 AND SE 1/4 OF THE SE 1/4 OF SECTION 20, TOWN 2 NORTH, RANGE 16 EAST, TOWN OF DELAVAN, WALWORTH COUNTY, WISCONSIN.



OWNER:  
GENEVA LANDINGS JOINT VENTURE  
704 MAIN STREET, P.O. BOX 460  
LAKE GENEVA, WI 53147

SURVEYOR:  
R.S.V. ENGINEERING, INC.  
545 BAY VIEW ROAD  
MUKWONAGO, WI 53149  
(414) 363-2004

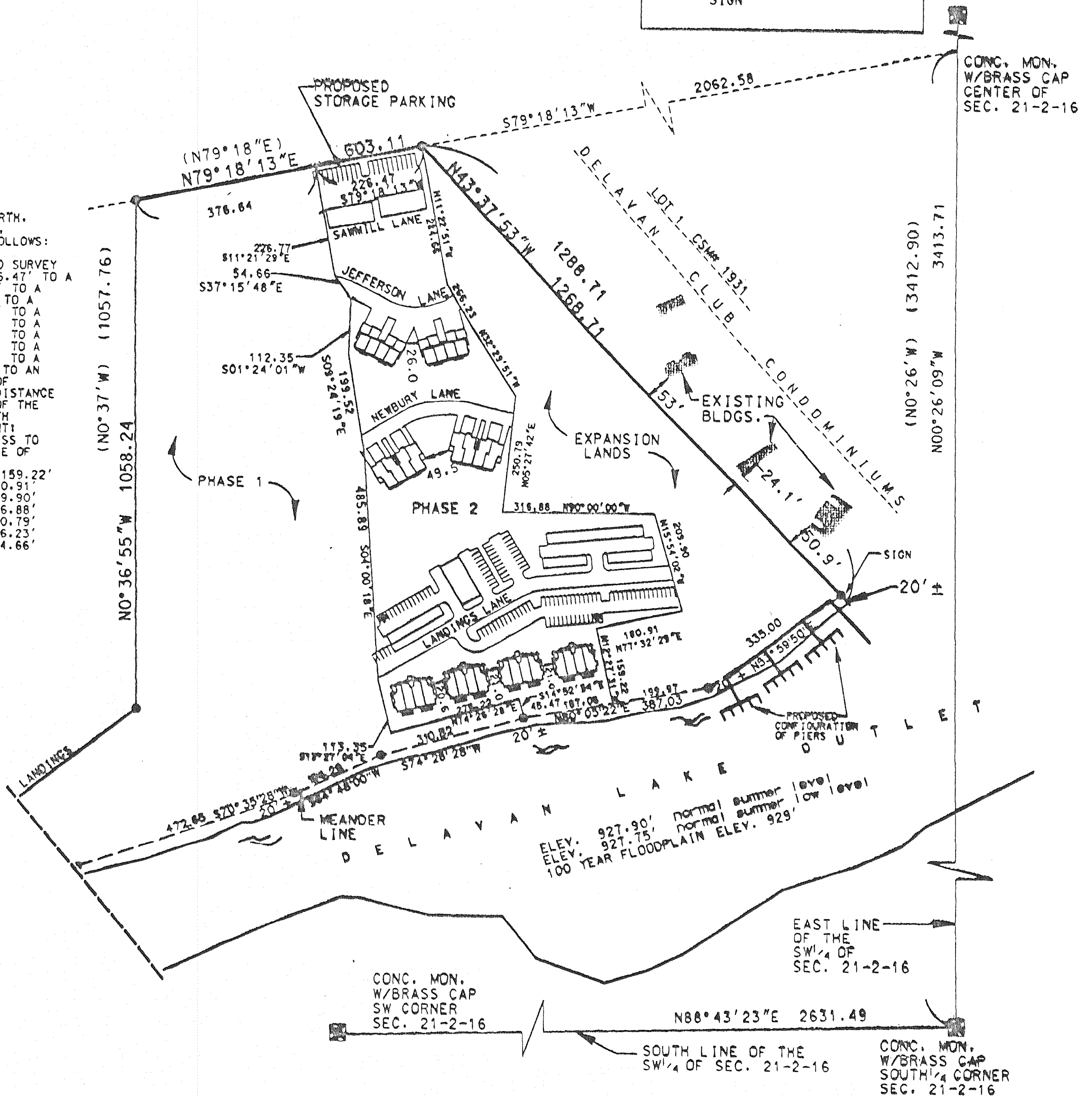
BASIS OF BEARING-  
THE EAST LINE OF THE  
SW 1/4 OF SEC. 21-2-16  
WAS TAKEN TO BEAR  
N00°26'09"W

### LEGEND

	CONDOMINIUM BLDG.
	PARKING GARAGE/ STORAGE GARAGE
	PIER & BOAT SLIPS
	IRON PIPE FOUND
	RECORDED AS
	WATER VALVE SIGN

### LEGAL DESCRIPTION OF PHASE TWO

BEING PART OF THE SW 1/4 OF THE NW 1/4 AND NE 1/4 OF THE SW 1/4 OF SECTION 21, AND PART OF THE SE 1/4 AND SW 1/4 OF THE SE 1/4 OF SECTION 20, ALL IN TOWN 2 NORTH, RANGE 16 EAST, TOWN OF DELAVAN, WALWORTH COUNTY, WISCONSIN, AND MORE PARTICULARLY DESCRIBED AS FOLLOWS:  
BEGINNING AT THE NW CORNER OF LOT 1 OF CERTIFIED SURVEY MAP #19311; THENCE S79°18'13"W, A DISTANCE OF 226.47' TO A POINT; THENCE S11°21'29"E, A DISTANCE OF 226.77' TO A POINT; THENCE S37°15'48"E, A DISTANCE OF 54.66' TO A POINT; THENCE S01°24'01"W, A DISTANCE OF 112.35' TO A POINT; THENCE S09°24'19"E, A DISTANCE OF 199.52' TO A POINT; THENCE S04°00'18"E, A DISTANCE OF 485.89' TO A POINT; THENCE S13°27'04"E, A DISTANCE OF 113.35' TO A POINT; THENCE N74°26'28"E, A DISTANCE OF 276.22' TO A POINT; THENCE S14°52'54"E, A DISTANCE OF 45.47' TO AN IRON PIPE BEING A MEANDER CORNER ON THE OUTLET OF DELAVAN LAKE; THENCE CONTINUING S14°52'54"E, A DISTANCE OF 20' MORE OR LESS TO THE NORTHERLY SHORELINE OF THE OUTLET OF DELAVAN LAKE; THENCE NORTHEASTERLY WITH THE NORTHERLY SHORELINE OF SAID OUTLET TO A POINT; THENCE N12°27'31"W, A DISTANCE OF 20' MORE OR LESS TO A POINT, SAID POINT BEING N80°05'22"E, A DISTANCE OF 187.06' FROM PREVIOUSLY MENTIONED IRON PIPE ON MEANDER LINE; THENCE N12°27'31"W, A DISTANCE OF 159.22' TO A POINT; THENCE N77°32'29"E, A DISTANCE OF 180.91' TO A POINT; THENCE N15°54'02"W, A DISTANCE OF 209.90' TO A POINT; THENCE N90°00'00"W, A DISTANCE OF 316.88' TO A POINT; THENCE N05°27'42"E, A DISTANCE OF 250.79' TO A POINT; THENCE N32°29'51"W, A DISTANCE OF 266.23' TO A POINT; THENCE N11°22'51"W, A DISTANCE OF 284.66' TO THE POINT OF BEGINNING, SAID PARCEL CONTAINING 9.800 ACRES MORE OR LESS AND INCLUDES ALL LANDS BETWEEN MEANDER CORNERS AND THE SHORELINE OF THE OUTLET OF DELAVAN LAKE.



REVISIONS :