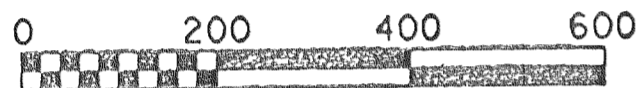


GENEVA LANDINGS ON DELAVAN LAKE CONDOMINIUM

BEING LOCATED IN PART OF THE SW 1/4 AND SE 1/4 OF THE NW 1/4 AND PART OF THE NW 1/4 AND NE 1/4 OF THE SW 1/4 OF SECTION 21, AND PART OF THE NE 1/4 AND SE 1/4 OF THE SE 1/4 OF SECTION 20, TOWN 2 NORTH, RANGE 16 EAST, TOWN OF DELAVAN, WALWORTH COUNTY, WISCONSIN.

EXPANSION LANDS

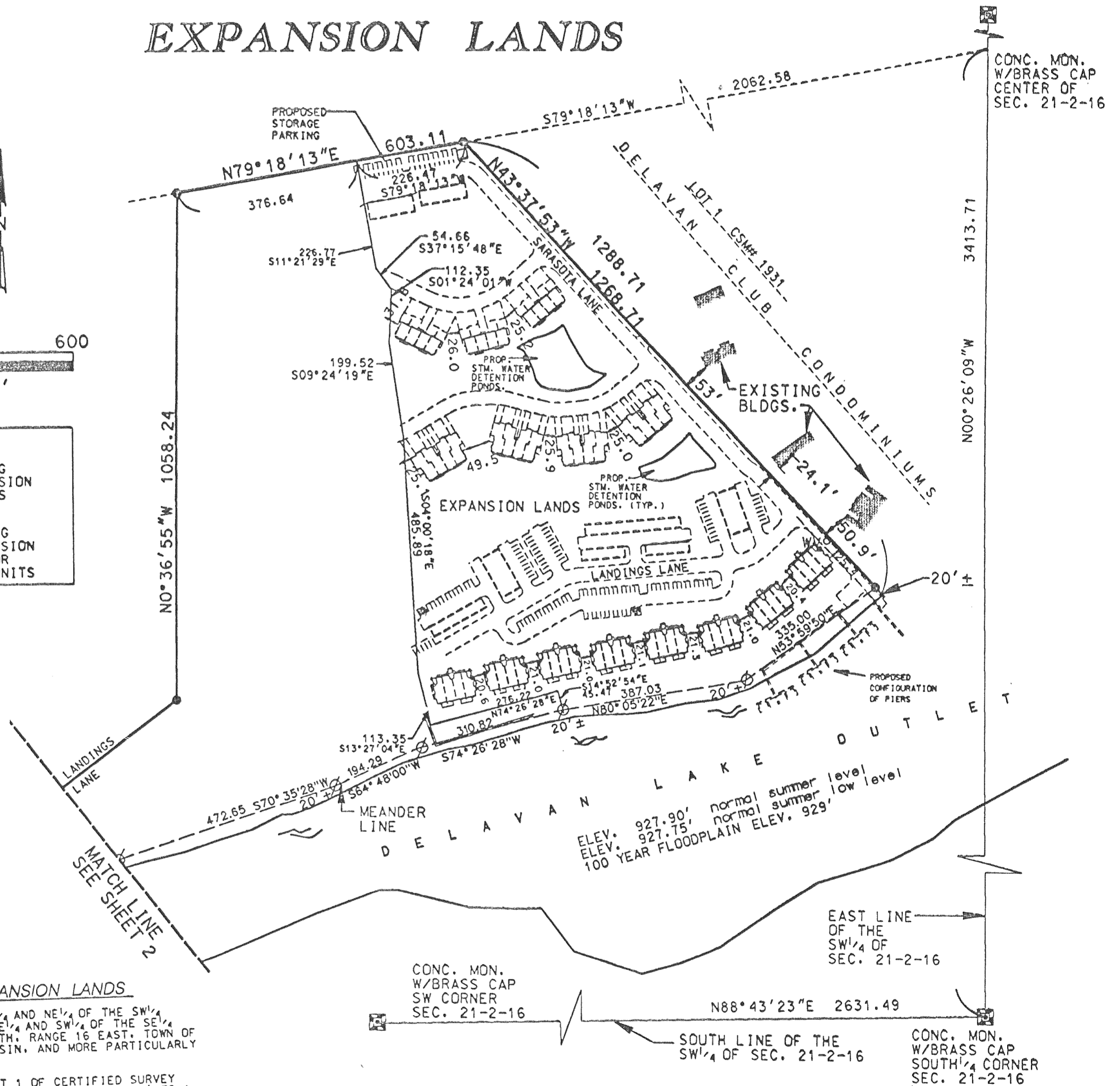
BASIS OF BEARING—
THE EAST LINE OF THE
SW 1/4 OF SEC. 21-2-16
WAS TAKEN TO BEAR
N00°26'09"W



SCALE 1" = 200'

LEGEND

	PROPOSED BUILDING CONTAINING EXPANSION RESIDENTIAL UNITS
	PROPOSED BUILDING CONTAINING EXPANSION PARKING GARAGE OR STORAGE GARAGE UNITS



LEGAL DESCRIPTION OF EXPANSION LANDS

BEING PART OF THE SW 1/4 OF THE NW 1/4 AND NE 1/4 OF THE SW 1/4 OF SECTION 21, AND PART OF THE SE 1/4 AND SW 1/4 OF THE SE 1/4 OF SECTION 20, ALL IN TOWN 2 NORTH, RANGE 16 EAST, TOWN OF DELAVAN, WALWORTH COUNTY, WISCONSIN, AND MORE PARTICULARLY DESCRIBED AS FOLLOWS:

BEGINNING AT THE NW CORNER OF LOT 1 OF CERTIFIED SURVEY MAP #1931; THENCE S79°18'13"W, A DISTANCE OF 226.47' TO A POINT; THENCE S11°21'29"E, A DISTANCE OF 226.77' TO A POINT; THENCE S37°15'48"E, A DISTANCE OF 54.66' TO A POINT; THENCE S09°24'19"E, A DISTANCE OF 199.52' TO A POINT; THENCE S04°00'18"E, A DISTANCE OF 485.89' TO A POINT; THENCE S13°27'04"E, A DISTANCE OF 113.35' TO A POINT; THENCE N74°26'28"E, A DISTANCE OF 276.22' TO A POINT; THENCE S14°52'54"E, A DISTANCE OF 45.47' TO AN IRON PIPE BEING A MEANDER CORNER ON THE OUTLET OF DELAVAN LAKE; THENCE CONTINUING S14°52'54"E, A DISTANCE OF 20' MORE OR LESS TO THE NORTHERLY SHORELINE OF THE OUTLET OF DELAVAN LAKE; THENCE NORTHEASTERLY WITH THE NORTHERLY SHORELINE OF SAID OUTLET TO A POINT; THENCE N43°37'53"W, A DISTANCE OF 20' MORE OR LESS TO SAID IRON PIPE, SAID IRON PIPE BEING A DISTANCE OF 20' FROM THE PREVIOUS SAID MEANDER CORNER; THENCE N80°05'22"E, A DISTANCE OF 387.03' AND N53°59'50"E, A DISTANCE OF 335.00' FROM THE PREVIOUS SAID MEANDER CORNER; THENCE N43°37'53"W, A DISTANCE OF 1268.71' TO THE POINT OF BEGINNING, SAID PARCEL CONTAINING 16.64 ACRES MORE OR LESS AND INCLUDING ALL LANDS BETWEEN MEANDER CORNERS AND THE SHORELINE OF THE OUTLET OF DELAVAN LAKE.