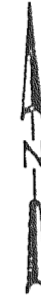
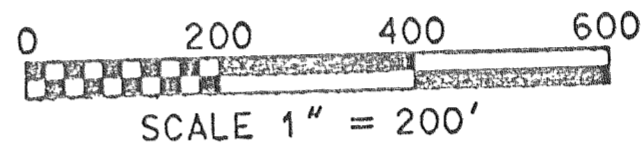


GENEVA LANDINGS ON DELAVAN LAKE CONDOMINIUM

BEING LOCATED IN PART OF THE SW 1/4 AND SE 1/4 OF THE NW 1/4 AND PART OF THE NW 1/4 AND NE 1/4 OF THE SW 1/4 OF SECTION 21, AND PART OF THE NE 1/4 AND SE 1/4 OF THE SE 1/4 OF SECTION 20, TOWN 2 NORTH, RANGE 16 EAST, TOWN OF DELAVAN, WALWORTH COUNTY, WISCONSIN.

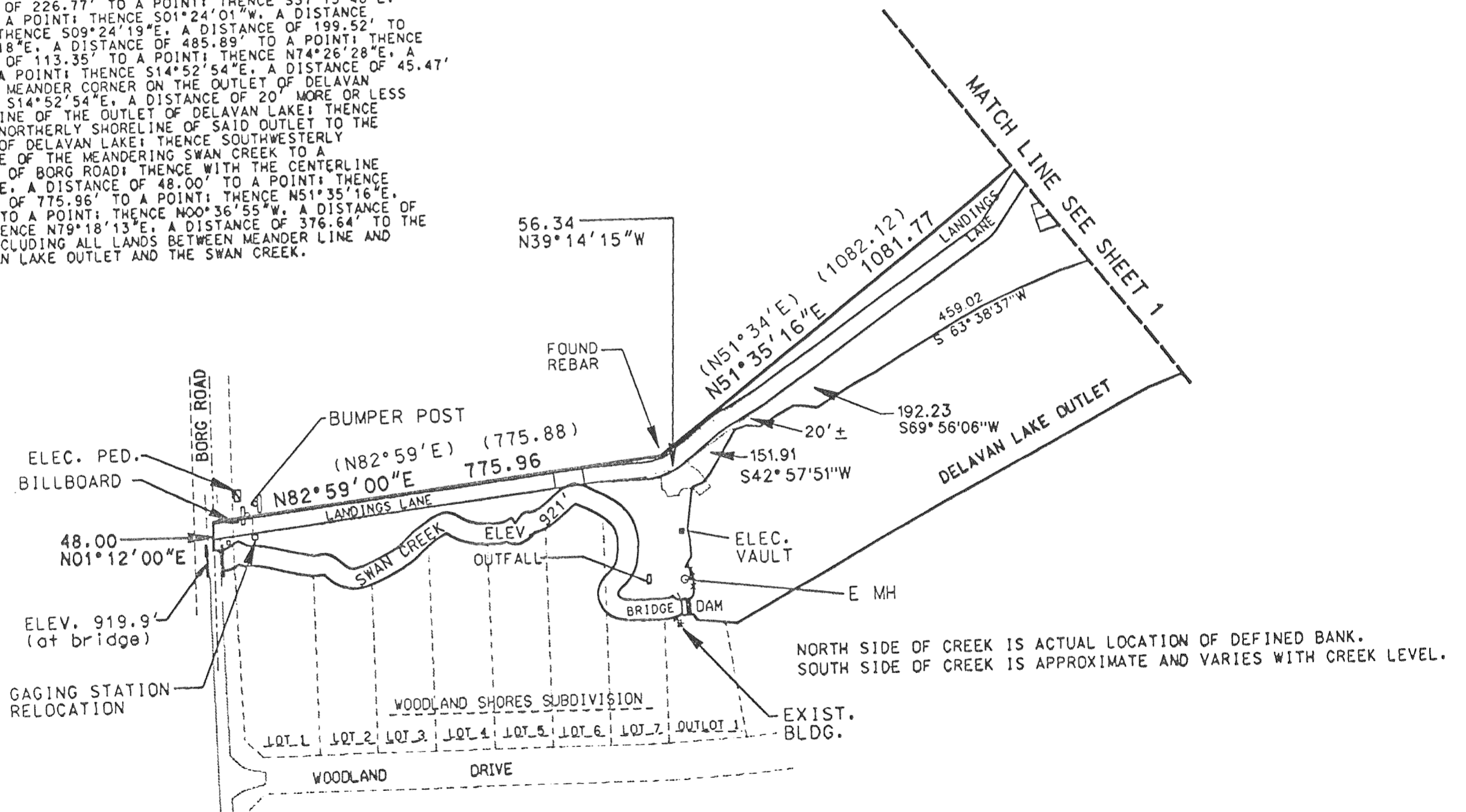
SURVEY OF PROPERTY



LEGAL DESCRIPTION OF CONDOMINIUM

BEING PART OF THE SW 1/4 OF THE NW 1/4 AND NE 1/4 OF THE SW 1/4 OF SECTION 21, AND PART OF THE SE 1/4 AND SW 1/4 OF THE SE 1/4 OF SECTION 20, ALL IN TOWN 2 NORTH, RANGE 16 EAST, TOWN OF DELAVAN, WALWORTH COUNTY, WISCONSIN, AND MORE PARTICULARLY DESCRIBED AS FOLLOWS:

COMMENCING AT THE NW CORNER OF LOT 1 OF CERTIFIED SURVEY MAP #19311; THENCE S79°18'13"W, A DISTANCE OF 226.47' TO THE POINT OF BEGINNING; THENCE FROM THE POINT OF BEGINNING S11°21'29"E, A DISTANCE OF 226.77' TO A POINT; THENCE S37°15'48"E, A DISTANCE OF 54.66' TO A POINT; THENCE S01°24'01"W, A DISTANCE OF 112.35' TO A POINT; THENCE S09°24'19"E, A DISTANCE OF 199.52' TO A POINT; THENCE S04°00'18"E, A DISTANCE OF 485.89' TO A POINT; THENCE S13°27'04"E, A DISTANCE OF 113.35' TO A POINT; THENCE N74°26'28"E, A DISTANCE OF 276.22' TO A POINT; THENCE S14°52'54"E, A DISTANCE OF 45.47' TO AN IRON PIPE BEING A MEANDER CORNER ON THE OUTLET OF DELAVAN LAKE; THENCE CONTINUING S14°52'54"E, A DISTANCE OF 20' MORE OR LESS TO THE NORTHERLY SHORELINE OF THE OUTLET OF DELAVAN LAKE; THENCE SOUTHWESTERLY WITH THE NORTHERLY SHORELINE OF SAID OUTLET TO THE DAM AND THE WEST SHORE OF DELAVAN LAKE; THENCE SOUTHWESTERLY WITH THE NORTHERLY SHORE OF THE MEANDERING SWAN CREEK TO A POINT IN THE CENTERLINE OF BORG ROAD; THENCE WITH THE CENTERLINE OF BORG ROAD N01°12'00"E, A DISTANCE OF 48.00' TO A POINT; THENCE N82°59'00"E, A DISTANCE OF 775.96' TO A POINT; THENCE N51°35'16"E, A DISTANCE OF 1081.77' TO A POINT; THENCE N00°36'55"W, A DISTANCE OF 1058.24' TO A POINT; THENCE N79°18'13"E, A DISTANCE OF 376.64' TO THE POINT OF BEGINNING, INCLUDING ALL LANDS BETWEEN MEANDER LINE AND THE SHORELINE OF DELAVAN LAKE OUTLET AND THE SWAN CREEK.



REVISIONS :