

SUMMIT MEADOWS SUBDIVISION

LANDS LOCATED IN PART OF
ALL 1/4'S OF THE NW 1/4
SECTION 31, TOWN 2 NORTH, RANGE 16 EAST
WALWORTH COUNTY, WISCONSIN

SW CORNER
31-2-16

NE CORNER
31-2-16

SE CORNER
31-2-16

SW CORNER
31-2-16

NE CORNER
31-2-16

SE CORNER
31-2-16

SW CORNER
31-2-16

NE CORNER
31-2-16

SE CORNER
31-2-16

SW CORNER
31-2-16

NE CORNER
31-2-16

SE CORNER
31-2-16

SW CORNER
31-2-16

NE CORNER
31-2-16

SE CORNER
31-2-16

SW CORNER
31-2-16

NE CORNER
31-2-16

SE CORNER
31-2-16

SW CORNER
31-2-16

NE CORNER
31-2-16

SE CORNER
31-2-16

SW CORNER
31-2-16

NE CORNER
31-2-16

SE CORNER
31-2-16

SW CORNER
31-2-16

NE CORNER
31-2-16

SE CORNER
31-2-16

SW CORNER
31-2-16

NE CORNER
31-2-16

SE CORNER
31-2-16

SW CORNER
31-2-16

NE CORNER
31-2-16

SE CORNER
31-2-16

SW CORNER
31-2-16

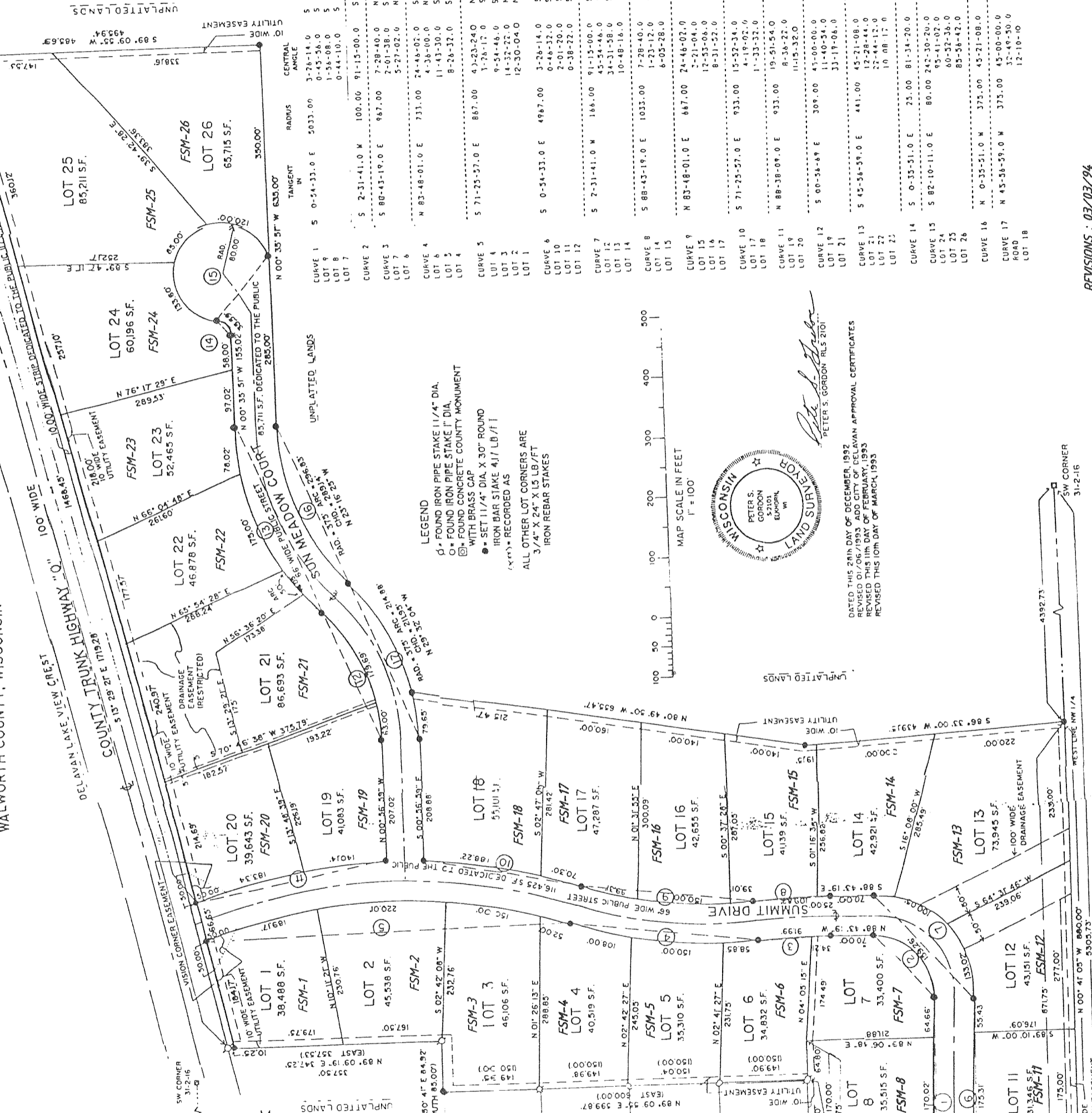
NE CORNER
31-2-16

SE CORNER
31-2-16

SW CORNER
31-2-16

NE CORNER
31-2-16

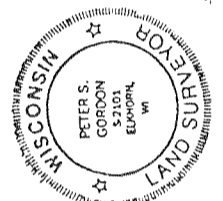
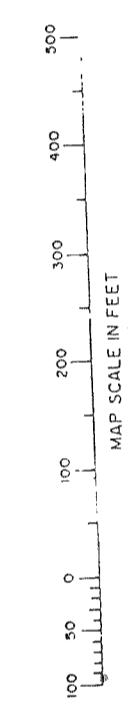
SE CORNER
31-2-16



NOTES:
DIMENSION SHOWN ON CURVED LINES
ON THIS SHEET IS THE ARC LENGTH
LOTS 1, 20, 21, 22, 23, 24, 25
NO DIRECT ACCESS TO C.T.H. "O"
LOTS 9 & 10
NO DIRECT ACCESS TO SWEET ROAD
LOTS 1 & 20
DRIVEWAYS TO BE MINIMUM DISTANCE
OF 125' FROM C.T.H. "O"

CURVE	BEARING	DISTANCE	ARC	TANGENT
CURVE 1	S 0-54-33.0 E	5033.00	301.93	S 2-31-41.0 W
LOT 1				
LOT 2				
LOT 3				
LOT 4				
LOT 5				
LOT 6				
LOT 7				
LOT 8				
LOT 9				
LOT 10				
LOT 11				
LOT 12				
LOT 13				
LOT 14				
LOT 15				
LOT 16				
LOT 17				
LOT 18				
LOT 19				
LOT 20				
LOT 21				
LOT 22				
LOT 23				
LOT 24				
LOT 25				
LOT 26				

LEGEND
 (1) FOUND IRON PIPE STAKE 1 1/4" DIA.
 (2) FOUND IRON PIPE STAKE 1" DIA.
 (3) FOUND CONCRETE COUNTY MONUMENT
 WITH BRASS CAP
 (4) SET 1 1/4" DIA. X 30" ROUND
 IRON BAR STAKE 4 1/2 LB./FT.
 (5) RECORDED AS
 ALL OTHER LOT CORNERS ARE
 3/4" X 24" X 1/2 LB./FT.
 IRON REBAR STAKES



DATED THIS 28TH DAY OF DECEMBER, 1992
 BY PETER S. GORDON, SURVEYOR
 REVISIONS THIS 10TH DAY OF FEBRUARY, 1993
 REVISIONS THIS 10TH DAY OF MARCH, 1993

REVISIONS : 03/03/94