

OAK MEADOW SUBDIVISION

LOCATED IN THE NE 1/4 OF SECTION 29

T2N-R16E, TOWN OF DELAVAN

WALWORTH COUNTY, WISCONSIN

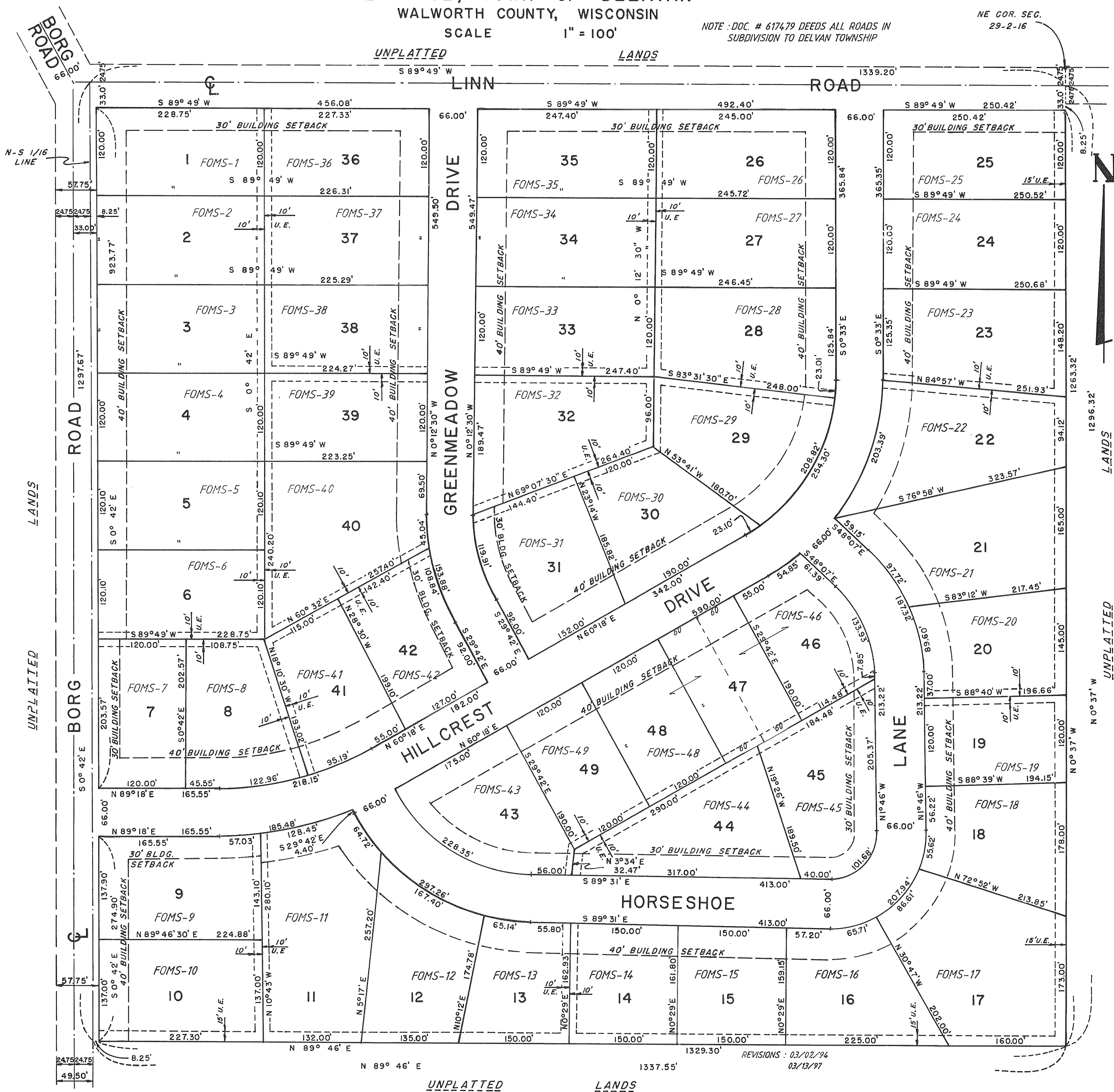
SCALE 1" = 100'

NOTE: DOC. # 617479 DEEDS ALL ROADS IN SUBDIVISION TO DELVAN TOWNSHIP

NE COR. SEC. 29-2-16

UNPLATTED

LANDS



REVISIONS: 03/02/94
03/13/97

UNPLATTED

LANDS