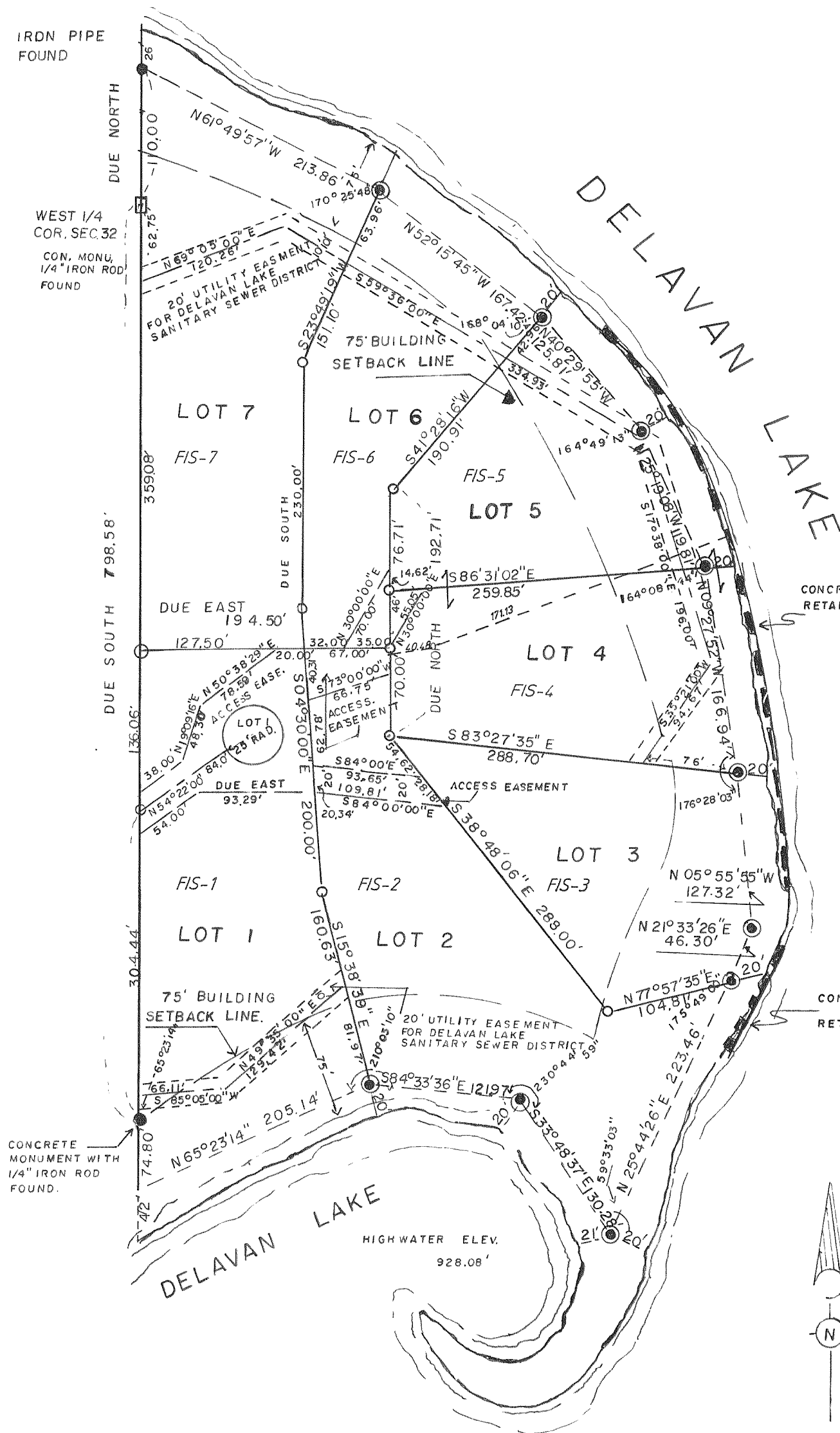
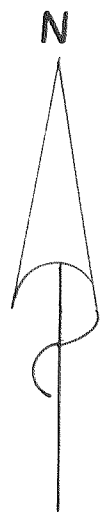


THE ISLAND OF LAKE DELAVAN

LOCATED IN GOVERNMENT LOT 4, OF THE SW-1/4 OF THE NW-1/4, AND THE NW-1/4 OF THE SW-1/4, OF SECTION 32, T.2N., R.16E., TOWN OF DELAVAN, WALWORTH COUNTY, WISCONSIN.

REVISIONS : 02/17/94

05/11/98

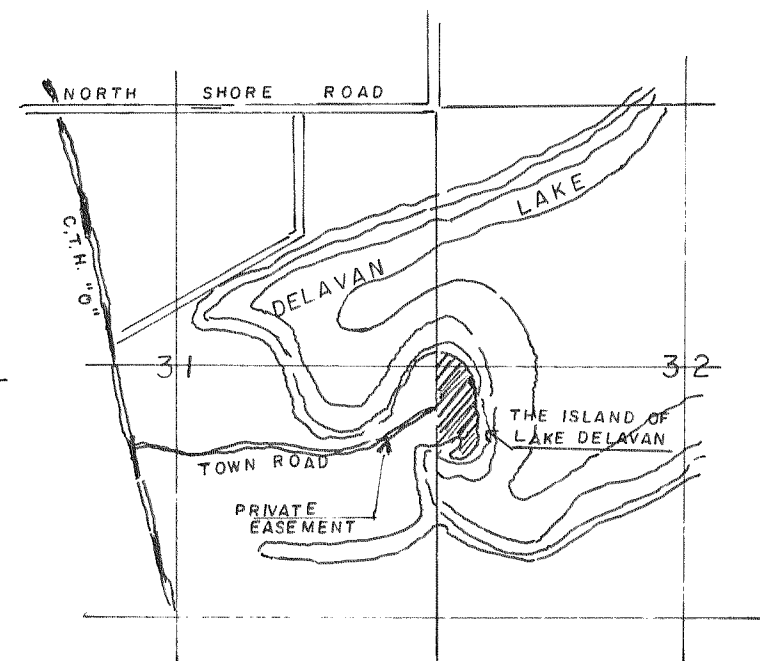


SCALE 1" = 100'

LEGEND

- 2-1/2" x 30" IRON PIPE, WEIGHTING 3.65 LBS/LINEAL FOOT,
- 1-1/2" x 24" IRON PIPE, WEIGHTING 1.13
- MONUMENT FOUND
- EASEMENT
- BUILDING SETBACK LINE

LOCATION SKETCH



SECTION 32, T.2N., R.16E.
TOWN OF DELAVAN

SCALE 1" = 2000'