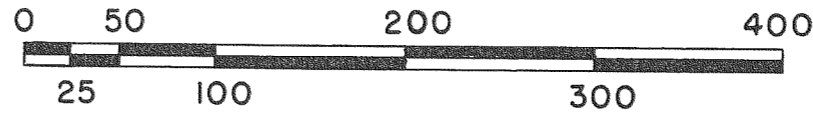
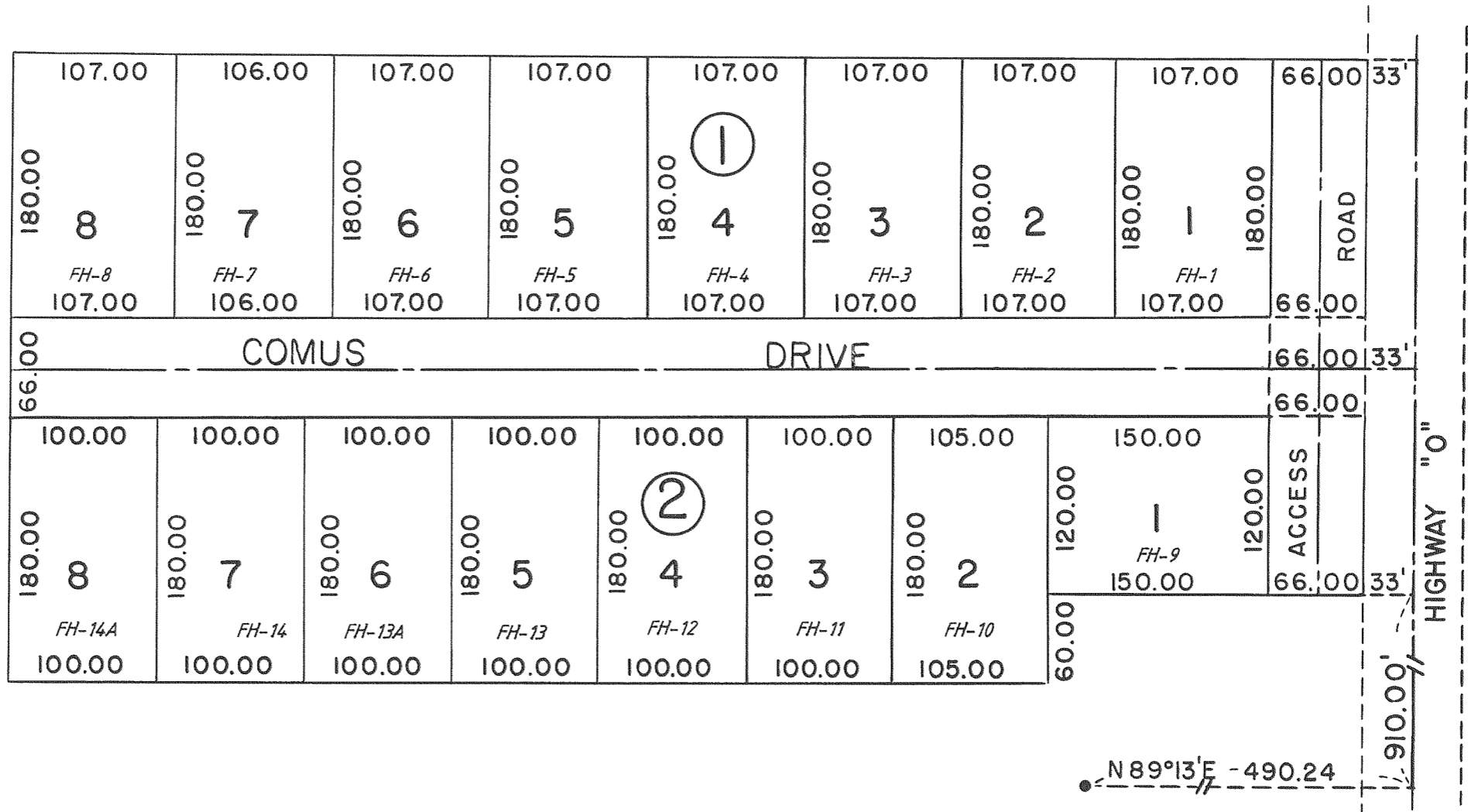


HANSEN'S SUBDIVISION

LOCATED IN THE S/W 1/4 OF THE S/E 1/4 AND THE S/E 1/4
OF THE S/W 1/4 OF SECTION 8, T2N, R16E, WALWORTH COUNTY
WISCONSIN



SCALE 1"=100'



SOUTH 1/4 CORNER, SECTION 8, T2N, R16E
WALWORTH COUNTY

REVISIONS : 02/15/94

