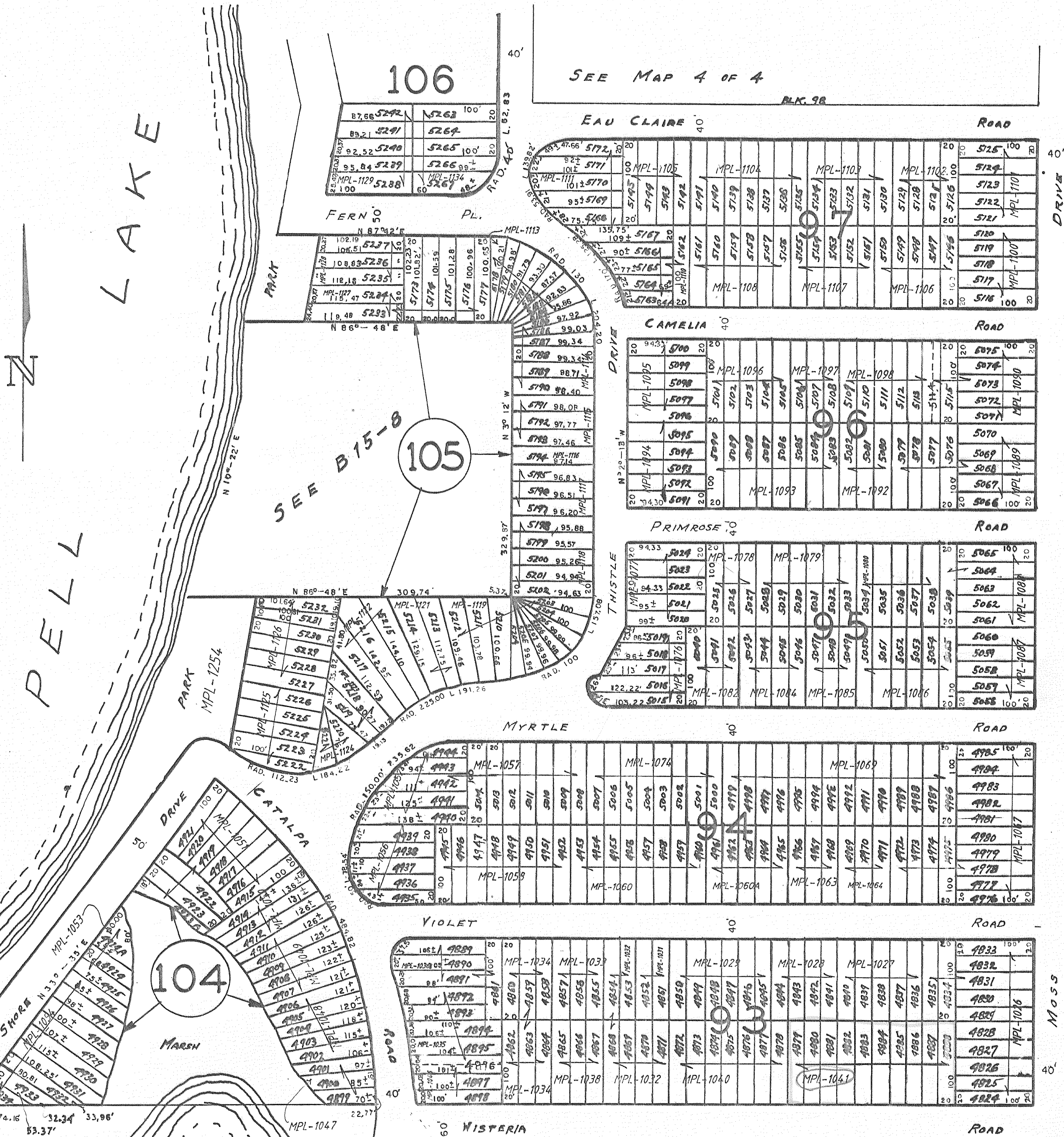


SEC. 3 PELL LAKE

BLOCKS - 93 TO 97 INCL. - 104 - 105 & PART OF 106
SEC. 15 - T1N - R18E - BLOOMFIELD



REVISIONS : 12/13/94 02/09/99
 04/24/95 02/02/99
 10/25/95 04/29/99
 12/15/95 05/05/00
 01/23/96

BLK. 98
 DRIVE
 BLK. 89
 OF 4
 BLK. 90
 SEE MAP 1
 BLK. 91
 MOSS
 BLK. 92