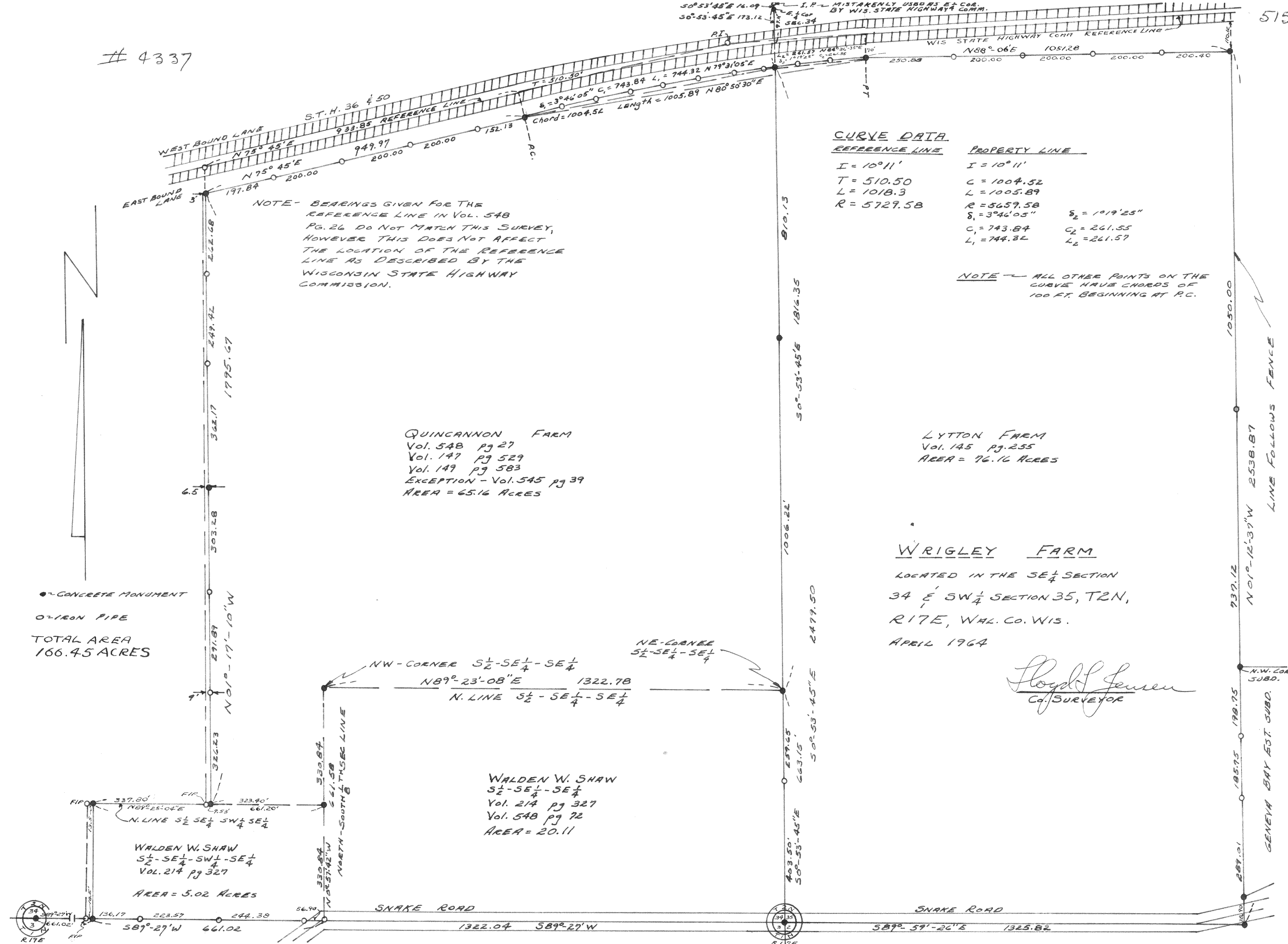


# 4337



NOTE - BEARINGS GIVEN FOR THE REFERENCE LINE IN VOL. 548 PG. 26 DO NOT MATCH THIS SURVEY, HOWEVER THIS DOES NOT AFFECT THE LOCATION OF THE REFERENCE LINE AS DESCRIBED BY THE WISCONSIN STATE HIGHWAY COMMISSION.

CURVE DATA

REFERENCE LINE	PROPERTY LINE
I = 10° 11'	I = 10° 11'
T = 510.50	C = 1004.52
L = 1018.3	L = 1005.89
R = 5729.58	R = 5659.58
	δ <sub>1</sub> = 3° 46' 05"
	δ <sub>2</sub> = 1° 19' 25"
	C <sub>1</sub> = 743.84
	C <sub>2</sub> = 261.55
	L <sub>1</sub> = 744.32
	L <sub>2</sub> = 261.57

NOTE - ALL OTHER POINTS ON THE CURVE HAVE CHORDS OF 100 FT. BEGINNING AT P.C.

QUINCANNON FARM  
 Vol. 548 pg 27  
 Vol. 147 pg 529  
 Vol. 149 pg 583  
 EXCEPTION - Vol. 545 pg 39  
 AREA = 65.16 ACRES

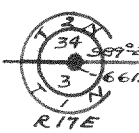
LYTTON FARM  
 Vol. 145 pg. 255  
 AREA = 76.16 ACRES

WRIGLEY FARM  
 LOCATED IN THE SE 1/4 SECTION  
 34 E SW 1/4 SECTION 35, T2N,  
 R17E, WAH. CO. WIS.  
 APRIL 1964

WALDEN W. SHAW  
 SE 1/4 - SE 1/4 - SE 1/4  
 Vol. 214 pg 327  
 Vol. 548 pg 72  
 AREA = 20.11

WALDEN W. SHAW  
 SW 1/4 - SE 1/4 - SW 1/4 - SE 1/4  
 Vol. 214 pg 327  
 AREA = 5.02 ACRES

● CONCRETE MONUMENT  
 ○ IRON PIPE  
 TOTAL AREA  
 166.45 ACRES



N.W. COR. SUBD.

GENEVA BAY EST. SUBD.

LINE FOLLOWS FENCE

SNAKE ROAD

SNAKE ROAD