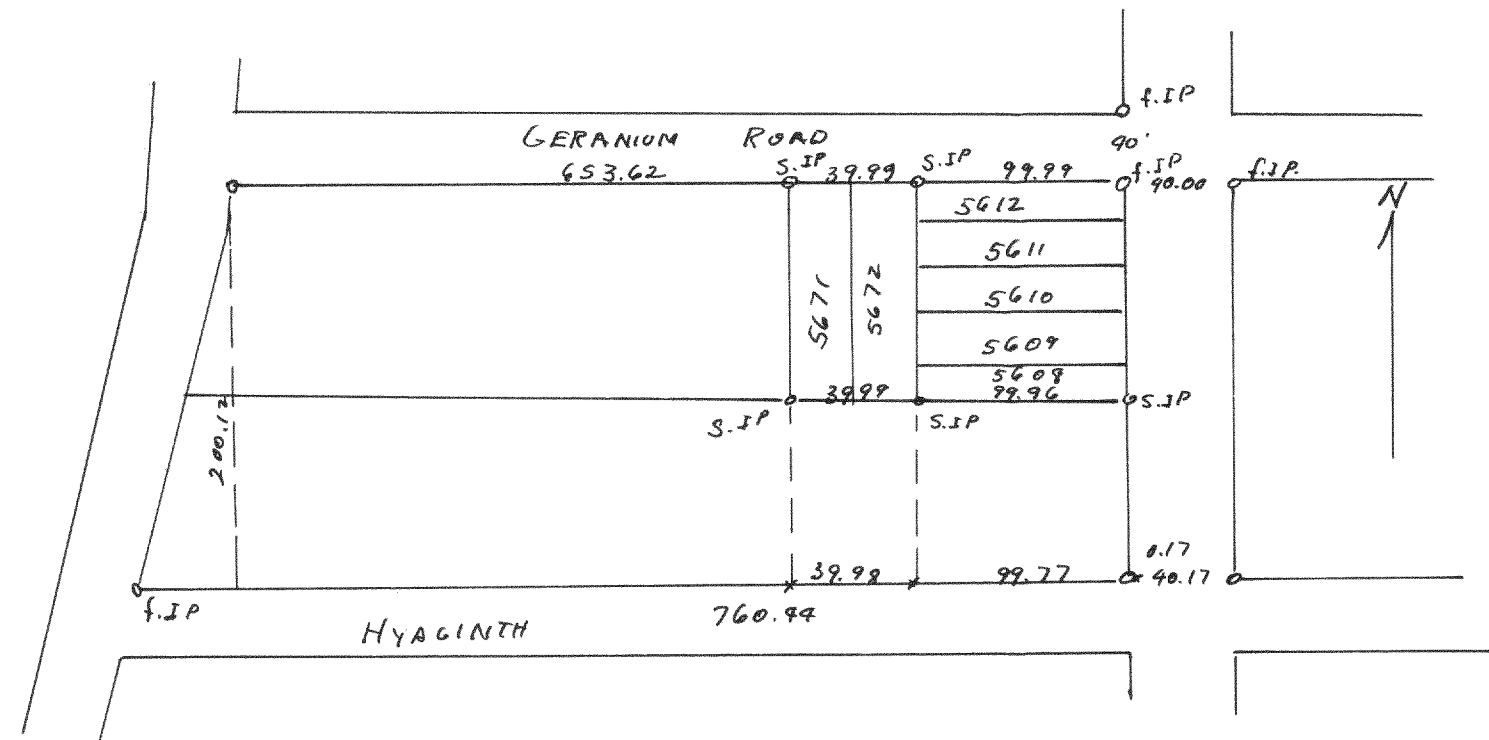
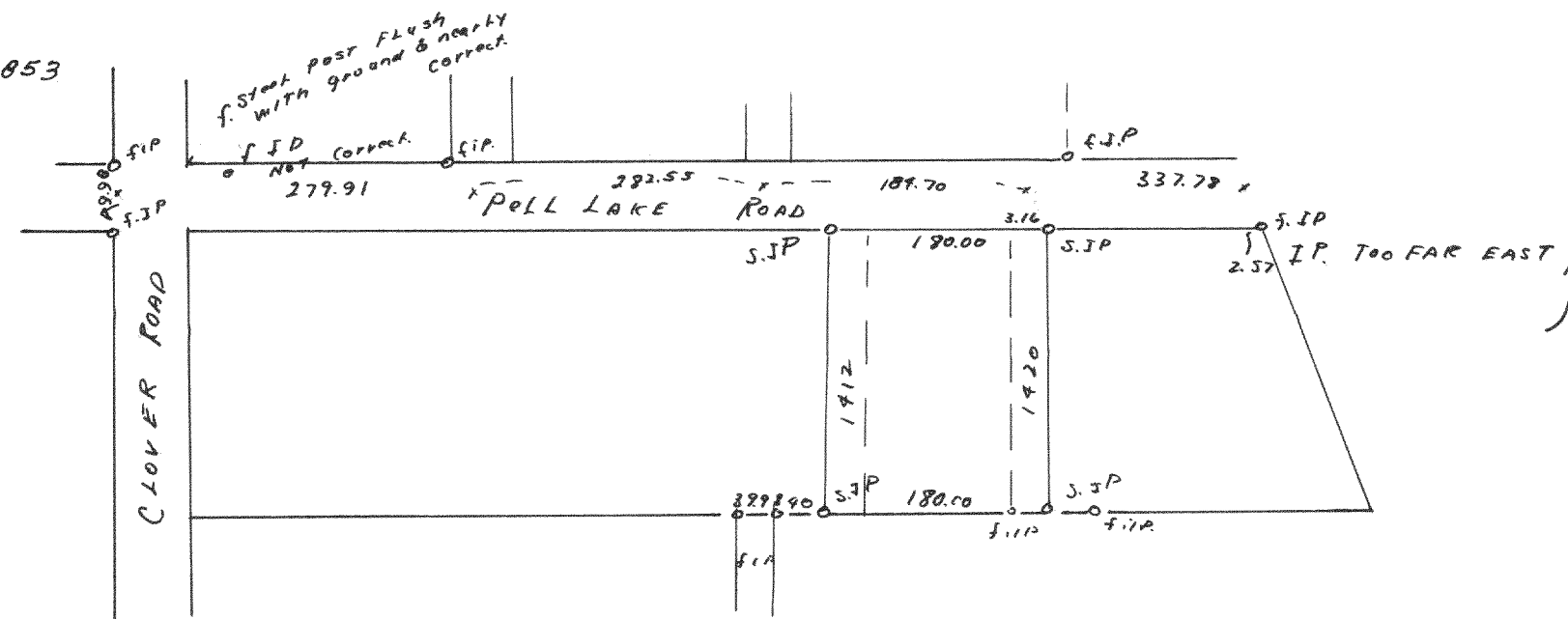


# 1852



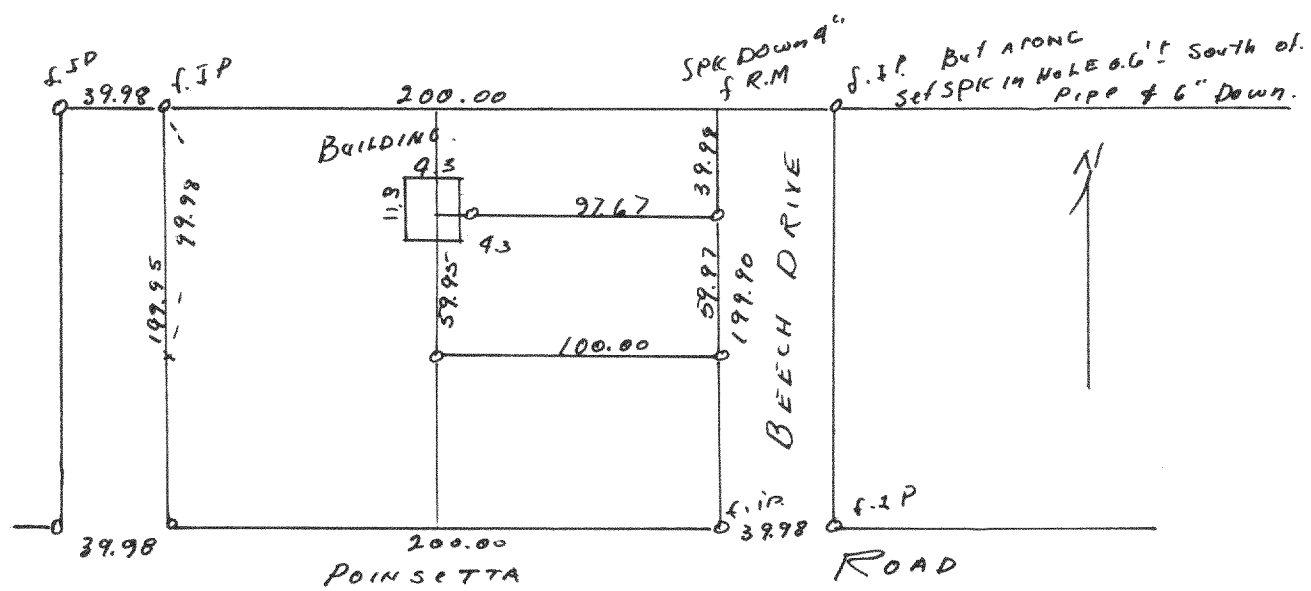
Plot of survey of lots 5608-5612 & 5671-5672 of Section 3  
 Pell Lake Subdivision in T1N18E Walworth County  
 Nov 6, 1948  
 Lloyd L Jensen  
 County Surveyor.  
 c.s.

# 1853



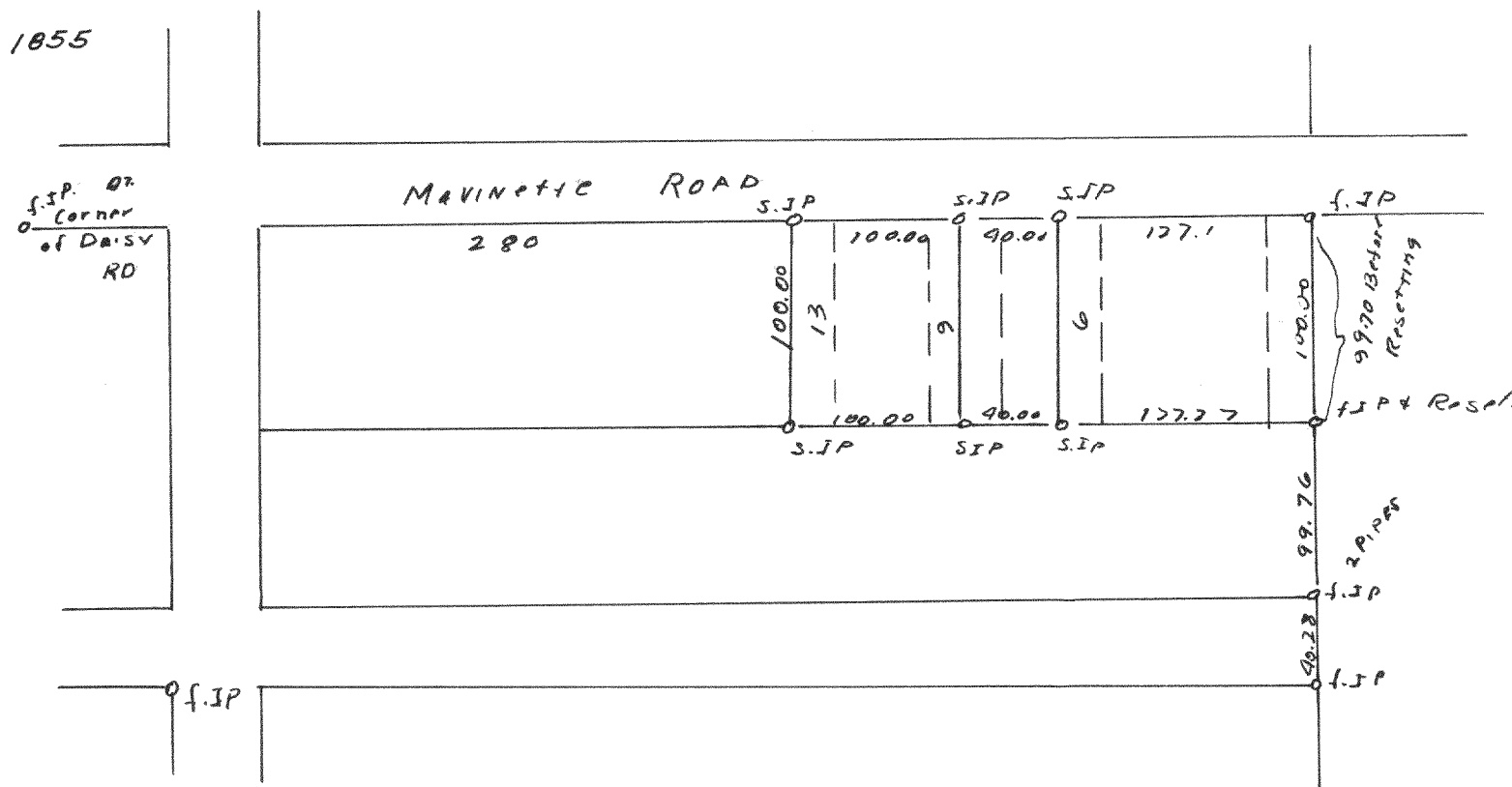
Plot of survey of lots 1412-1420 Section 1 of Pell Lake Subdivision  
 in T1N18E Walworth County  
 Nov 13, 1948  
 Lloyd L Jensen  
 County Surveyor.  
 c.s.

# 1854



Plot of survey of lots 9322-9324 of Section 5 of Pell Lake  
 Subdivision in T1N18E Walworth County.  
 Nov 15, 1948  
 Lloyd L Jensen  
 County Surveyor  
 c.s.

# 1855



Plot of survey of lots 1-6, 9-13 of Pell Lake subdivision located  
 in Section 15 T1N18E Walworth County  
 Nov 15, 1948  
 Lloyd L Jensen  
 County Surveyor  
 c.s.