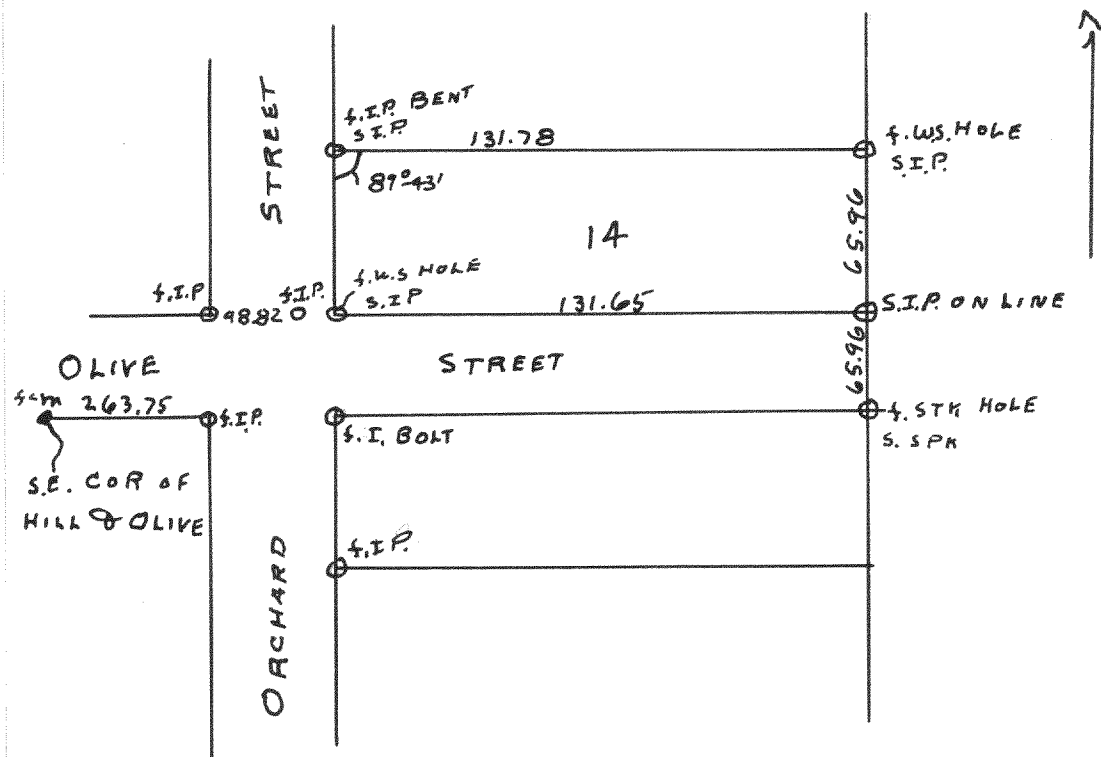
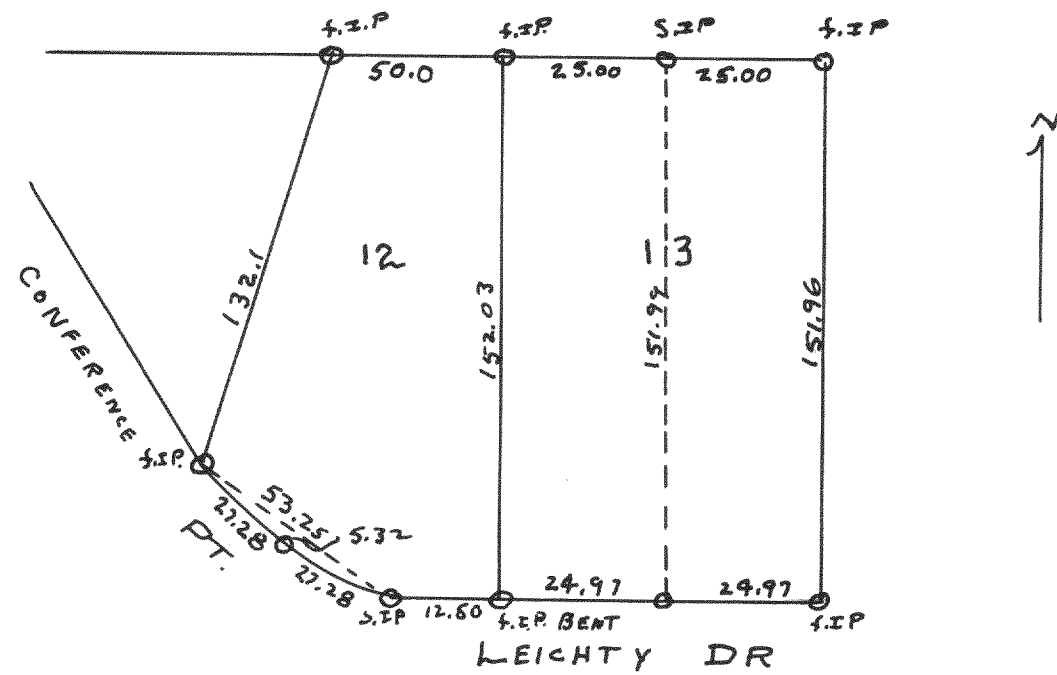


2155



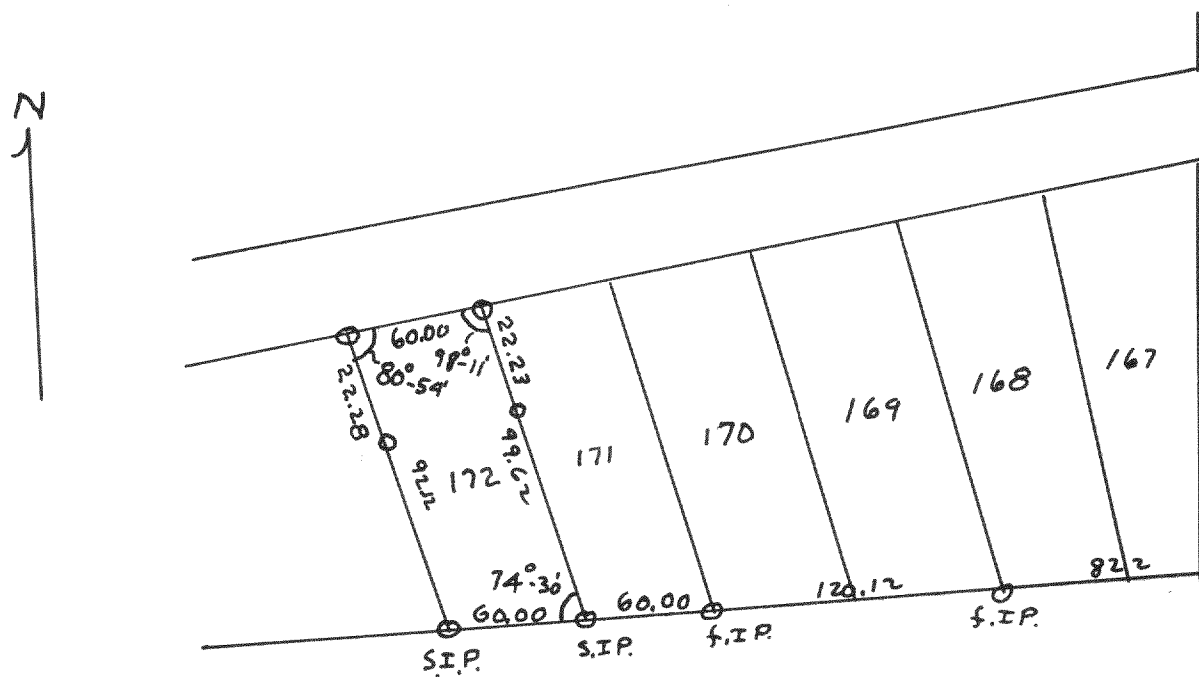
Plot of survey of lot 14 Fockwoods 2nd Addition
 Village of Williams Bay, Walworth County
 June 8, 1949
 Lloyd E Jensen *SD*
 County Surveyor

2156



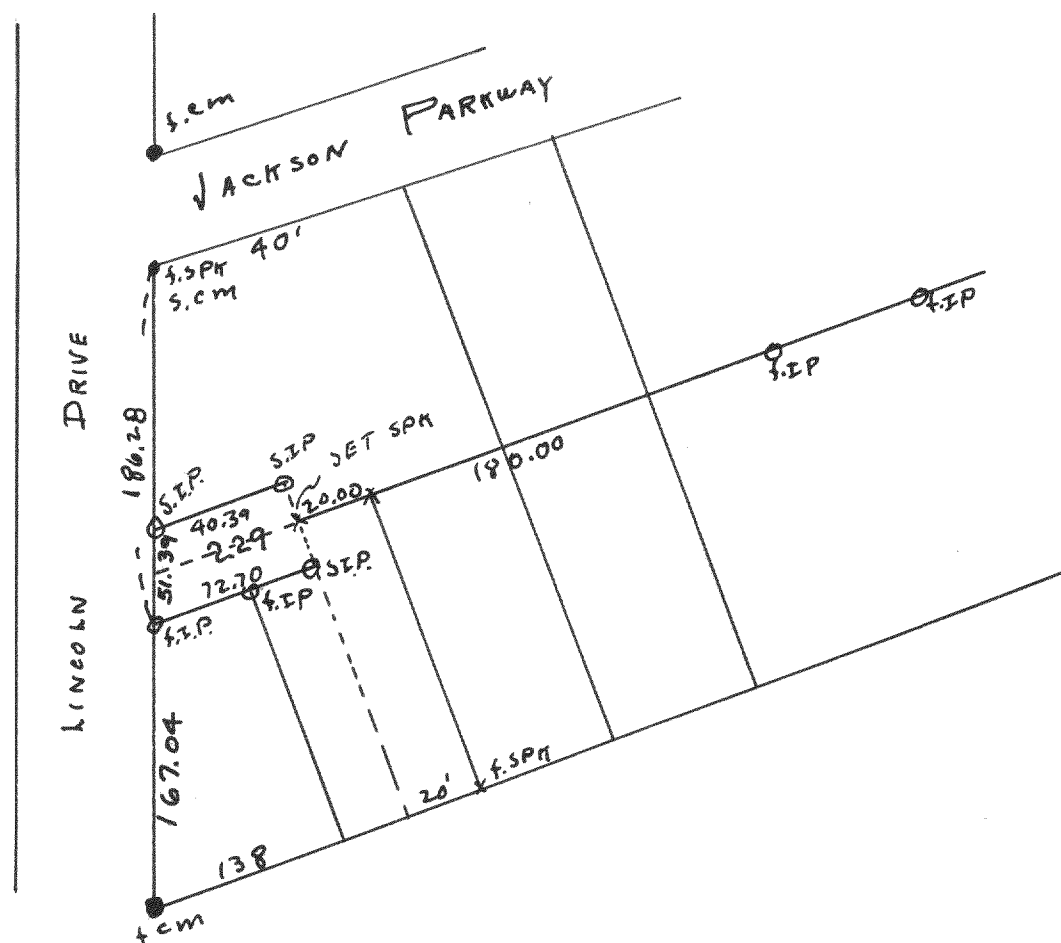
Plot of survey of lots 12 & the west 1/2 of lot 13 Summer Haven
 Subdivision located in the Village of Williams Bay, Walworth County
 1949
 Lloyd E Jensen *SD*
 County Surveyor

2157



Plot of survey of lot 172 2nd Addition to Cedar Point Park Subdivision
 Village of Williams Bay, Walworth County
 1949
 Lloyd E Jensen *SD*
 County Surveyor

2158



Plot of survey of lot 229 Original Subdivision of Cedar
 Point Park Subdivision Village of Williams Bay, Walworth County
 July 27, 1949
 Lloyd E Jensen *SD*
 County Surveyor