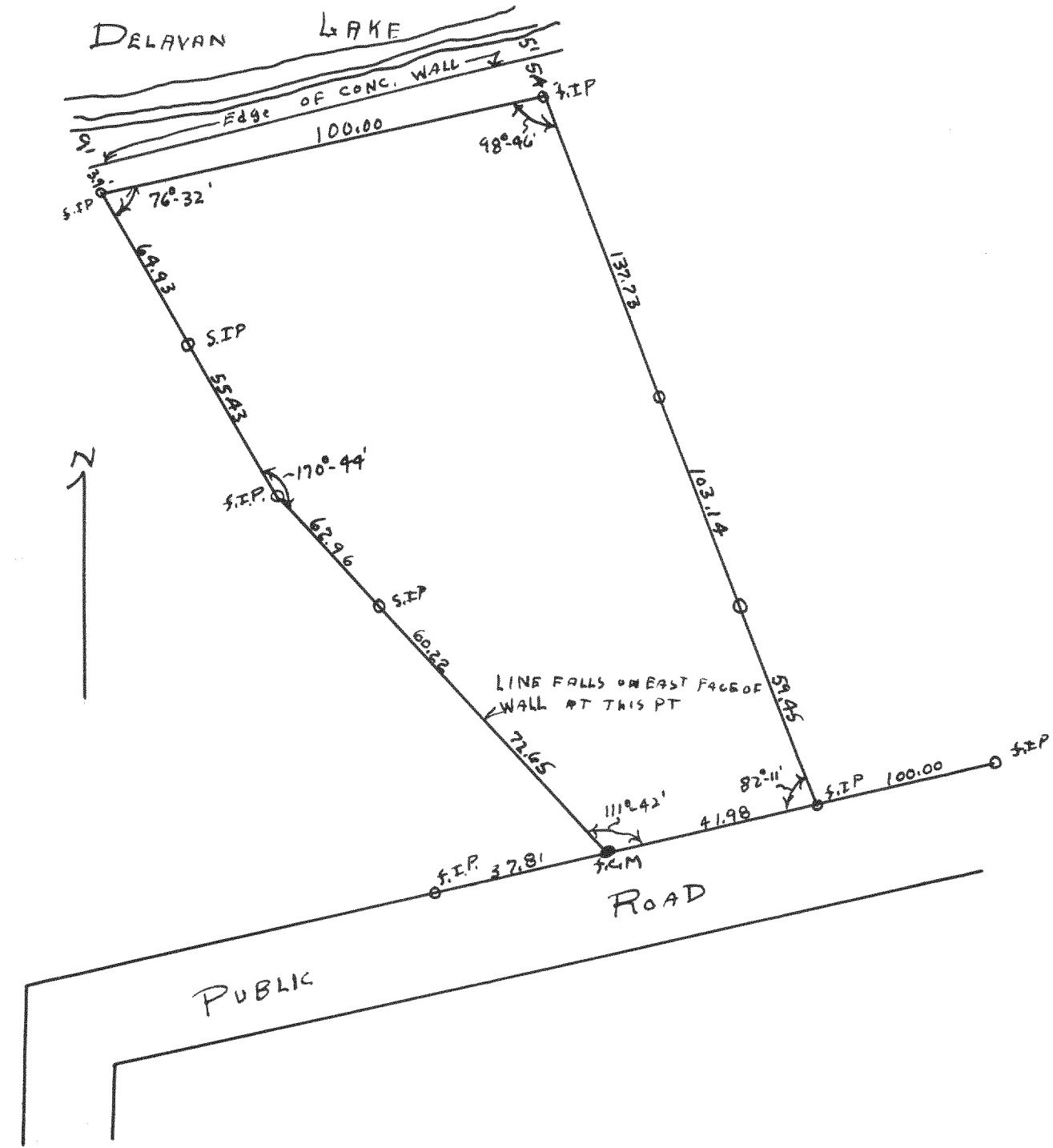


# 1723

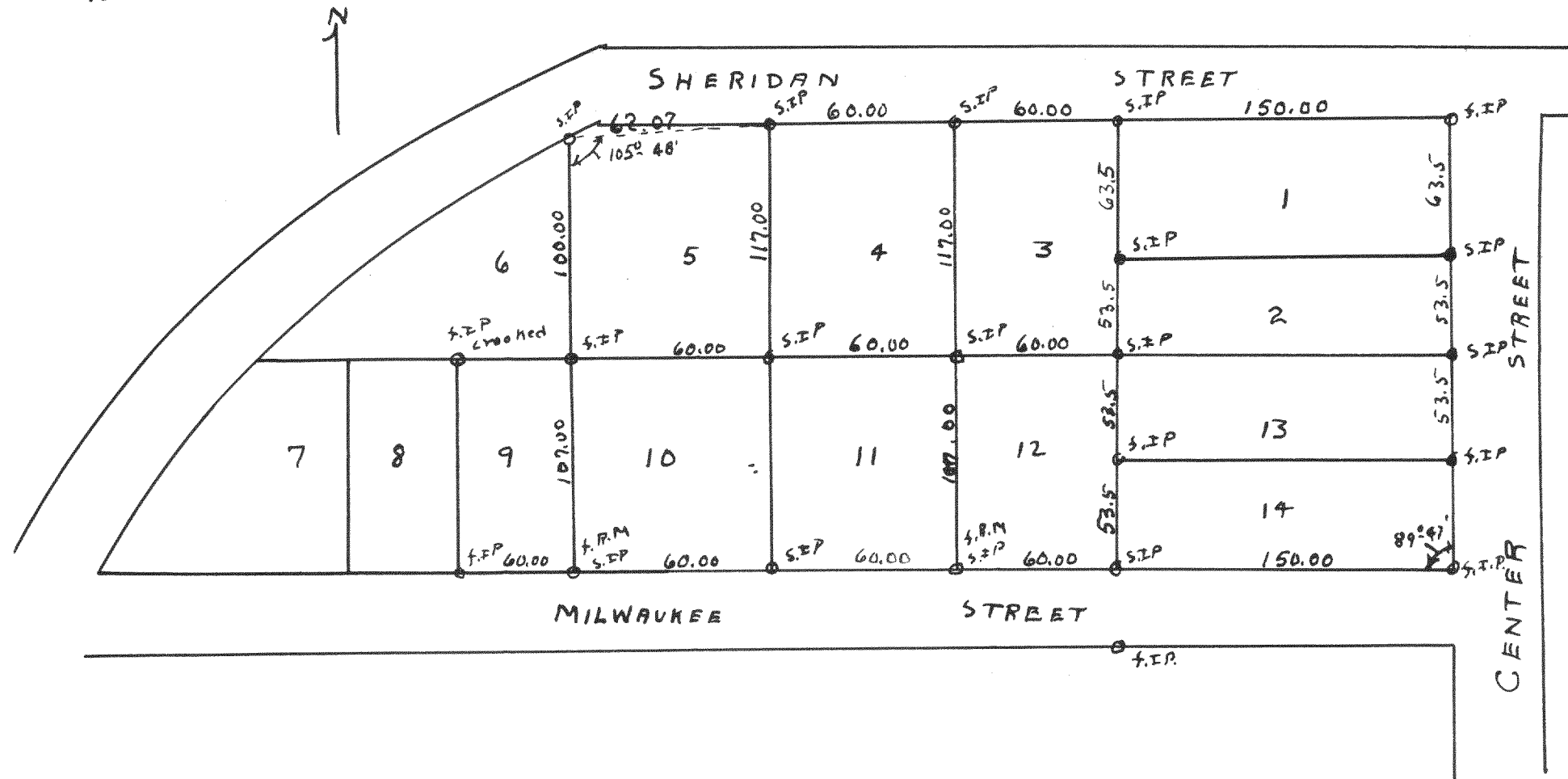


Plat of survey of parts of Lots 1 and 2 of Plat of  
Sans Souci, section 27-T2N-R16E of  
Walworth County, Wisconsin

NOV 1947

Floyd E Jensen  
County Surveyor  
*FJD*

# 1724



Plat of survey of lots 1-9, 10-14 in Markham's subdivision  
in city of Lake Geneva, Walworth County, Wisconsin

December 5, 1947

Floyd E Jensen  
County Surveyor  
*FJD*