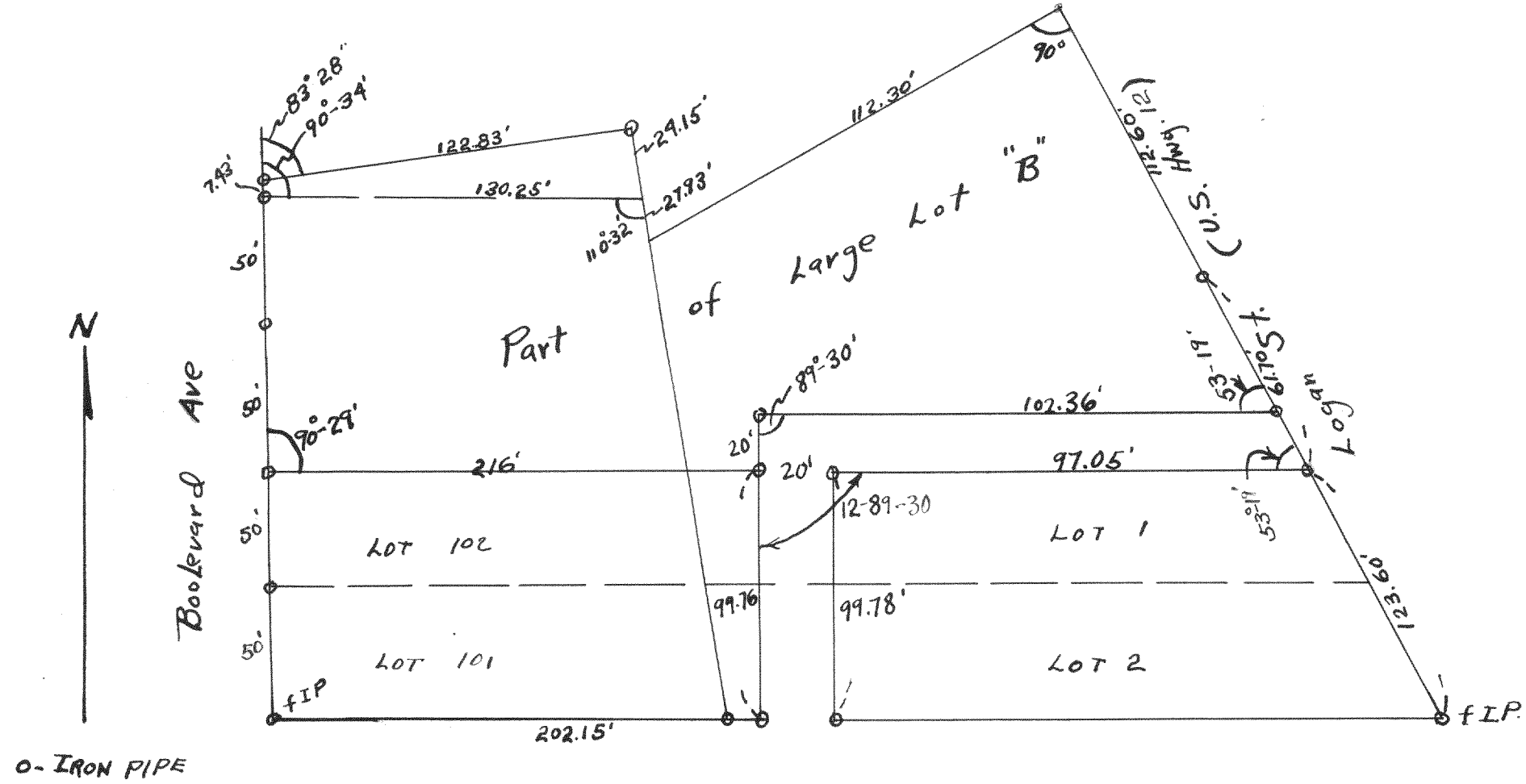
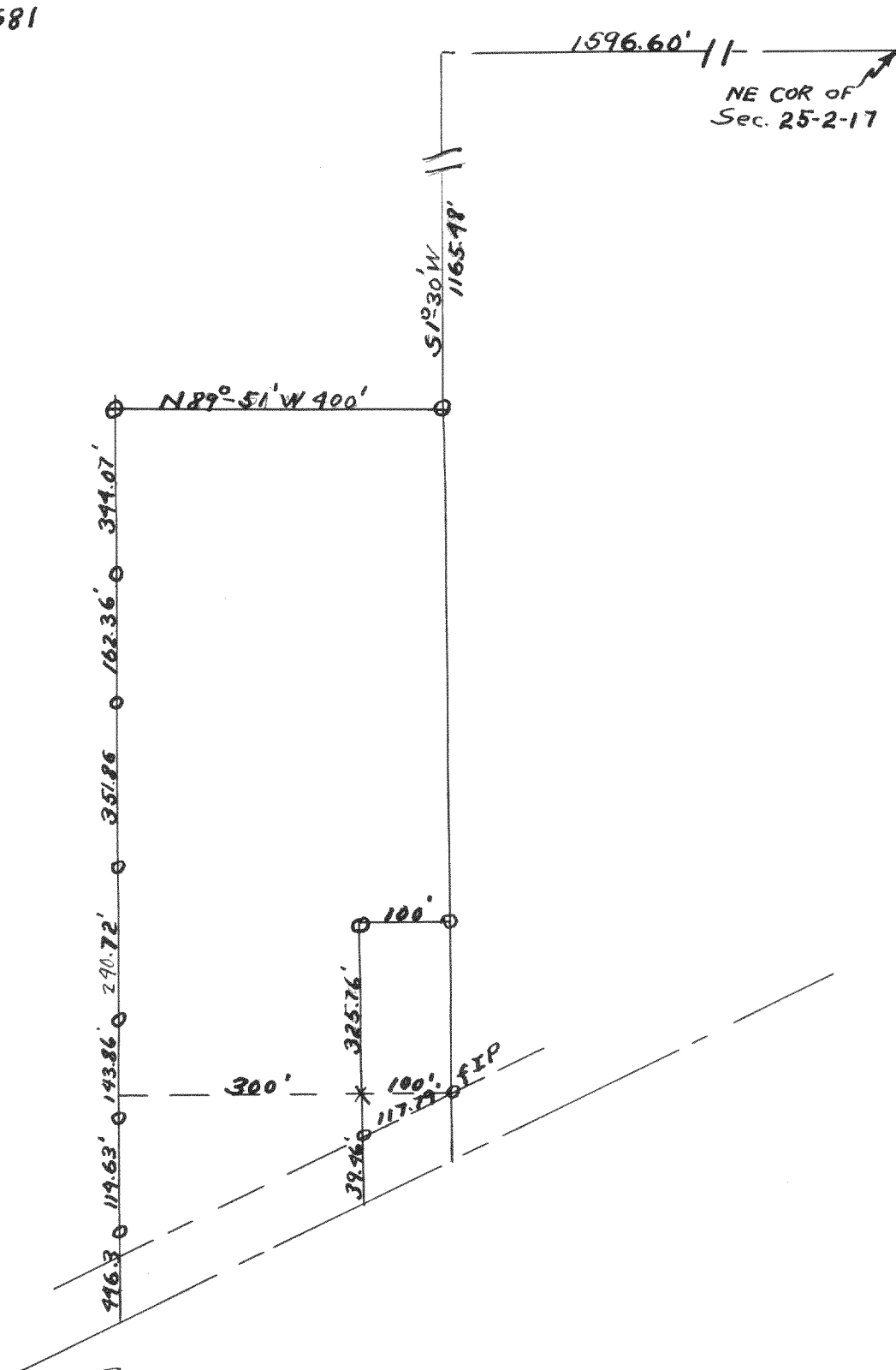


#1680



Plat of survey of lots 1, 2, 101, 102 and part of large lot B of Boulevard Subd. located in the city of Lake Geneva, Wal Co, Wis.
 May 1946 Lloyd L. Jensen
 Co. Sur.

#1681



Plat of a survey of land located in the N.E. 1/4 of Section 25, T2N R17E, City of Lake Geneva Wal. Co. Wis. June 1946
Lloyd L. Jensen
 Co. Sur