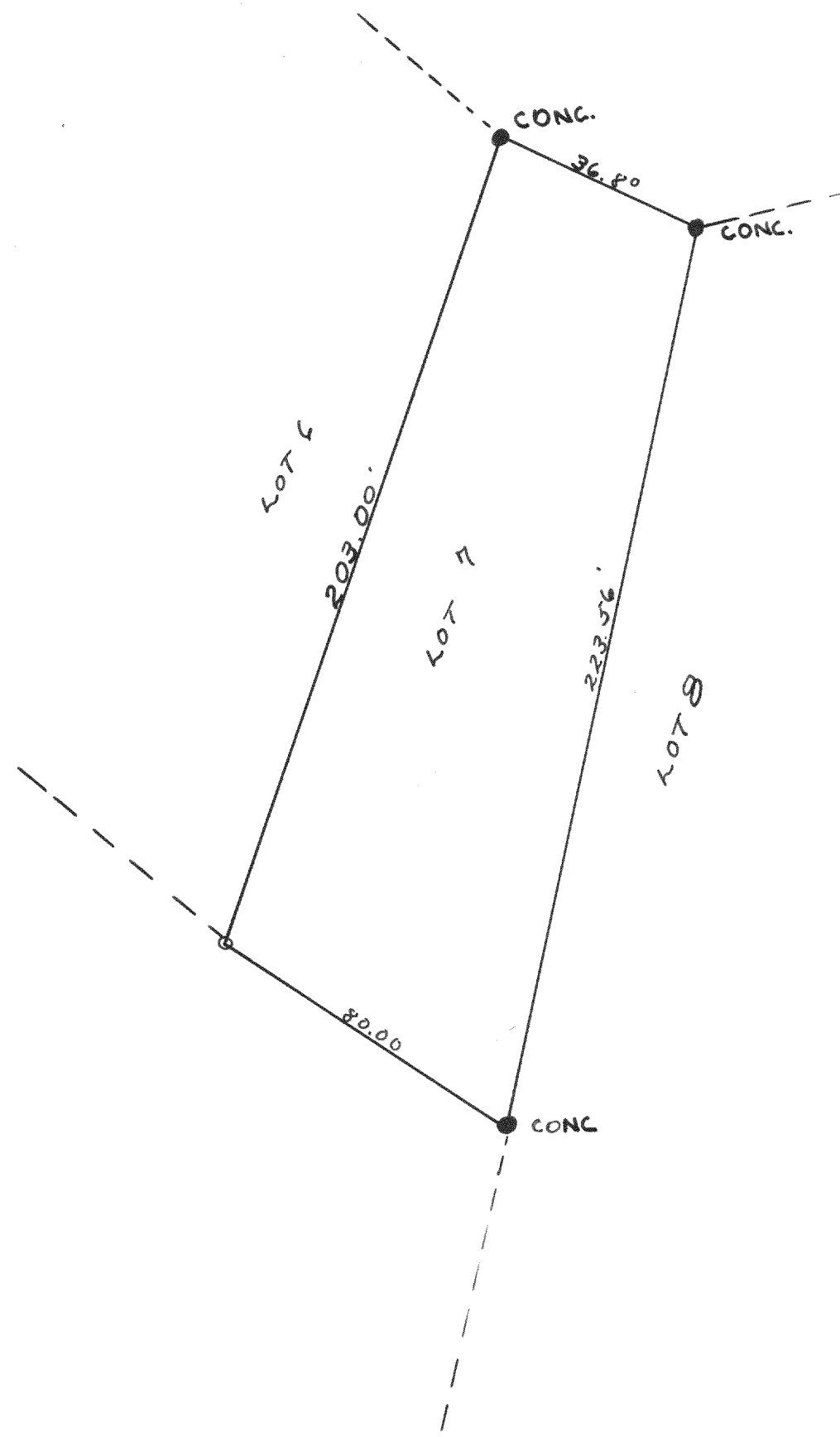


NO. 890

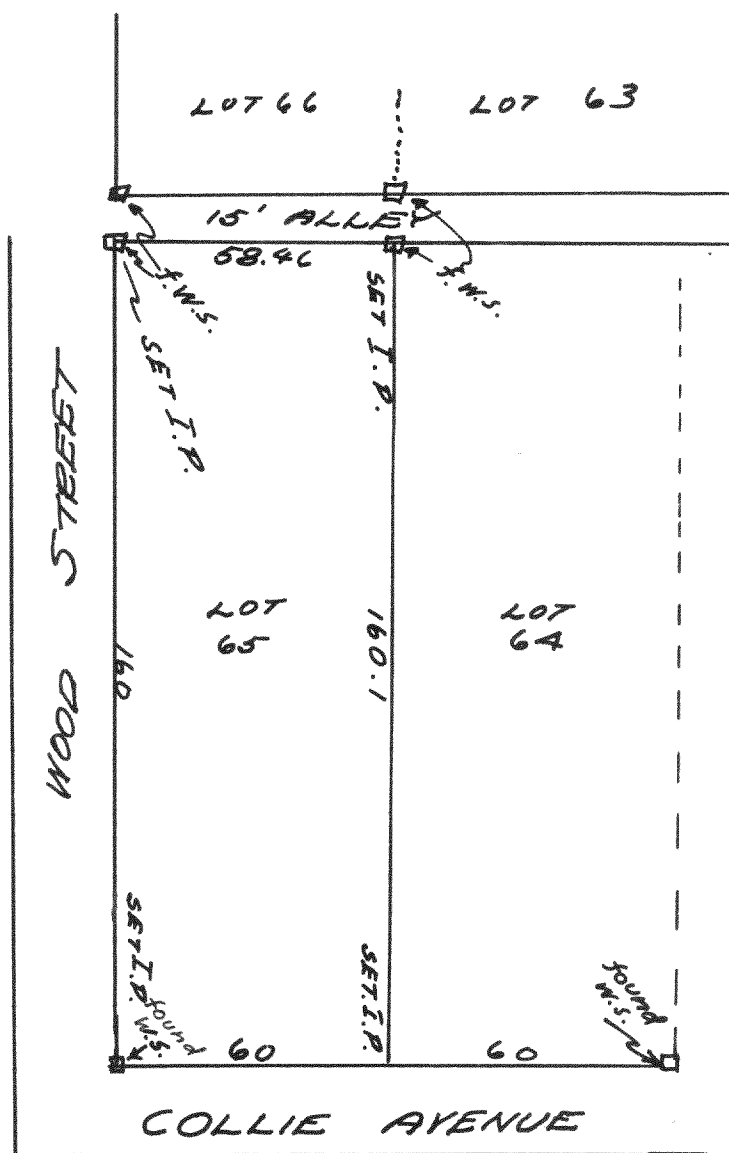


Survey of lot 7 of the 1st Add. to Cedar Mt. Park.

8-17-38

Lloyd L. Jensen
of N.E.J.

NO. 891

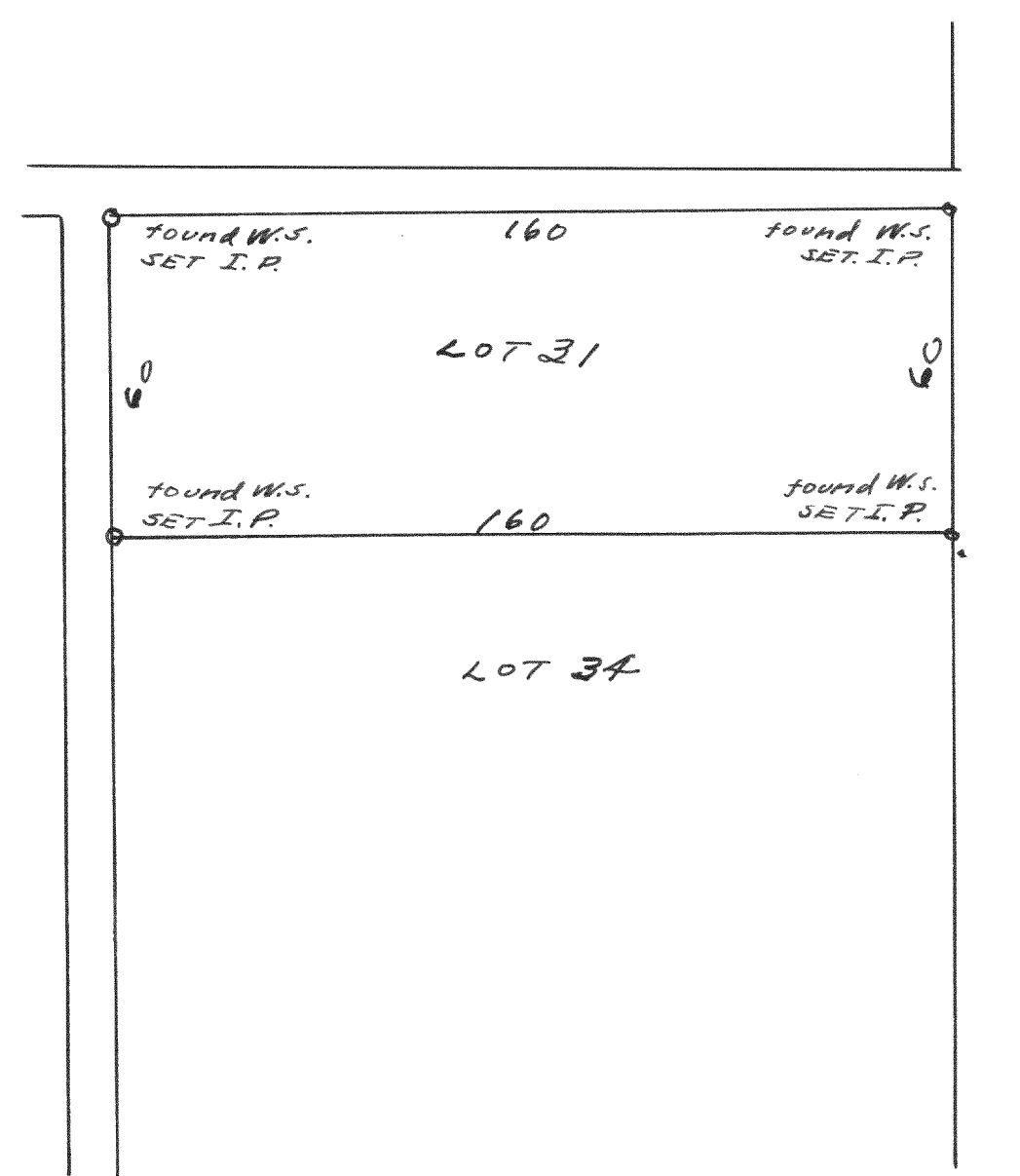


Survey of lot 65 of Bayview subdivision in the Village of Williams Bay.

Aug. 1938

Lloyd L. Jensen
of N.E.J.

NO. 892 -



Survey of lot 31 of Bayview subdivision of the village of Williams Bay.

Mar. 23, 1938

Lloyd L. Jensen
by N.E.J.